

# 156B177



E. 4177000  
E. 6450810

159B177

E. 4179000  
E. 6451810

E. 4179000  
E. 6452810

E. 4180000  
E. 6453810

159B177

E. 4181000  
E. 6454810

N 4,159,000  
N 1,869,181

N 4,158,000  
N 1,868,181

N 4,157,000  
N 1,867,181

N 4,156,000  
N 1,866,181

N 4,155,000  
N 1,865,181

156B173

156B173

E. 4177000  
E. 6450810

153B177

E. 4179000  
E. 6451810

E. 4179000  
E. 6452810

E. 4180000  
E. 6453810

153B177

E. 4181000  
E. 6454810

N 4,159,000  
N 1,869,181

N 4,158,000  
N 1,868,181

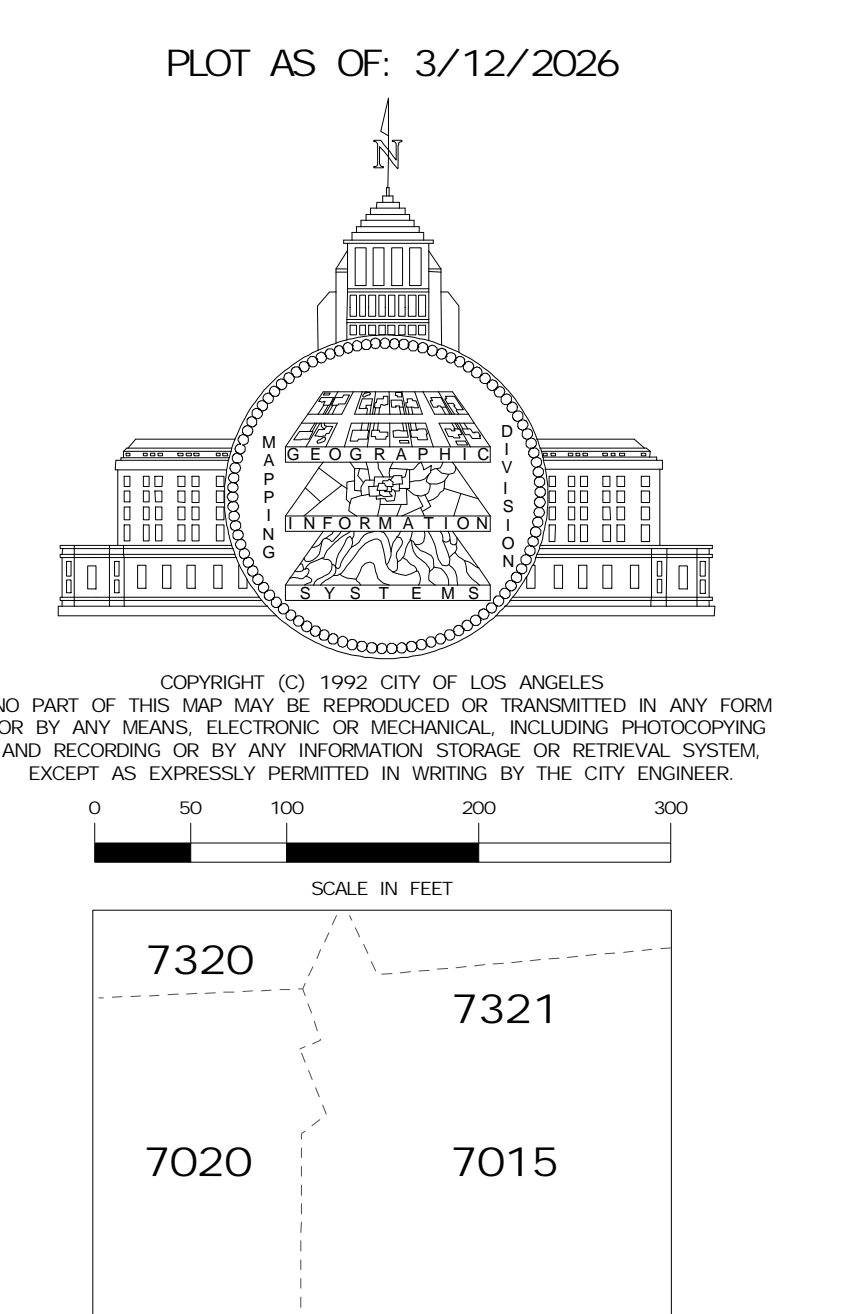
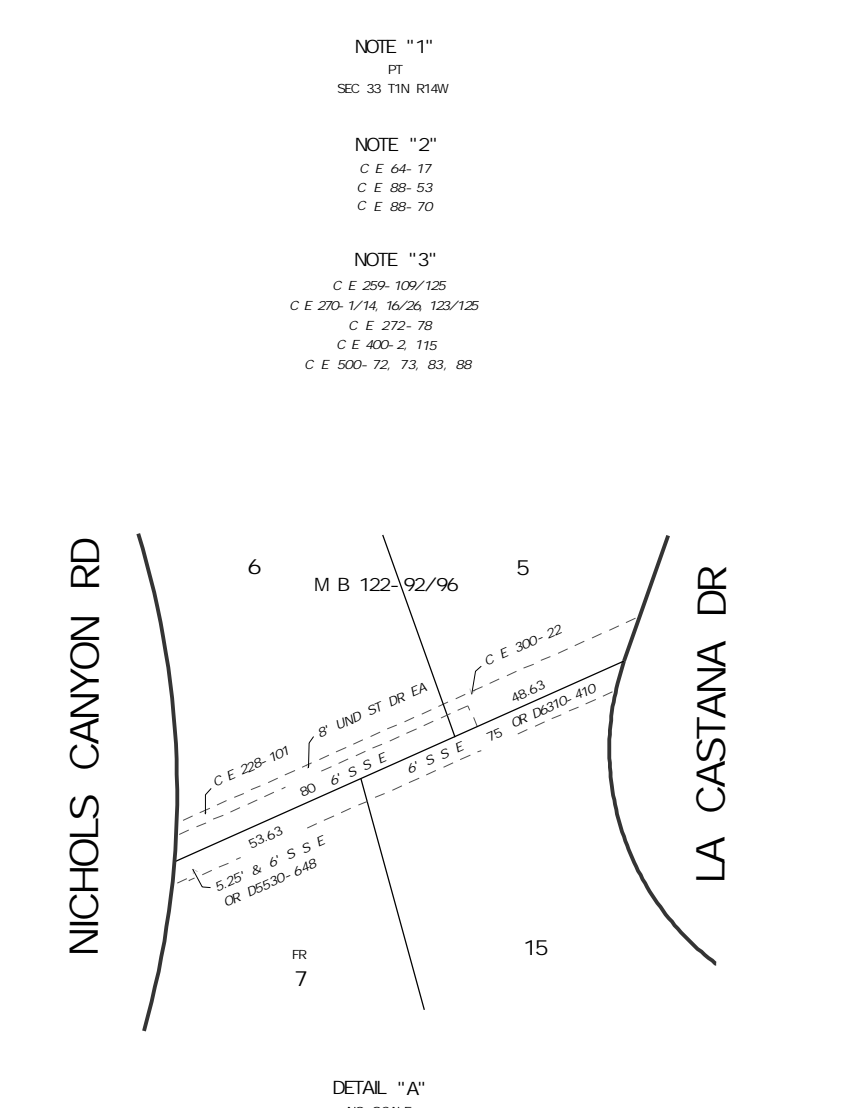
N 4,157,000  
N 1,867,181

N 4,156,000  
N 1,866,181

N 4,155,000  
N 1,865,181

157-5A181

156A181



ALFRED MATA, PE INTERIM CITY ENGINEER  
BUREAU OF ENGINEERING GIS DIVISION  
ESSAM AMARRAGY DIVISION MANAGER  
RAUL VIRGEN GIS CHIEF

CITY OF LOS ANGELES  
156B177