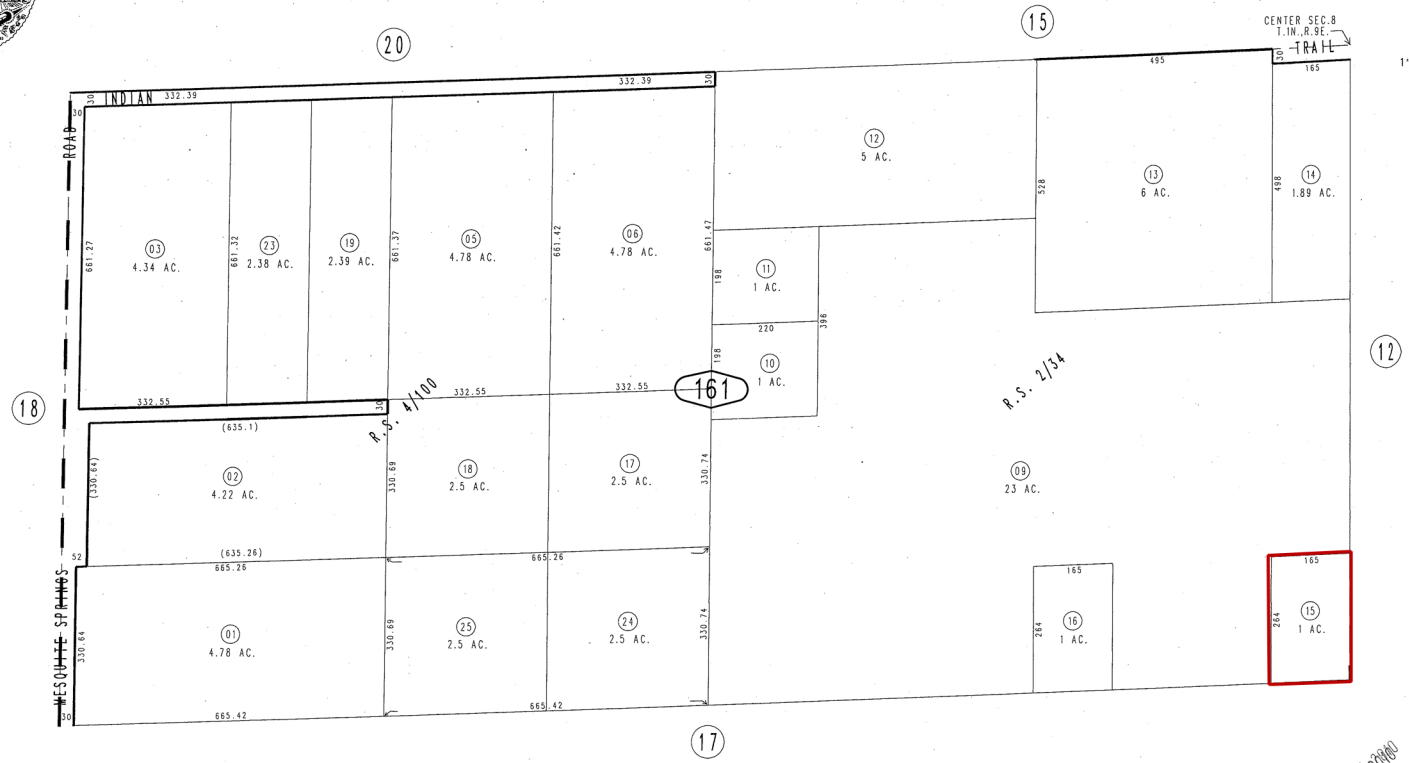
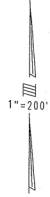


THIS MAP IS FOR THE PURPOSE  
OF AD VALOREM TAXATION ONLY.

N.1/2, S.W.1/4 Sec.8, T.1N.,R.9E., S.B.B.&M.  
R.S. 2/34

City of Twentynine Palms  
Tax Rate Area  
19001

0620-16



MAY 11-12-2008