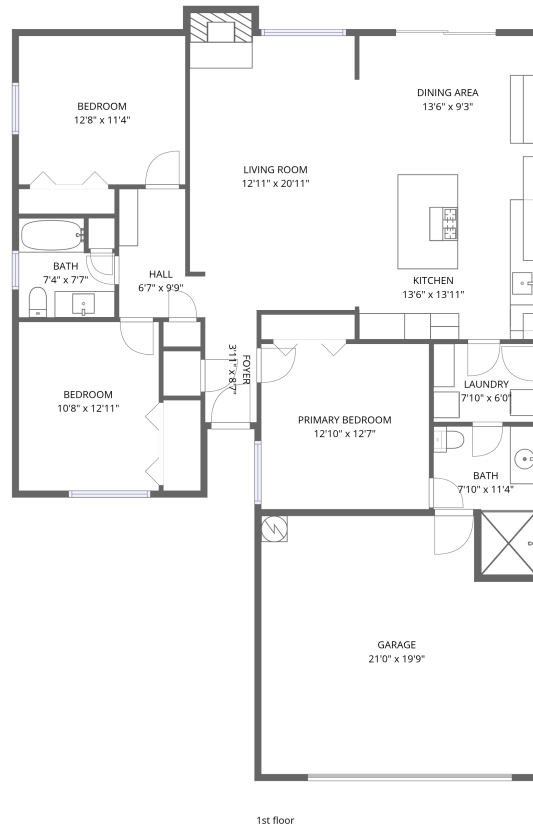


Home data report

13594 Bonwick Dr, Whittier, CA, US



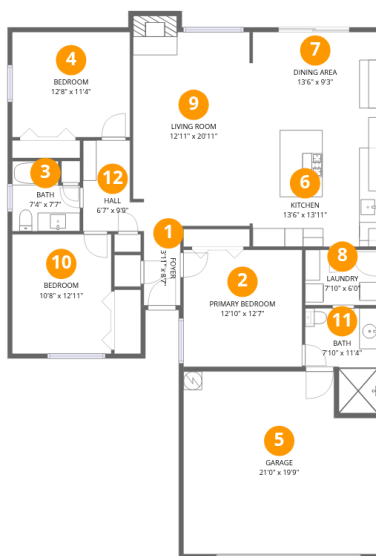
**Total Area: 1399 sq. ft**

1st Floor: 1399 sq. ft

Excluded: Garage 390 sq. ft, Fireplace 10 sq. ft, Walls: 112 sq. ft

## Property summary





## Room dimensions

Floor 1

Total:1399sqft Excluded: 400sqft

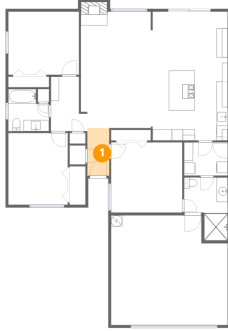
#		Dimensions	sqft	Counted as living area
1	Foyer	3'11" x 8'7"	34 sq. ft	Yes
2	Primary Bedroom	12'10" x 12'7"	162 sq. ft	Yes
3	Bath	7'4" x 7'7"	49 sq. ft	Yes
4	Bedroom	12'8" x 11'4"	144 sq. ft	Yes
5	Garage	21'0" x 19'9"	390 sq. ft	No
6	Kitchen	13'6" x 13'11"	188 sq. ft	Yes
7	Dining Area	13'6" x 9'3"	124 sq. ft	Yes
8	Laundry	7'10" x 6'0"	47 sq. ft	Yes
9	Living Room	12'11" x 20'11"	274 sq. ft	Yes
10	Bedroom	10'8" x 12'11"	138 sq. ft	Yes
11	Bath	7'10" x 11'4"	71 sq. ft	Yes

Home data report

**13594 Bonwick Dr,Whittier,CA,US**

#		Dimensions	sqft	Counted as living area
12	Hall	6'7" x 9'9"	54 sq. ft	Yes

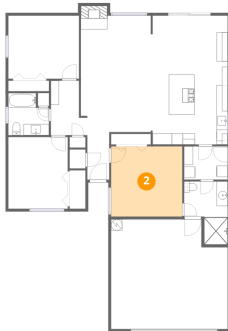
## 1 Floor 1 - Foyer



Dimensions: 3'11" x 8'7"  
Area: 34 sq. ft  
Counted as living area: Yes

Heated: Yes  
Finished: Yes  
Enclosed: Yes  
Contiguous: Yes  
Permitted: Yes  
Wet space: No  
Addition: No  
Conversion: No

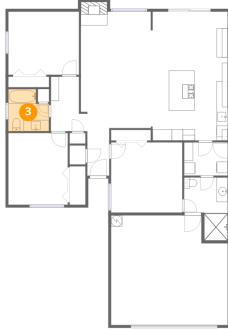
## 2 Floor 1 - Primary Bedroom



Dimensions: 12'10" x 12'7"  
Area: 162 sq. ft  
Counted as living area: Yes

Heated: Yes  
Finished: Yes  
Enclosed: Yes  
Contiguous: Yes  
Permitted: Yes  
Wet space: No  
Addition: No  
Conversion: No

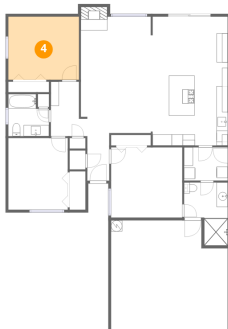
### 3 Floor 1 - Bath



Dimensions: 7'4" x 7'7"  
Area: 49 sq. ft  
Counted as living area: Yes

Heated: Yes  
Finished: Yes  
Enclosed: Yes  
Contiguous: Yes  
Permitted: Yes  
Wet space: Yes  
Addition: No  
Conversion: No

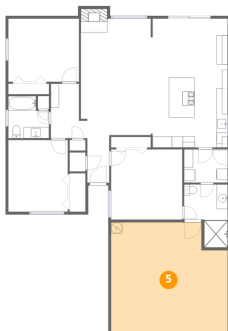
### 4 Floor 1 - Bedroom



Dimensions: 12'8" x 11'4"  
Area: 144 sq. ft  
Counted as living area: Yes

Heated: Yes  
Finished: Yes  
Enclosed: Yes  
Contiguous: Yes  
Permitted: Yes  
Wet space: No  
Addition: No  
Conversion: No

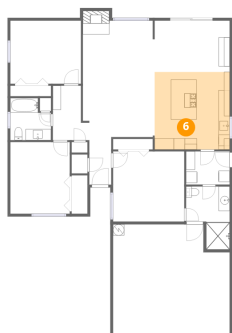
### 5 Floor 1 - Garage



Dimensions: 21'0" x 19'9"  
Area: 390 sq. ft  
Counted as living area: No

Heated: No  
Finished: No  
Enclosed: Yes  
Contiguous: Yes  
Permitted: Yes  
Wet space: No  
Addition: No  
Conversion: No

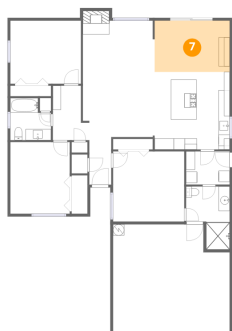
## 6 Floor 1 - Kitchen



Dimensions: 13'6" x 13'11"  
Area: 188 sq. ft  
Counted as living area: Yes

Heated: Yes  
Finished: Yes  
Enclosed: Yes  
Contiguous: Yes  
Permitted: Yes  
Wet space: No  
Addition: No  
Conversion: No

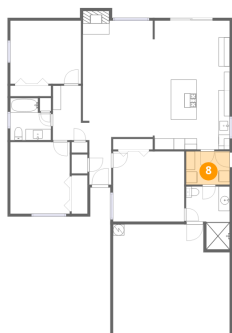
## 7 Floor 1 - Dining Area



Dimensions: 13'6" x 9'3"  
Area: 124 sq. ft  
Counted as living area: Yes

Heated: Yes  
Finished: Yes  
Enclosed: Yes  
Contiguous: Yes  
Permitted: Yes  
Wet space: No  
Addition: No  
Conversion: No

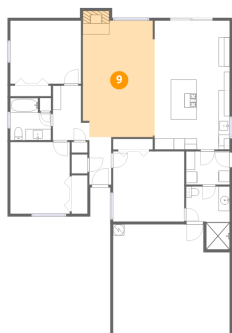
## 8 Floor 1 - Laundry



Dimensions: 7'10" x 6'0"  
Area: 47 sq. ft  
Counted as living area: Yes

Heated: Yes  
Finished: Yes  
Enclosed: Yes  
Contiguous: Yes  
Permitted: Yes  
Wet space: No  
Addition: No  
Conversion: No

## 9 Floor 1 - Living Room



Dimensions: 12'11" x 20'11"

Area: 274 sq. ft

Counted as living area: Yes

Heated: Yes

Finished: Yes

Enclosed: Yes

Contiguous: Yes

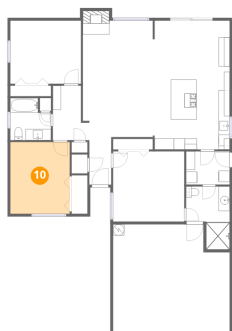
Permitted: Yes

Wet space: No

Addition: No

Conversion: No

## 10 Floor 1 - Bedroom



Dimensions: 10'8" x 12'11"

Area: 138 sq. ft

Counted as living area: Yes

Heated: Yes

Finished: Yes

Enclosed: Yes

Contiguous: Yes

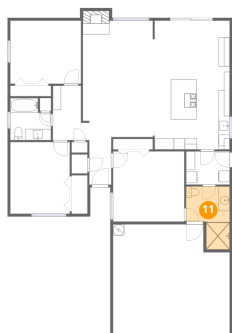
Permitted: Yes

Wet space: No

Addition: No

Conversion: No

## 11 Floor 1 - Bath



Dimensions: 7'10" x 11'4"

Area: 71 sq. ft

Counted as living area: Yes

Heated: Yes

Finished: Yes

Enclosed: Yes

Contiguous: Yes

Permitted: Yes

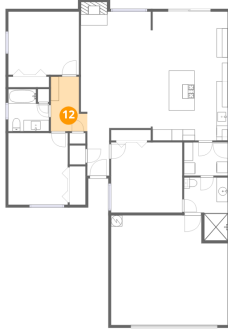
Wet space: Yes

Addition: No

Conversion: No

**12** Floor 1 - Hall

---



Dimensions: 6'7" x 9'9"  
Area: 54 sq. ft  
Counted as living area: Yes

Heated: Yes  
Finished: Yes  
Enclosed: Yes  
Contiguous: Yes  
Permitted: Yes  
Wet space: No  
Addition: No  
Conversion: No