

## Included Features

### Energy Efficiency

- LED surface-mount lighting throughout
- Central heating and air conditioning with programmable, night setback, digital thermostat
- Dual glazed white vinyl windows
- Water efficient toilets
- Low VOC interior paint
- Water efficient plumbing
- Prewire for electric vehicle charging

### Exceptional Interiors

- Kwikset® Breton satin nickel lever handle door hardware throughout
- Designer selected Moen® brushed nickel plumbing fixtures
- Dal One Quartz® counters with 4" backsplash at secondary baths
- Elongated toilets in powder, bath 2, and bath 3
- Chrome trim with 1/4" clear tempered glass in shower at bath 3
- Rectangular undermount sinks at bath 2 and bath 3
- Wall-mounted handrails with satin nickel brackets
- Pedestal sink at powder

### Spacious Gourmet Kitchens

- Dal Quartz® countertops with 6" backsplash and full backsplash at cooktop
- Spacious kitchen island with pendant prewires and trash recycle bin (per plan)
- Front control, LG® stainless steel, slide-in electric range with convection and 5 burners
- Microwave and hood stainless steel combination with LED display
- 4-cycle, 5 options, digital controlled stainless steel dishwasher
- White Thermofoil Shaker style cabinets with satin nickel pulls

- Stainless steel undermount single basin sink with Moen® pull down, chrome spray faucet
- InSinkErator 1/2 horsepower garbage disposal

### Inspired Primary Suites

- Dal One Quartz® counters with 4" backsplash
- 3-wall composite, subway tile and shower with seat
- Chrome trim with 1/4" clear tempered glass at shower
- Dual rectangular undermount sinks
- Polished chrome hardware
- Primary baths with separate elongated toilets
- Walk-in closets

### Refined Exteriors

- Classic Spanish architecture
- Illuminated crystal address plaque with matching porch light

### Smart Home Features

Throughout each residence, you'll discover hand-selected features and finishes to make life better than ever.

- Honeywell Lyric® smart thermostat
- Ring® Video Doorbell Pro
- Echo Show
- Leviton switches
- WiFi enabled garage door opener

### Personalized Enhancements

Alisal offers many opportunities to personalize your home with a variety of options and upgrades. Please consult a New Homes Sales Counselor for details.



## About Brandywine Homes

A family-owned and operated homebuilder and community developer, Brandywine Homes is proud to celebrate over 30 years of developing land and providing quality homes for Southern Californians. We pride ourselves on attracting and retaining the industry's most talented and dedicated employees whose expertise reflects that of our principals.

Our broad capabilities can be seen in the wide variety of housing we have successfully developed — from inspired townhome collections to luxurious, single family homes to semi-custom, estate-sized homes. We offer the diversity necessary to build homes in communities throughout Southern California, from new suburban developments to urban infill locations.

At the foundation of every Brandywine Home is our utmost dedication to excellence. A recognized leader in challenging infill projects, Brandywine continues to revitalize a number of Southern California's oldest and most established towns, rich in history. We build homes that respect and complement the heritage, values and architectural integrity of existing neighborhoods and the people who live there — while also making a positive contribution to the community.

design by PTI.com



# Alisal



## BRANDYWINE HOMES

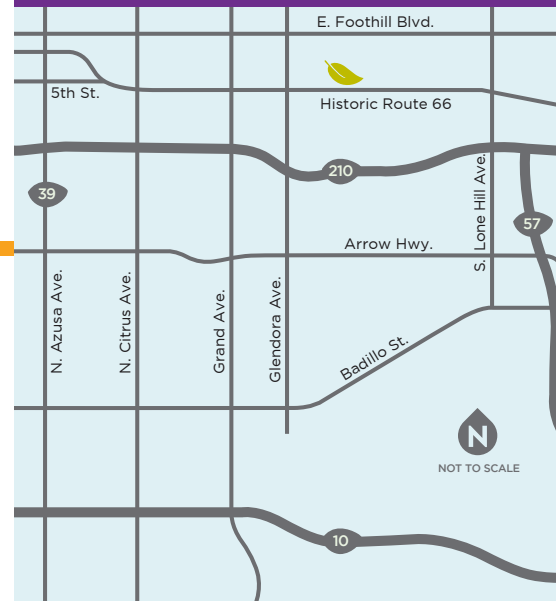
# WELCOME HOME TO ALISAL

Experience tranquil suburban living at Alisal in Glendora! Designed for those seeking modern comforts such as energy efficiency and timeless sophistication, Alisal has it all. This intimate, new townhome community has an impressive selection of spacious floor plans with plenty of room to grow and thrive.



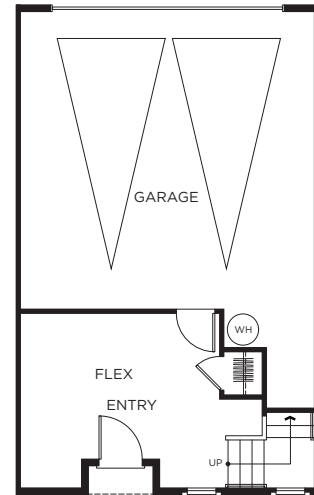
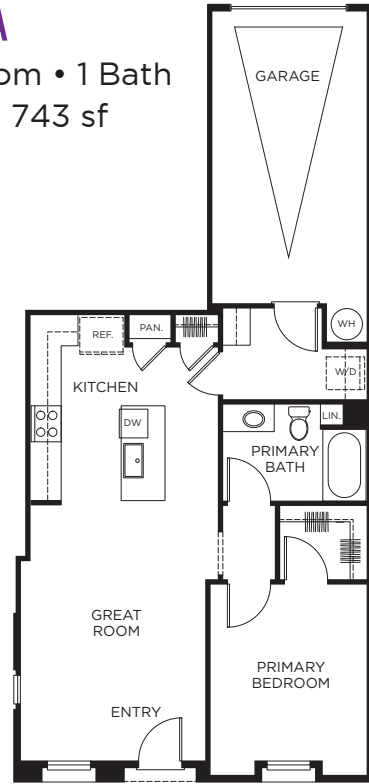
626-737-7380  
GlendoraNewHomes.com

745 E. Route 66  
Glendora, CA 91740



### PLAN 1A

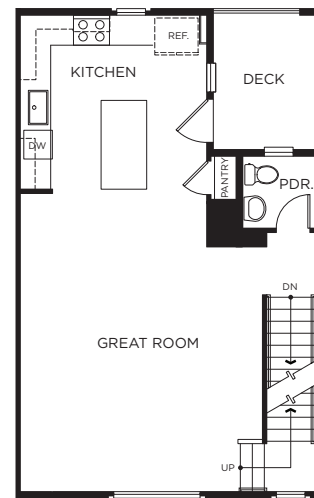
1 Bedroom • 1 Bath  
Approx. 743 sf



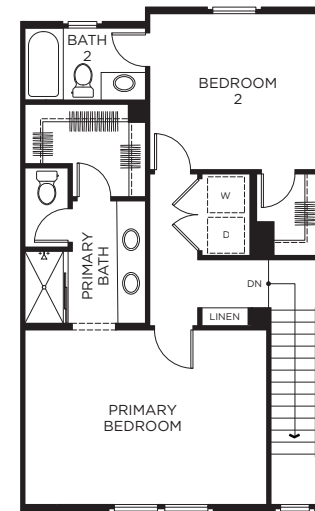
FIRST FLOOR

### PLAN 2B

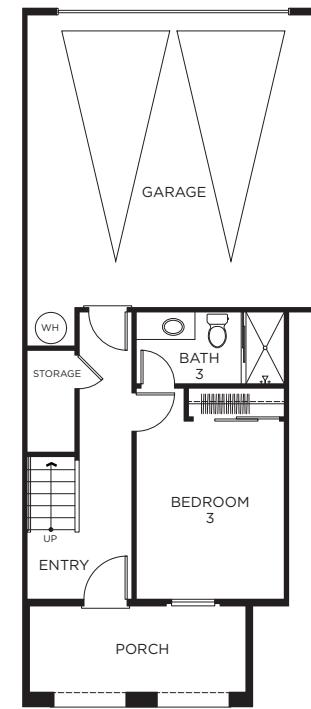
2 Bedrooms + Flex  
2.5 Baths  
Approx. 1,371-1,485 sf



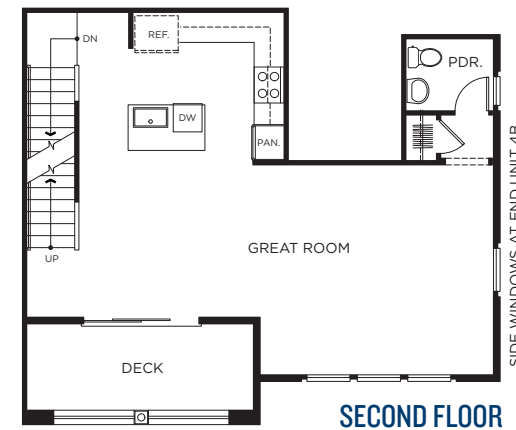
SECOND FLOOR



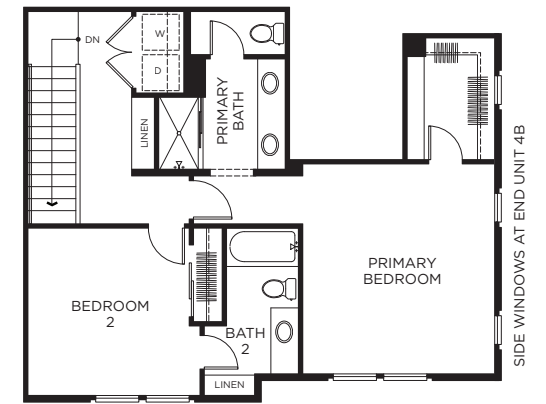
THIRD FLOOR



FIRST FLOOR



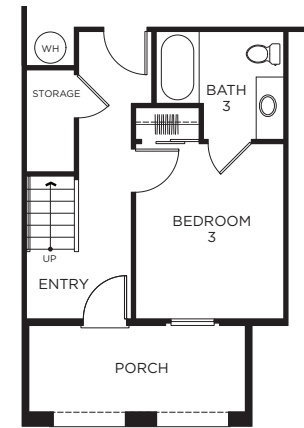
SECOND FLOOR



THIRD FLOOR

### PLAN 4A/4B

3 Bedrooms • 3.5 Baths  
Approx. 1,728 sf

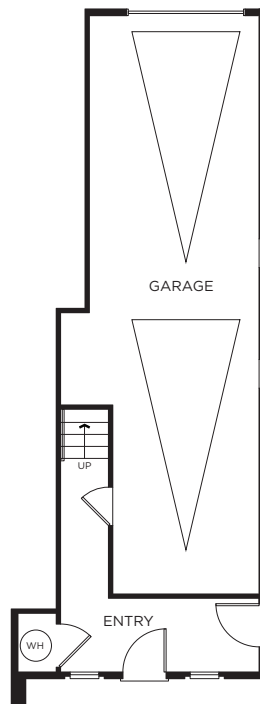


PLAN 4AX/4BX ACC.

### PLAN 5A

3 Bedrooms + Office  
2.5 Baths  
Approx. 1,939 sf

VIEW ALL  
FLOOR PLANS



FIRST FLOOR

### PLAN 3A/3B

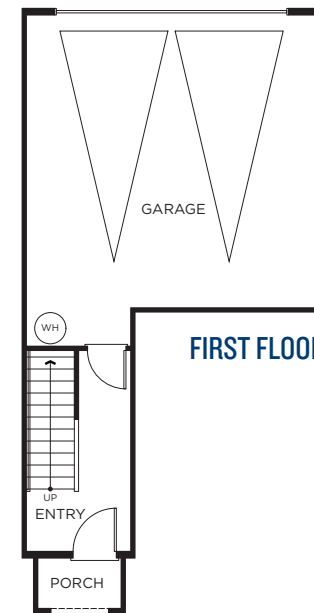
2 Bedrooms • 2.5 Baths  
Approx. 1,439 sf



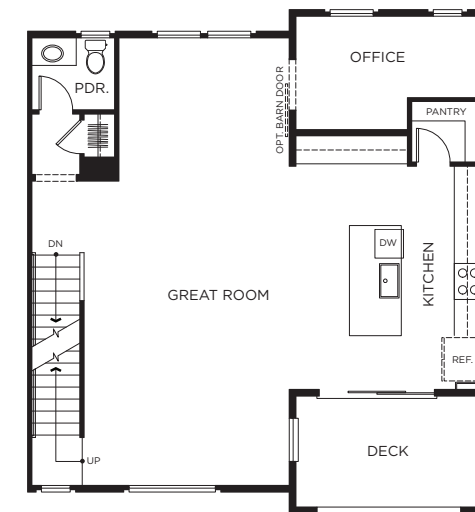
SECOND FLOOR



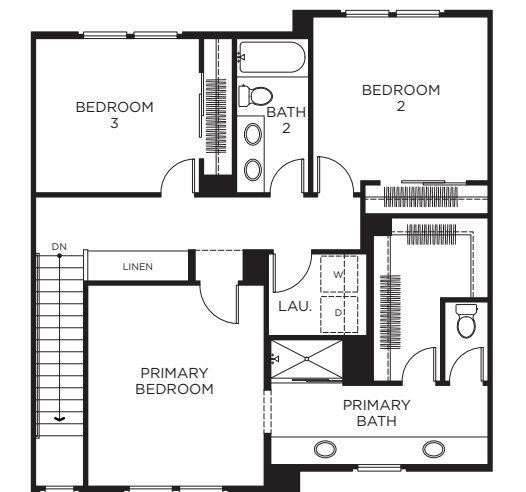
THIRD FLOOR



FIRST FLOOR



SECOND FLOOR



THIRD FLOOR



*The dream becomes real*

All your must-haves are here, including gourmet kitchens, open floor plans, designer finishes, innovative features, and the list goes on and on. Welcome home.