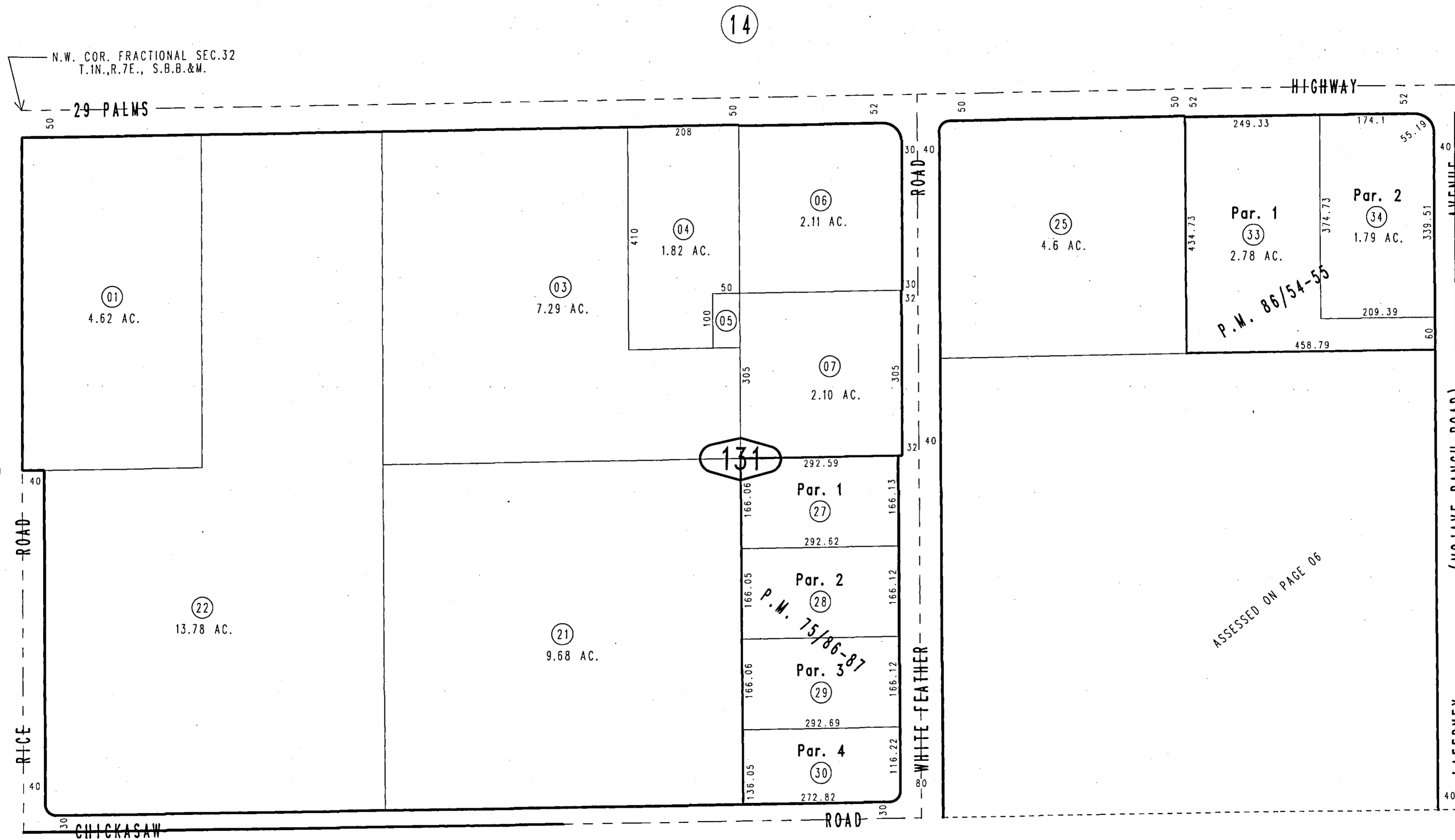


THIS MAP IS FOR THE PURPOSE
OF AD VALOREM TAXATION ONLY.

N.1/2, N.W.1/4 Fractional Sec.32, T.1N.,R.7E., S.B.B.&M.

Morongo Unified
Tax Rate Area
94004

0604-13



March 2005

Parcel Map No. 8390, P.M. 86/54-55
Parcel Map No. 7490, P.M. 75/86-87

Assessor's Map
Book 0604 Page 13
San Bernardino County

REVISED
04/30/13 LH