

Home data report

1455 La Perla Ave, Long Beach, CA, US



Room dimensions

Floor 1

Total: 3156 sqft Excluded: 461 sqft

#		Dimensions	sqft	Counted as living area
1	Dining Room	17'9" x 15'2"	269 sq. ft	Yes
2	Bedroom	18'11" x 13'6"	233 sq. ft	Yes
3	Garage	23'1" x 24'6"	455 sq. ft	No
4	Pantry	3'10" x 6'7"	25 sq. ft	Yes
5	Hall	9'10" x 4'0"	40 sq. ft	Yes
6	Living Room	29'8" x 19'6"	541 sq. ft	Yes
7	Hall	9'0" x 4'6"	40 sq. ft	Yes
8	Breakfast Nook	17'0" x 8'3"	114 sq. ft	Yes
9	Hall	3'6" x 10'11"	38 sq. ft	Yes
10	Hall	3'10" x 4'8"	18 sq. ft	Yes
11	Foyer	13'4" x 9'7"	128 sq. ft	Yes

Scan captured on Thu, 28 May 2026 21:36:01 GMT

MEASUREMENTS ARE DEEMED HIGHLY RELIABLE BUT NOT GUARANTEED

Home data report

1455 La Perla Ave, Long Beach, CA, US

#		Dimensions	sqft	Counted as living area
12	Utility	2'0" x 3'1"	6 sq. ft	No
13	Bath	5'2" x 10'11"	51 sq. ft	Yes
14	Pantry	5'8" x 3'5"	19 sq. ft	Yes
15	Family Room	15'7" x 19'6"	284 sq. ft	Yes
16	Bedroom	12'11" x 12'7"	163 sq. ft	Yes
17	Hall	5'1" x 20'0"	102 sq. ft	Yes
18	Bath	6'3" x 8'7"	54 sq. ft	Yes
19	Primary Bath	10'5" x 9'4"	96 sq. ft	Yes
20	Primary Bedroom	20'3" x 23'11"	363 sq. ft	Yes
21	Kitchen	10'4" x 22'5"	197 sq. ft	Yes

1 Floor 1 - Dining Room



Dimensions: 17'9" x 15'2"
Area: 269 sq. ft
Counted as living area: Yes

Heated: Yes
Finished: Yes
Enclosed: Yes
Contiguous: Yes
Permitted: Yes
Wet space: No
Addition: No
Conversion: No

2 Floor 1 - Bedroom



Dimensions: 18'11" x 13'6"
Area: 233 sq. ft
Counted as living area: Yes

Heated: Yes
Finished: Yes
Enclosed: Yes
Contiguous: Yes
Permitted: Yes
Wet space: No
Addition: No
Conversion: No

3 Floor 1 - Garage



Dimensions: 23'1" x 24'6"
Area: 455 sq. ft
Counted as living area: No

Heated: No
Finished: No
Enclosed: Yes
Contiguous: Yes
Permitted: Yes
Wet space: No
Addition: No
Conversion: No

4 Floor 1 - Pantry



Dimensions: 3'10" x 6'7"
Area: 25 sq. ft
Counted as living area: Yes

Heated: Yes
Finished: Yes
Enclosed: Yes
Contiguous: Yes
Permitted: Yes
Wet space: No
Addition: No
Conversion: No

5 Floor 1 - Hall



Dimensions: 9'10" x 4'0"
Area: 40 sq. ft
Counted as living area: Yes

Heated: Yes
Finished: Yes
Enclosed: Yes
Contiguous: Yes
Permitted: Yes
Wet space: No
Addition: No
Conversion: No

6 Floor 1 - Living Room



Dimensions: 29'8" x 19'6"
Area: 541 sq. ft
Counted as living area: Yes

Heated: Yes
Finished: Yes
Enclosed: Yes
Contiguous: Yes
Permitted: Yes
Wet space: No
Addition: No
Conversion: No

7 Floor 1 - Hall



Dimensions: 9'0" x 4'6"
Area: 40 sq. ft
Counted as living area: Yes

Heated: Yes
Finished: Yes
Enclosed: Yes
Contiguous: Yes
Permitted: Yes
Wet space: No
Addition: No
Conversion: No

8 Floor 1 - Breakfast Nook



Dimensions: 17'0" x 8'3"
Area: 114 sq. ft
Counted as living area: Yes

Heated: Yes
Finished: Yes
Enclosed: Yes
Contiguous: Yes
Permitted: Yes
Wet space: No
Addition: No
Conversion: No

9 Floor 1 - Hall



Dimensions: 3'6" x 10'11"
Area: 38 sq. ft
Counted as living area: Yes

Heated: Yes
Finished: Yes
Enclosed: Yes
Contiguous: Yes
Permitted: Yes
Wet space: No
Addition: No
Conversion: No

10 Floor 1 - Hall



Dimensions: 3'10" x 4'8"
Area: 18 sq. ft
Counted as living area: Yes

Heated: Yes
Finished: Yes
Enclosed: Yes
Contiguous: Yes
Permitted: Yes
Wet space: No
Addition: No
Conversion: No

11 Floor 1 - Foyer



Dimensions: 13'4" x 9'7"
Area: 128 sq. ft
Counted as living area: Yes

Heated: Yes
Finished: Yes
Enclosed: Yes
Contiguous: Yes
Permitted: Yes
Wet space: No
Addition: No
Conversion: No

12 Floor 1 - Utility



Dimensions: 2'0" x 3'1"
Area: 6 sq. ft
Counted as living area: No

Heated: Yes
Finished: No
Enclosed: Yes
Contiguous: Yes
Permitted: Yes
Wet space: No
Addition: No
Conversion: No

13 Floor 1 - Bath



Dimensions: 5'2" x 10'11"
Area: 51 sq. ft
Counted as living area: Yes

Heated: Yes
Finished: Yes
Enclosed: Yes
Contiguous: Yes
Permitted: Yes
Wet space: Yes
Addition: No
Conversion: No

14 Floor 1 - Pantry



Dimensions: 5'8" x 3'5"
Area: 19 sq. ft
Counted as living area: Yes

Heated: Yes
Finished: Yes
Enclosed: Yes
Contiguous: Yes
Permitted: Yes
Wet space: No
Addition: No
Conversion: No

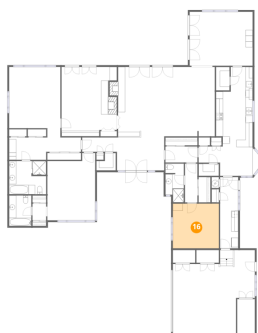
15 Floor 1 - Family Room



Dimensions: 15'7" x 19'6"
Area: 284 sq. ft
Counted as living area: Yes

Heated: Yes
Finished: Yes
Enclosed: Yes
Contiguous: Yes
Permitted: Yes
Wet space: No
Addition: No
Conversion: No

16 Floor 1 - Bedroom



Dimensions: 12'11" x 12'7"
Area: 163 sq. ft
Counted as living area: Yes

Heated: Yes
Finished: Yes
Enclosed: Yes
Contiguous: Yes
Permitted: Yes
Wet space: No
Addition: No
Conversion: No

17 Floor 1 - Hall



Dimensions: 5'1" x 20'0"
Area: 102 sq. ft
Counted as living area: Yes

Heated: Yes
Finished: Yes
Enclosed: Yes
Contiguous: Yes
Permitted: Yes
Wet space: No
Addition: No
Conversion: No

18 Floor 1 - Bath



Dimensions: 6'3" x 8'7"
Area: 54 sq. ft
Counted as living area: Yes

Heated: Yes
Finished: Yes
Enclosed: Yes
Contiguous: Yes
Permitted: Yes
Wet space: Yes
Addition: No
Conversion: No

19 Floor 1 - Primary Bath



Dimensions: 10'5" x 9'4"
Area: 96 sq. ft
Counted as living area: Yes

Heated: Yes
Finished: Yes
Enclosed: Yes
Contiguous: Yes
Permitted: Yes
Wet space: Yes
Addition: No
Conversion: No

20 Floor 1 - Primary Bedroom



Dimensions: 20'3" x 23'11"
Area: 363 sq. ft
Counted as living area: Yes

Heated: Yes
Finished: Yes
Enclosed: Yes
Contiguous: Yes
Permitted: Yes
Wet space: No
Addition: No
Conversion: No

21 Floor 1 - Kitchen



Dimensions: 10'4" x 22'5"
Area: 197 sq. ft
Counted as living area: Yes

Heated: Yes
Finished: Yes
Enclosed: Yes
Contiguous: Yes
Permitted: Yes
Wet space: No
Addition: No
Conversion: No