



# Appendix I

## City of Pomona

# Zoning and Development Code

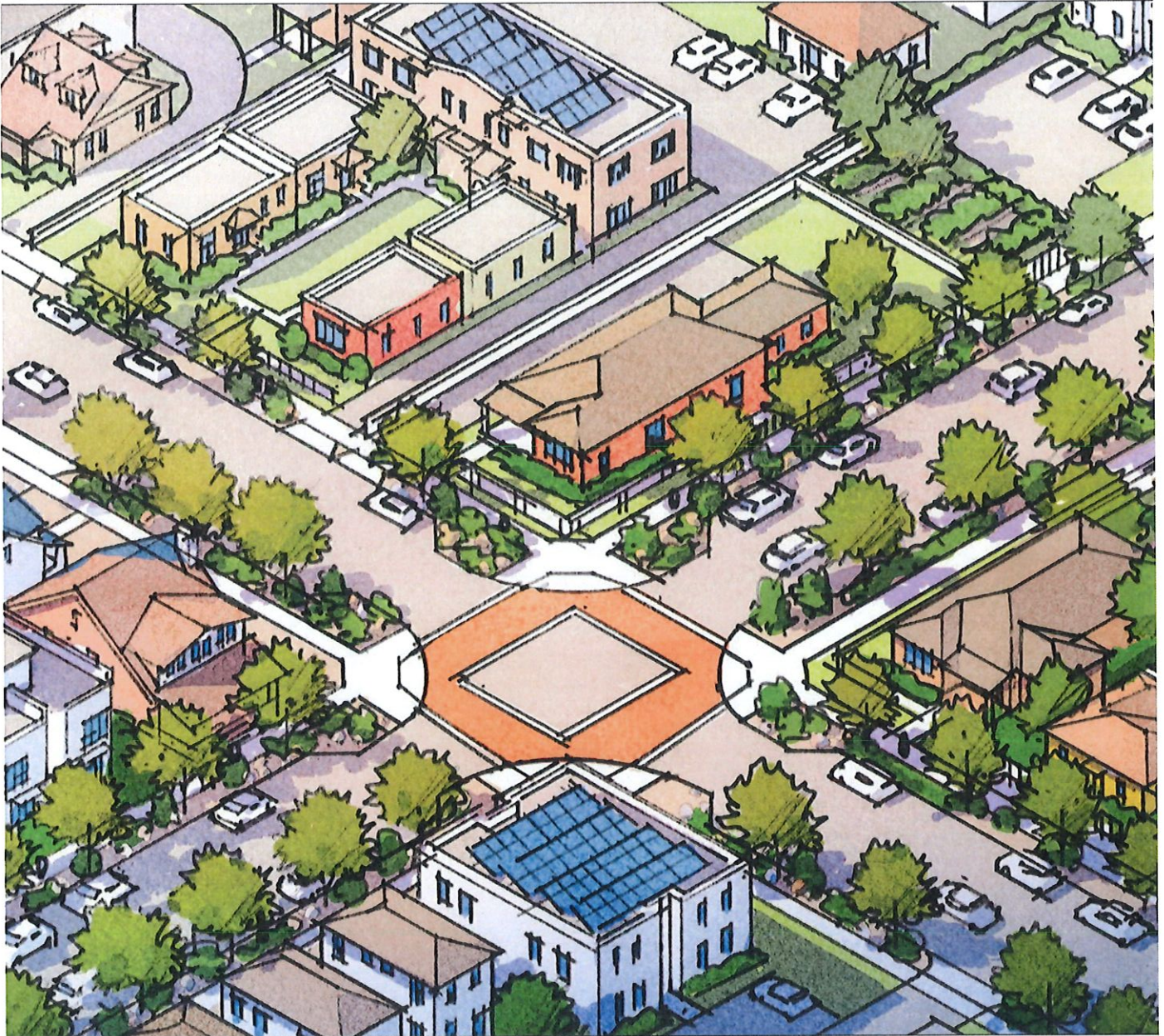
Adopted  
July 1, 2024

Consolidated District Pages:

**Residential Neighborhood District 1 (RND1)**

Updated  
February 2025

## 200.B. Residential Neighborhood Districts (RND)



### 1. General Intent

- a. A walkable neighborhood environment intended to accommodate a variety of lower-intensity housing options—up to 2.5 stories tall—including single-unit homes, cottage courts, duplexes, triplexes, fourplexes, and other small multifamily development.
- b. Residential Neighborhood Districts (RND) implement the Residential Neighborhood Place Type established in the *General Plan*.

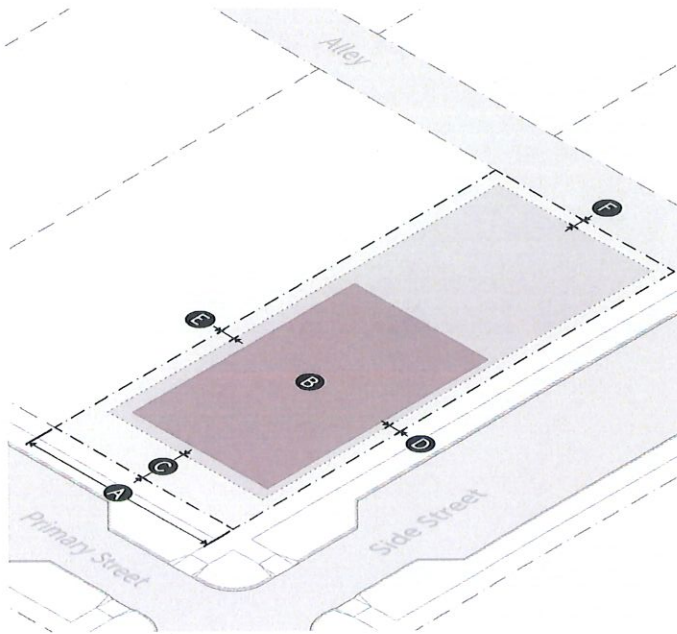
## 2. Districts

There are 5 Residential Neighborhood Districts (RNDs). The first bracket set [ ] of each RND zoning district is summarized below. *Part 6. Site* rules also apply to all RND zoning districts.

Zoning District	Form Module	Frontage Module	Use Module	Zoning District Description
Residential Neighborhood District 1 <b>(RND1)</b>	House Medium 1 <b>(HM1)</b> <i>Sec. 320.C</i>	Neighborhood Yard 1 <b>(N1)</b> <i>Sec. 420.A</i>	Residential 1 <b>(R1)</b> <i>Sec. 520.C</i>	Sites with house-scale buildings up to 2.5 stories tall, frontyards, residential primary uses, limited nonresidential primary uses, and limited nonresidential accessory uses.
Residential Neighborhood District 2 <b>(RND2)</b>	House Narrow 1 <b>(HN1)</b> <i>Sec. 320.A</i>	Neighborhood Yard 2 <b>(N2)</b> <i>Sec. 420.B</i>	Residential 1 <b>(R1)</b> <i>Sec. 520.C</i>	Sites with narrow house-scale buildings up to 2.5 stories tall, shallow frontyards, residential primary uses, limited nonresidential primary uses, and limited nonresidential accessory uses.
Residential Neighborhood District 3 <b>(RND3)</b>	Low-Rise Medium 1 <b>(LM1)</b> <i>Sec. 330.A</i>	Neighborhood Yard 1 <b>(N1)</b> <i>Sec. 420.A</i>	Residential 1 <b>(R1)</b> <i>Sec. 520.C</i>	Sites with low-rise buildings up to 2.5 stories tall, frontyards, residential primary uses, limited nonresidential primary uses, and limited nonresidential accessory uses.
Residential Neighborhood District 4 <b>(RND4)</b>	House Broad 1 <b>(HB1)</b> <i>Sec. 320.D</i>	Neighborhood Yard 1 <b>(N1)</b> <i>Sec. 420.A</i>	Residential 1 <b>(R1)</b> <i>Sec. 520.C</i>	Sites with wide house-scale buildings up to 2.5 stories tall, frontyards, residential primary uses, limited nonresidential primary uses, and limited nonresidential accessory uses.
Residential Neighborhood District 5 <b>(RND5)</b>	House Medium 1 <b>(HM1)</b> <i>Sec. 320.C</i>	Neighborhood Yard 1 <b>(N1)</b> <i>Sec. 420.A</i>	Residential Mixed 1 <b>(RX1)</b> <i>Sec. 520.C</i>	Sites with house-scale buildings up to 2.5 stories tall, frontyards, and residential and limited nonresidential primary uses.

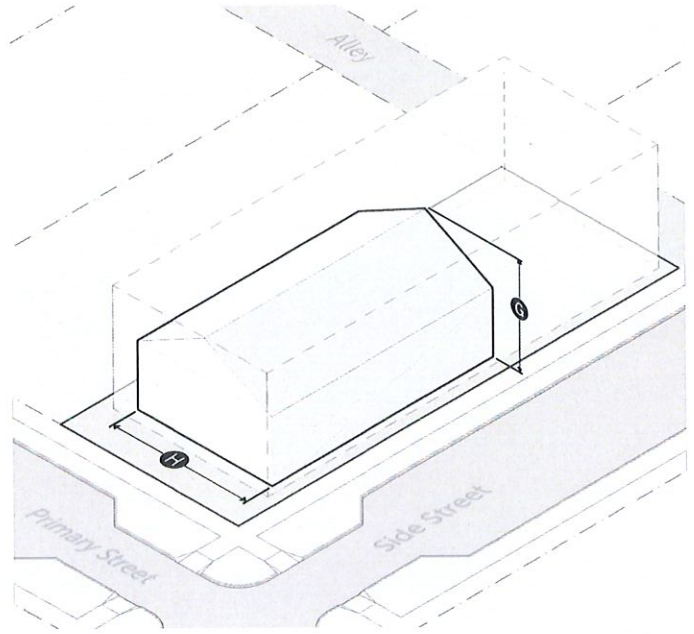
# 320.C. House Medium 1 (HM1)

## 1. BUILDING PLACEMENT



LOT SIZE		Sec. 360.
Lot Area (min)		n/a
<b>A</b> Lot Width		
Front access (min)		45'
Side/alley access (min)		30'
COVERAGE		Sec. 370.
Impervious coverage (max)		75%
<b>B</b> Building coverage (max)		45%
Building setbacks		
<b>C</b> Primary street lot line (min)		15'
<b>D</b> Side street lot line (min)		5'
<b>E</b> Side lot line (min)		5'
Rear lot line (min)		10'
Alley setbacks		
<b>F</b> Alley lot line (min)		3' or 20'
Alley centerline (min)		13' or 30'
AMENITY		Sec. 380.
Outdoor amenity space		
1-3 dwelling units (min)		n/a
4+ dwelling units (min)		15%

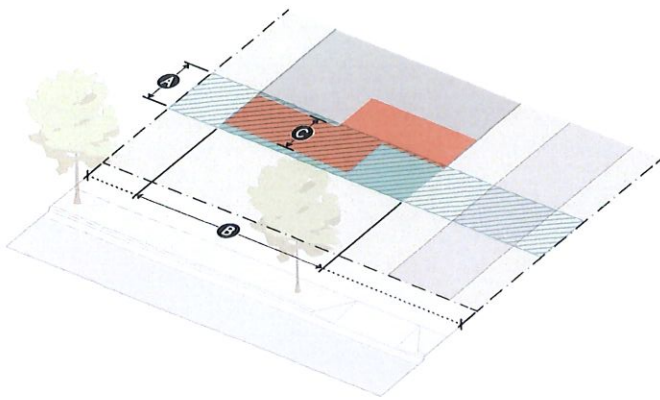
## 2. BUILDING FORM



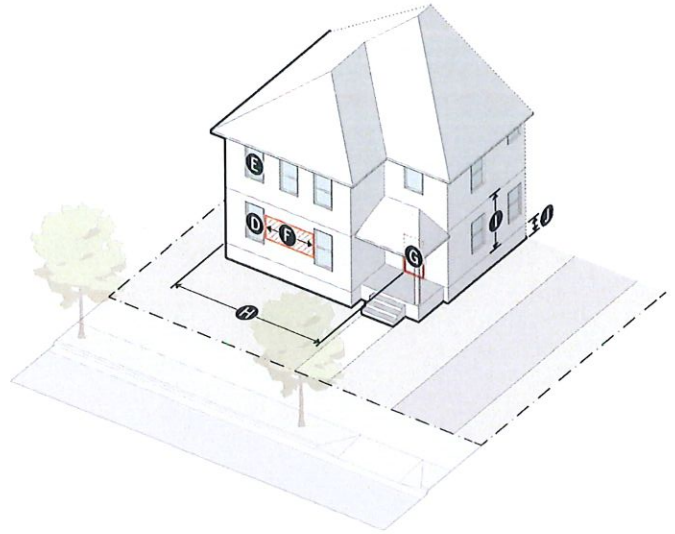
BUILDING		Sec. 390.
<b>G</b> Building height (max stories/feet)		2.5/32'
<b>H</b> Building width (max)		60'
Building break (min)		n/a
<b>I</b> Building depth (max)		n/a
FENCES AND WALLS		Sec. 620.E
Front yard type		See Frontage Module
Side/rear yard type		Type VI

# 420.A. Neighborhood Yard 1 (N1)

## 1. STREET ORIENTATION



## 2. STREET-FACING FACADE



	Primary Street	Side Street
<b>BUILD-TO</b>	<u>Sec. 470.</u>	
Applicable stories (min)	All	All
<b>A</b> Build-to depth (max)	25'	20'
<b>B</b> Build-to width (min)	50%	30%
Pedestrian amenity allowance	n/a	n/a
<b>C</b> Active depth (min)	9'	5'
<b>PARKING LOCATION</b>	<u>Sec. 480.</u>	
Parking between building and street	Not allowed	Not allowed
<b>LANDSCAPING</b>	<u>Sec. 490.</u>	
Frontage planting area (min)	50%	50%
Frontage yard fence and wall type allowed	Type A3	Type A3

	Primary Street	Side Street
<b>TRANSPARENCY</b>	<u>Sec. 4100.</u>	
<b>D</b> Ground story transparency	20%	10%
<b>E</b> Upper story transparency	15%	10%
<b>F</b> Active wall spacing (max)	30'	40'
<b>ENTRANCES</b>	<u>Sec. 4110.</u>	
<b>G</b> Street-facing entrance	Required	n/a
<b>H</b> Entrance spacing (max)	30'	n/a
Required Entry feature	Required	No
Options	<ul style="list-style-type: none"> <li>• Porch</li> <li>• Stoop</li> <li>• Forecourt</li> </ul>	
<b>GROUND STORY</b>	<u>Sec. 4120.</u>	
<b>I</b> Ground story-height		
Residential (min)	9'	9'
Non-residential (min)	10'	10'
<b>J</b> Ground-story elevation		
Residential (min/max)	0'/5'	0'/5'
Non-residential (min/max)	0'/2'	0'/2'

### 520.C. Allowed Use Table

Use	Use Module															Reference
	R1	RX1	CX1	CX2	CX3	CX4	CX5	IX1	I1	I2	I3	P1	P2	OS1	OS2	
<b>RESIDENTIAL</b>																
<b>Household Living:</b>																
Dwelling Unit	P	P	P	P	P	P	P*	P	-	-	-	C	FD	-	-	<i>Sec. 540.A.1.a.</i>
Manufactured Housing Park	P*	-	-	-	-	-	-	-	-	-	-	-	FD	-	-	<i>Sec. 540.A.1.b.</i>
Live/Work Unit	-	P*	P*	P*	P*	P*	P*	P*	-	-	-	C*	FD	-	-	<i>Sec. 540.A.1.c.</i>
Family Day Care, Small	P*	P*	P*	P*	P*	P*	P*	P*	-	-	-	P*	FD	-	-	<i>Sec. 540.A.1.d.</i>
Family Day Care, Large	P*	P*	P*	P*	P*	P*	P*	P*	-	-	-	P*	FD	-	-	<i>Sec. 540.A.1.d.</i>
Low-Barrier Navigation Center	P	P	P	P	P	P	P	P	-	-	-	P	FD	-	-	
Community Care Center	P	P	P	P	P	P	P	P	-	-	-	P	FD	-	-	
<b>Transient Occupancy:</b>																
Short-Term Rental	P*	P*	P*	P*	P*	P*	P*	P*	-	-	-	-	FD	-	-	<i>Sec. 540.A.2.a.</i>
Hotel/Motel	-	-	C	C	C	C	C	C	-	-	-	-	FD	-	-	
Boardinghouse/ Roominghouse	-	-	P	P	P	P	P	P	-	-	-	-	FD	-	-	
<b>ASSEMBLY</b>																
<b>Civic and Institutional:</b>																
Campus Format	C	C	C	C	C	C	C	C	-	-	-	-	FD	-	-	
Non-Campus Format, Small	P	P	P	P	P	P	P	P	-	-	-	-	FD	-	-	
Non-Campus Format, Large	C	C	C	C	C	C	C	C	-	-	-	-	FD	-	-	
Sports Arena and Stadium	-	-	-	-	C	C	C	C	-	-	-	C	FD	-	-	
<b>OPEN SPACE AND RECREATION</b>																
Nature Reserve	P	P	P	P	P	P	P	P	P	P	P	P	FD	P	P	
Open Space, Public	P	P	P	P	P	P	P	P	P	P	P	P	FD	P	P	
<b>Recreation, Public:</b>																
General	P	P	P	P	P	P	P	P	P	C	C	P	FD	P	C	
Golf Course	C	C	C	C	C	C	C	C	-	-	-	C	FD	C	-	
<b>Indoor Recreation, Commercial:</b>																
Small	-	-	P	P	P	P	P	P	P	P	P	-	FD	-	-	
Large	-	-	-	C	C	C	C	C	C	P	P	-	FD	-	-	
<b>Outdoor Recreation, Commercial:</b>																
General	C	C	C	C	C	C	C	C	-	-	-	-	FD	C	-	
Golf Course	C	C	C	C	C	C	C	C	-	-	-	-	FD	C	-	
Cemetery	C*	C*	-	-	-	-	-	-	-	-	-	-	FD	C*	C*	<i>Sec. 540.B.1.</i>
<b>INFRASTRUCTURE</b>																
General Public Utility Infrastructure	P*	P*	P*	P*	P*	P*	P*	P*	P*	P*	P*	P*	FD	C*	-	<i>Sec. 540.C.1.</i>
Flood Control Facility	P	P	P	P	P	P	P	P	P	P	P	P	FD	C	C	

KEY: P = Permitted; C = Conditional use permit; ; - = Not permitted; \* = Use standard applies; FD = Fairplex Overlay District; W = Wireless facility permit; CD = Cannabis Overlay District

Use	Use Module																Reference
	R1	RX1	CX1	CX2	CX3	CX4	CX5	IX1	I1	I2	I3	P1	P2	OS1	OS2		
Public Utility Substation/ Facility	C	C	C	C	C	C	C	C	P	P	P	P	P	FD	C	C	
Wireless Telecommunications Facility:																	
Stealth Facility	-	-	W*	W*	W*	W*	W*	W*	W*	W*	W*	W*	W*	FD	W*	W*	<a href="#">Sec. 540.C.2.</a>
Monopole Facility	-	-	-	-	-	-	-	-	-	-	-	-	FD	-	-	-	
Data Center	-	-	-	-	-	-	-	-	-	-	-	-	FD	-	-	-	
Freight Terminal	-	-	-	-	-	-	-	-	-	-	-	-	FD	-	-	-	
Heliport	-	-	-	-	-	C	C	C	C	C	C	C	FD	-	-	-	
Railway Facility	-	-	C	C	C	C	C	C	C	P	P	C	FD	-	-	-	
Transit Station	C	C	C	P	P	P	P	P	P	C	C	P	FD	C	-	-	
GENERAL COMMERCIAL																	
Veterinary Care	-	-	P*	P*	P*	P*	P*	P*	P*	P*	P*	-	FD	-	-	-	<a href="#">Sec. 540.D.1.</a>
Commissary Kitchen	-	-	-	-	-	C*	P*	P*	P*	P*	P*	-	FD	-	-	-	<a href="#">Sec. 540.D.1.</a>
Food and Beverage:																	
Alcohol, Off-Sale	-	-	C*	C*	C*	C*	C*	C*	C*	C*	C*	-	FD	-	-	-	<a href="#">Sec. 540.D.1.</a> <a href="#">Sec. 540.D.2.a.</a> <a href="#">Sec. 540.D.2.b.</a>
Alcohol, On-Sale	-	-	C*	C*	C*	C*	C*	C*	C*	C*	C*	-	FD	-	-	-	<a href="#">Sec. 540.D.1.</a> <a href="#">Sec. 540.D.2.a.</a> <a href="#">Sec. 540.D.2.c.</a>
Alcoholic Beverage Manufacturing	-	-	-	-	-	-	-	P*	P*	P*	P*	-	FD	-	-	-	<a href="#">Sec. 540.D.1.</a>
Restaurant/Drinking Establishment	-	-	P*	P*	P*	P*	P*	P*	P*	P*	P*	-	FD	P*	P*	-	<a href="#">Sec. 540.D.1.</a>
Tasting Room	-	-	-	-	-	-	-	C*	C*	C*	C*	-	FD	-	-	-	<a href="#">Sec. 540.D.1.</a>
Entertainment Venue:																	
Indoor	-	-	-	-	C*	P*	P*	P*	C*	C*	-	P*	FD	P*	-	-	<a href="#">Sec. 540.D.1.</a>
Outdoor	-	-	-	-	C*	C*	C*	P*	C*	C*	-	P*	FD	P*	-	-	<a href="#">Sec. 540.D.1.</a>
Banking and Financial Services:																	
Bank or Finance Institution	-	P*	P*	P*	P*	P*	P*	P*	P*	-	-	-	FD	-	-	-	<a href="#">Sec. 540.D.1.</a>
Deferred Deposit Originator (Payday Lender) Office	-	-	-	-	-	-	-	-	-	-	-	-	FD	-	-	-	
Plasma Center	-	-	-	-	-	-	-	-	-	-	-	-	FD	-	-	-	
Medical Clinic	-	P*	P*	P*	P*	P*	P*	P*	-	-	-	P*	FD	-	-	-	<a href="#">Sec. 540.D.1.</a>
General Office	-	P*	P*	P*	P*	P*	P*	P*	P*	P*	P*	P*	FD	-	-	-	<a href="#">Sec. 540.D.1.</a>
Personal Services:																	
General	-	P*	P*	P*	P*	P*	P*	P*	-	-	-	P*	FD	-	-	-	<a href="#">Sec. 540.D.1.</a>
Massage	-	-	P*	P*	P*	P*	P*	P*	-	-	-	-	FD	-	-	-	<a href="#">Sec. 540.D.3.a.</a>
Fortuneteller	-	-	-	-	C*	C*	C*	C*	C*	-	-	-	FD	-	-	-	<a href="#">Sec. 540.D.1.</a>
Mortuary Services	-	-	-	-	C*	C*	P*	P*	P*	P*	-	-	FD	-	-	-	<a href="#">Sec. 540.D.1.</a>

KEY: P = Permitted; C = Conditional use permit; ; - = Not permitted; \* = Use standard applies;  
FD = Fairplex Overlay District; W = Wireless facility permit; CD = Cannabis Overlay District

Use	Use Module															Reference
	R1	RX1	CX1	CX2	CX3	CX4	CX5	IX1	I1	I2	I3	P1	P2	OS1	OS2	
<b>Retail:</b>																
General	-	p*	p*	p*	p*	p*	p*	p*	p*	p*	p*	C*	FD	-	-	<a href="#">Sec. 540.D.1.</a>
Swap Meet (Concession Mall)	-	-	-	-	-	p*	p*	-	p*	p*	p*	-	FD	-	-	<a href="#">Sec. 540.D.1.</a>
Large Format Retail	-	-	-	-	-	p*	p*	p*	p*	p*	p*	-	FD	-	-	<a href="#">Sec. 540.D.1.</a>
Outdoor sales	-	-	-	-	-	-	-	-	-	-	-	-	FD	-	-	
Hookah Lounge	-	-	-	-	-	-	C*	C*	C*	-	-	-	FD	-	-	<a href="#">Sec. 540.D.1.</a>
Smoke and Vape Shop	-	-	-	-	C*	C*	C*	C*	-	-	-	-	FD	-	-	<a href="#">Sec. 540.D.1.</a>
Pawnshop	-	-	-	-	-	-	-	-	-	-	-	-	FD	-	-	
Commercial Cannabis	-	-	CD*	-	-	CD*	-	CD*	-	-	CD*	-	FD	-	-	<a href="#">Sec. 540.D.1.</a>
Adult-Oriented Business	-	-	-	-	-	-	-	-	C*	C*	-	-	FD	-	-	<a href="#">Sec. 540.D.1.</a> <a href="#">Sec. 540.D.4.</a>
Indoor Self-Service Facility	-	-	-	-	-	-	-	-	-	-	-	-	FD	-	-	
<b>AUTO-ORIENTED COMMERCIAL</b>																
Ghost Kitchen	-	-	-	-	-	-	-	-	-	-	-	-	FD	-	-	
<b>Motor Vehicle Services:</b>																
General Service	-	-	-	-	-	-	-	-	-	-	-	-	FD	-	-	
Automated Car Wash	-	-	-	-	-	-	-	-	-	-	-	-	FD	-	-	
Hand Car Wash	-	-	-	-	-	-	-	-	-	-	-	-	FD	-	-	
Fueling Station	-	-	-	-	-	-	-	-	-	-	-	-	FD	-	-	
Electric Vehicle Charging Station (EVCS)	p*	p*	p*	p*	p*	p*	p*	p*	p*	p*	p*	p*	FD	p*	p*	<a href="#">Sec. 540.E.1.</a>
<b>Motor Vehicle Sales and Rental:</b>																
Vehicle Rental	-	-	-	-	-	-	-	-	-	-	-	-	FD	-	-	
Vehicle Sales	-	-	-	-	-	-	-	-	-	-	-	-	FD	-	-	
Drive-Through Facility	-	-	-	-	-	-	-	-	-	-	-	-	FD	-	-	
Tow Yard	-	-	-	-	-	-	-	-	-	-	-	-	FD	-	-	
<b>PRODUCTION-ORIENTED INDUSTRIAL</b>																
<b>Production:</b>																
General	-	-	-	-	-	-	-	C*	p*	p*	p*	-	FD	-	-	<a href="#">Sec. 540.F.1.</a>
Assembly Line	-	-	-	-	-	-	-	C*	p*	p*	p*	-	FD	-	-	<a href="#">Sec. 540.F.1.</a>
Animal Products Processing	-	-	-	-	-	-	-	-	-	-	-	-	FD	-	-	
Artisanal Manufacturing	-	-	-	-	-	-	-	p*	p*	p*	p*	-	FD	-	-	<a href="#">Sec. 540.F.1.</a>
<b>Food and Beverage Manufacturing:</b>																
Small	-	-	-	-	-	-	-	p*	p*	p*	p*	-	FD	-	-	<a href="#">Sec. 540.F.1.</a>
Large	-	-	-	-	-	-	-	-	-	-	-	-	FD	-	-	
Product Maintenance, Restoration, and Repair	-	-	-	-	-	-	-	p*	p*	p*	p*	-	FD	-	-	<a href="#">Sec. 540.F.1.</a> <a href="#">Sec. 540.F.2.</a>

KEY: P = Permitted; C = Conditional use permit; ; - = Not permitted; \* = Use standard applies; FD = Fairplex Overlay District; W = Wireless facility permit; CD = Cannabis Overlay District

Use	Use Module																Reference
	R1	RX1	CX1	CX2	CX3	CX4	CX5	IX1	I1	I2	I3	P1	P2	OS1	OS2		
<b>Media Production:</b>																	
Backlot/Outdoor Facility	-	-	-	-	-	-	-	-	P*	P*	P*	-	FD	-	-	<i>Sec. 540.F.1</i>	
Indoor Support Facility	-	-	-	-	-	-	-	-	P*	P*	P*	-	FD	-	-	<i>Sec. 540.F.1</i>	
Soundstage	-	-	-	-	-	-	-	-	P*	P*	P*	-	FD	-	-	<i>Sec. 540.F.1</i>	
Research and Development	-	-	-	-	-	-	-	P*	P*	P*	P*	-	FD	-	-	<i>Sec. 540.F.1</i>	
Pallet Yard	-	-	-	-	-	-	-	-	-	-	-	-	FD	-	-		
<b>DISTRIBUTION-ORIENTED INDUSTRIAL</b>																	
Product Distribution	-	-	-	-	-	-	-	-	P	P	P	-	FD	-	-		
Cold Storage	-	-	-	-	-	-	-	-	-	-	-	-	FD	-	-		
<b>FULLFILLMENT-ORIENTED INDUSTRIAL</b>																	
Microbusiness	-	-	-	-	-	-	-	-	P	P	P	-	FD	-	-		
Product Fulfillment	-	-	-	-	-	-	-	-	-	-	-	-	FD	-	-		
Product Transportation	-	-	-	-	-	-	-	-	-	-	-	-	FD	-	-		
<b>WASTE-ORIENTED INDUSTRIAL</b>																	
Automobile Dismantling Facility	-	-	-	-	-	-	-	-	-	-	-	-	FD	-	-		
<b>Waste:</b>																	
Construction and Demolition Waste Facility	-	-	-	-	-	-	-	-	-	-	-	-	FD	-	-		
Electronic Waste Facility	-	-	-	-	-	-	-	-	-	-	-	-	FD	-	-		
Food Waste Facility	-	-	-	-	-	-	-	-	-	-	-	-	FD	-	-		
Green Waste Facility	-	-	-	-	-	-	-	-	-	-	-	-	FD	-	-		
Hazardous Waste Facility	-	-	-	-	-	-	-	-	-	-	-	-	FD	-	-		
Medical Waste Facility	-	-	-	-	-	-	-	-	-	-	-	-	FD	-	-		
Solid Waste Facility	-	-	-	-	-	-	-	-	-	-	-	-	FD	-	-		
Waste Transfer Facility	-	-	-	-	-	-	-	-	-	-	-	-	FD	-	-		
<b>Recycling:</b>																	
Recycling Facility	-	-	-	-	-	-	-	-	-	-	-	-	FD	-	-		
Recycling Facility, Convenience	-	-	-	-	-	-	C	C	C	-	-	-	FD	-	-		
Recycling Manufacturer	-	-	-	-	-	-	-	-	-	C	C	-	FD	-	-		
Recycle, Recycling	-	-	-	-	-	-	-	-	-	-	-	-	FD	-	-		
Salvage Yard	-	-	-	-	-	-	-	-	-	-	-	-	FD	-	-		
Resource Extraction	-	-	-	-	-	-	-	-	-	-	-	-	FD	-	-		
<b>OUTDOOR-ORIENTED INDUSTRIAL</b>																	
<b>Storage:</b>																	
Workplace	-	-	-	-	-	-	-	-	-	-	-	-	FD	-	-		
Container	-	-	-	-	-	-	-	-	-	-	-	-	FD	-	-		
Vehicle	-	-	-	-	-	-	-	-	-	-	-	-	FD	-	-		

KEY: P = Permitted; C = Conditional use permit; ; - = Not permitted; \* = Use standard applies; FD = Fairplex Overlay District; W = Wireless facility permit; CD = Cannabis Overlay District

Use	Use Module																Reference
	R1	RX1	CX1	CX2	CX3	CX4	CX5	IX1	I1	I2	I3	P1	P2	OS1	OS2		
<b>URBAN AGRICULTURAL</b>																	
<b>Animal Keeping:</b>																	
Bees	P*	P*	P*	P*	P*	P*	P*	P*	P*	P*	P*	P*	FD	P*	P*	<a href="#">Sec. 540.G.1.a.</a> <a href="#">Sec. 540.G.1.b.</a>	
Kennel	-	-	-	C*	C*	C*	C*	C*	C*	C*	C*	-	FD	-	-	<a href="#">Sec. 540.G.1.a.</a> <a href="#">Sec. 540.G.1.c.</a>	
Domestic Animal, Small	P*	P*	P*	P*	P*	P*	P*	P*	P*	P*	P*	P*	FD	P*	P*	<a href="#">Sec. 540.G.1.a.</a> <a href="#">Sec. 540.G.1.d.</a>	
Domestic Animal, Large	P*	P*	P*	P*	P*	P*	P*	P*	P*	P*	P*	P*	FD	P*	P*	<a href="#">Sec. 540.G.1.a.</a> <a href="#">Sec. 540.G.1.e.</a>	
<b>Urban Farm:</b>																	
Small	P*	P*	P*	P*	P*	P*	P*	P*	P*	P*	P*	P*	FD	P*	P*	<a href="#">Sec. 540.G.2.</a>	
Large	C*	C*	C*	C*	C*	C*	C*	C*	C*	C*	C*	C*	FD	P*	P*	<a href="#">Sec. 540.G.2.</a>	
<b>Plant Cultivation:</b>																	
Outdoor Plant Nursery	P	P	P	P	P	P	P	P	P	P	P	P	FD	P	P		
Indoor Plant Nursery	P	P	P	P	P	P	P	P	P	P	P	P	FD	P	P		
<b>ACCESSORY</b>																	
Shed	P*	P*	P*	P*	P*	P*	P*	-	-	-	-	-	FD	P*	P*	<a href="#">Sec. 540.C.1.</a>	
Carport	P	P	-	-	-	-	-	-	-	-	-	-	FD	P	P		
Patio	P*	P*	P*	P*	P*	P*	P*	-	-	-	-	-	FD	P*	P*	<a href="#">Sec. 540.C.2.</a>	
Sunroom	P	P	P	P	P	P	P	-	-	-	-	-	FD	P	P		
Garage	P	P	-	-	-	-	-	-	-	-	-	-	FD	P	P		
Outdoor Dining Area	P*	P*	P*	P*	P*	P*	P*	P*	P*	P*	P*	P*	FD	P*	P*	<a href="#">Sec. 540.C.3.</a>	
Certified Farmers' Market	P*	P*	P*	P*	P*	P*	P*	P*	-	-	-	P*	FD	P*	P*	<a href="#">Sec. 540.C.4.</a>	
Swimming Pool	P*	P*	P*	P*	P*	P*	P*	-	-	-	-	P*	FD	P*	P*	<a href="#">Sec. 540.C.5.</a>	
Home Occupation	P*	P*	P*	P*	P*	P*	P*	P*	-	-	-	P*	FD	-	-	<a href="#">Sec. 540.C.6.</a>	
Cottage Food Operation	P*	P*	P*	P*	P*	P*	P*	P*	-	-	-	-	FD	-	-	<a href="#">Sec. 540.C.7.</a>	
Home-Based Business	P*	P*	P*	P*	P*	P*	P*	P*	-	-	-	-	FD	-	-	<a href="#">Sec. 540.C.8.</a>	
Accessory Commercial Unit (ACU)	P*	-	-	-	-	-	-	-	-	-	-	-	FD	-	-	<a href="#">Sec. 540.C.9.</a>	
Accessory Dwelling Unit (ADU)	P*	P*	P*	P*	P*	P*	P*	P*	-	-	-	-	FD	-	-	<a href="#">Sec. 540.C.10.</a>	
Junior Accessory Dwelling Unit (JADU)	P*	P*	P*	P*	P*	P*	P*	P*	-	-	-	-	FD	-	-	<a href="#">Sec. 540.C.11.</a>	
Outdoor Storage	-	-	-	-	-	-	-	P*	P*	P*	P*	-	-	-	-	<a href="#">Sec. 540.C.12.</a>	
Private Garden	P	P	P	P	P	P	P	P	-	-	-	P	FD	-	-		

KEY: P = Permitted; C = Conditional use permit; - = Not permitted; \* = Use standard applies; FD = Fairplex Overlay District; W = Wireless facility permit; CD = Cannabis Overlay District