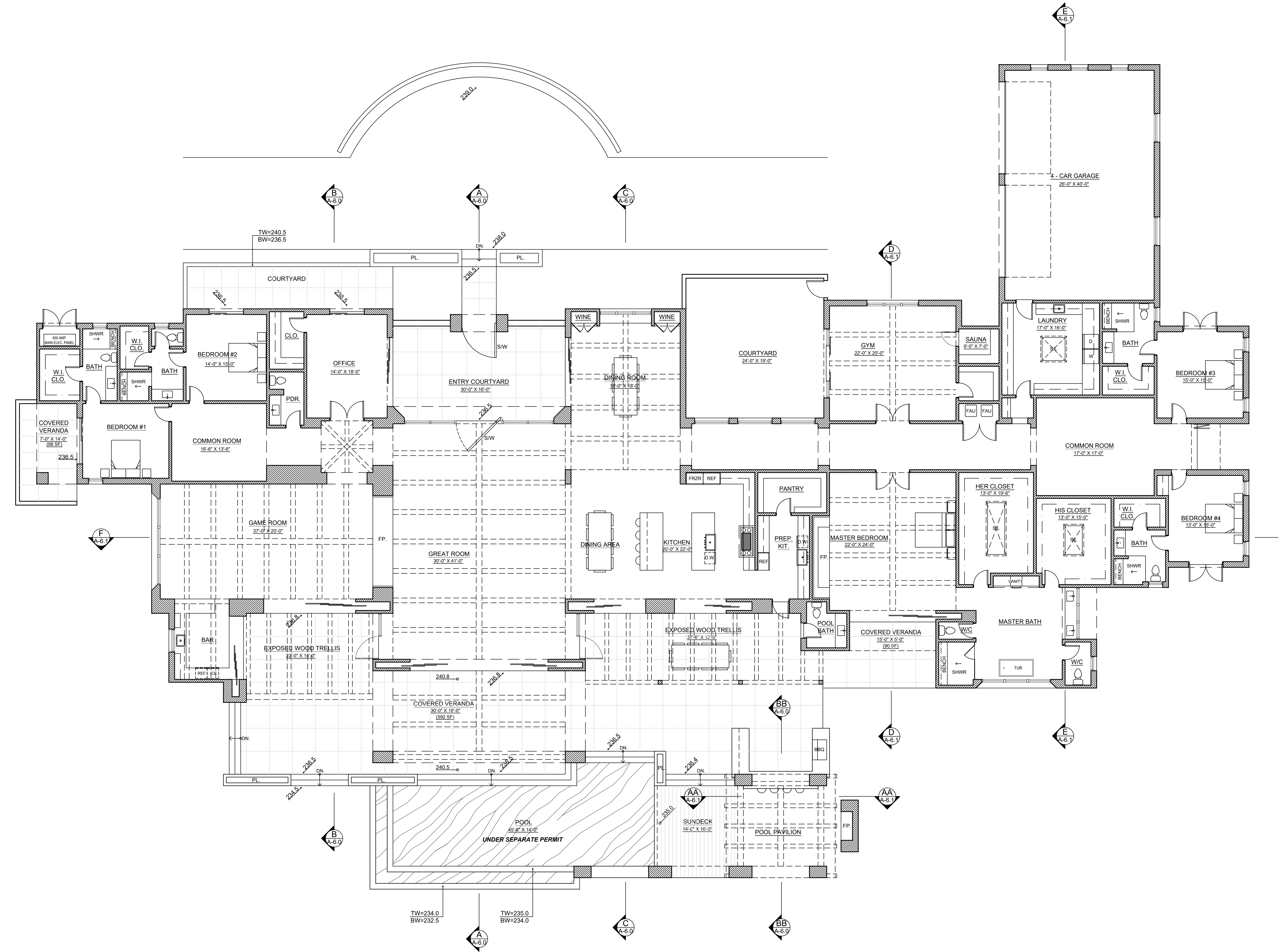
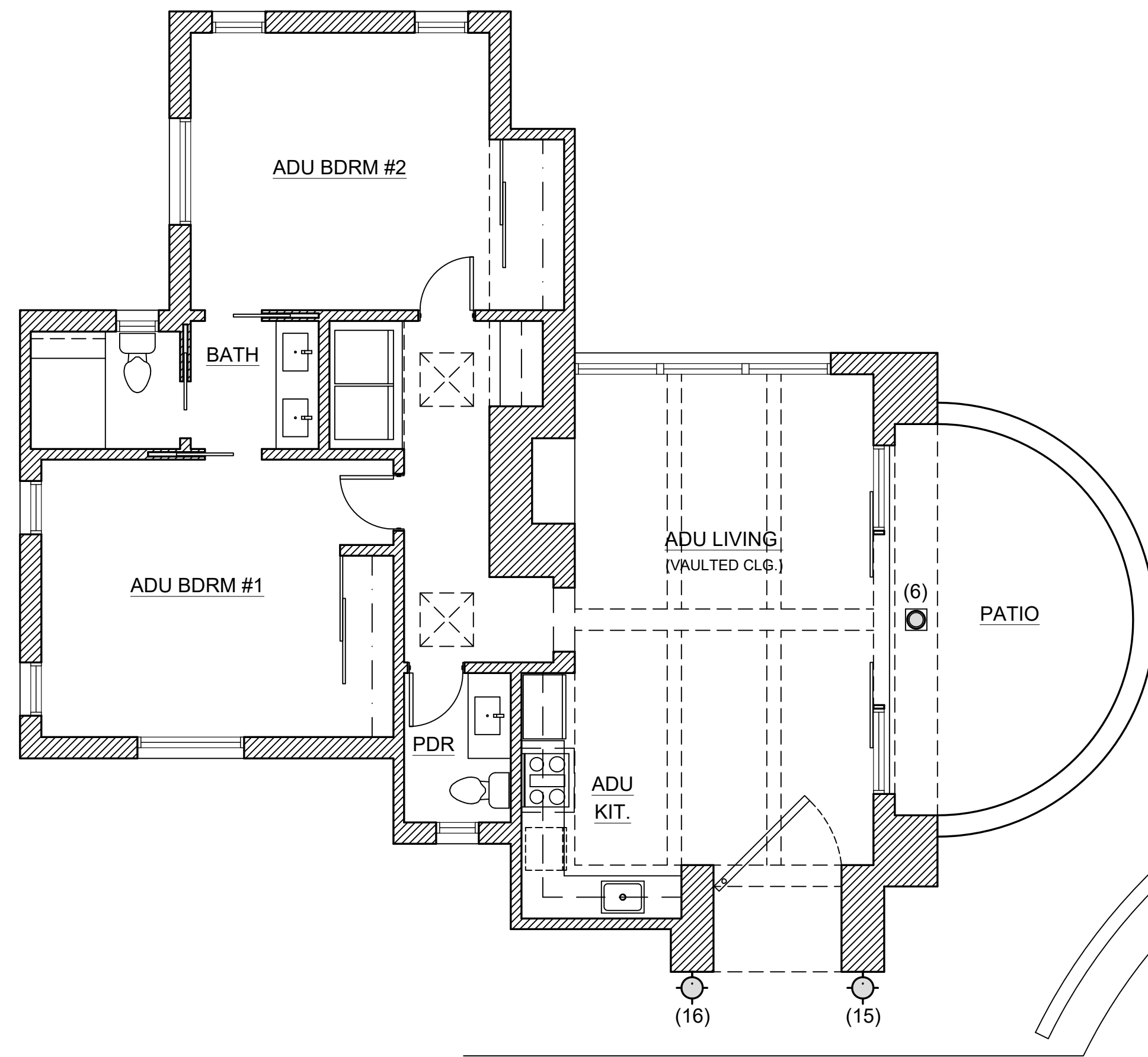


ADU FLOOR PLAN
 1/8" = 1' - 0"



MAIN HOUSE FLOOR PLAN
 1/8" = 1' - 0"



ADU OUTDOOR LIGHTING PLAN

3/16" = 1'-0"

SCONCE OUTDOOR LIGHTING


HUBBARDTON FORGE

Revere Large Outdoor Sconce
 Item # HKY1701821

Selected Options

Lamping: Incandescent (SKT)	Finish: Coastal Bronze (75)
Accent: Coastal Dark Smoke (77)	
Configured Item #: 302040-1025	
Smart String: 302040-547-75-77	

Image shown may not correspond to selected options



Specifications

Dimensions: Height 32.4"	Lamping Information: Socket Type medium
Width 12.4"	Bulb: Par30, 70-watt Max
Depth 4"	Number of Bulbs: 2 (not included)
Product Weight: 12.6 lbs	Location Rating: Outdoor Use
Mounting Height - Vertical: 28"	Safety Rating: UL/CUL listed

Options

Lamping: Incandescent (SKT)	Finish: White (22), Oil Rubbed Bronze (14), Natural Iron (20), Coastal Bronze (75), Coastal Dark Smoke (77), Coastal Burnished Steel (78), Coastal Black (85), Coastal Bronze (14)	Accent: Coastal Bronze (75), Coastal Burnished Steel (78), Natural Iron (20), Coastal Dark Smoke (77), White (22), Coastal Black (85), Oil Rubbed Bronze (14)
-----------------------------	--	---

Hubbardtonforge.com | customerservice@hfbforge.com | 888-828-4766
 Copyright © 2024 Hubbardton Forge. All Rights Reserved.

CEILING MOUNT OUTDOOR LIGHTING

REPUBLIC OUTDOOR PENDANT
 ITEM # HKY1701821


SELECTED OPTIONS

LAMPING: INCANDESCENT (SKT)
 FINISH: OIL RUBBED BRONZE (14)

SPECIFICATIONS

DIMENSIONS: HEIGHT 16.75", WIDTH 7", DEPTH LENGTH 6.1"
 PRODUCT WEIGHT 5.5 LBS
 ADJUSTABLE MAX. HANGING: 22.75" TO 76.75"

LAMPING INFORMATION:
 LAMP TYPE: INCANDESCENT (SKT)
 TOTAL LUMENS: 400.0
 BULB TYPE: 5W T9 E26
 COLOR TEMP: 3000(SOFT WHITE)
 AVERAGE LIFESPAN (HOURS): 15,000
 EQUIVALENT: HALOGEN, CFL OR LED BULB CAN BE USED




RECESSED OUTDOOR LIGHTING

4IN ROUND RECESSED RETROFIT / FLUSH MOUNT CEILING LIGHT
 ITEM NUMBER BEA1166973

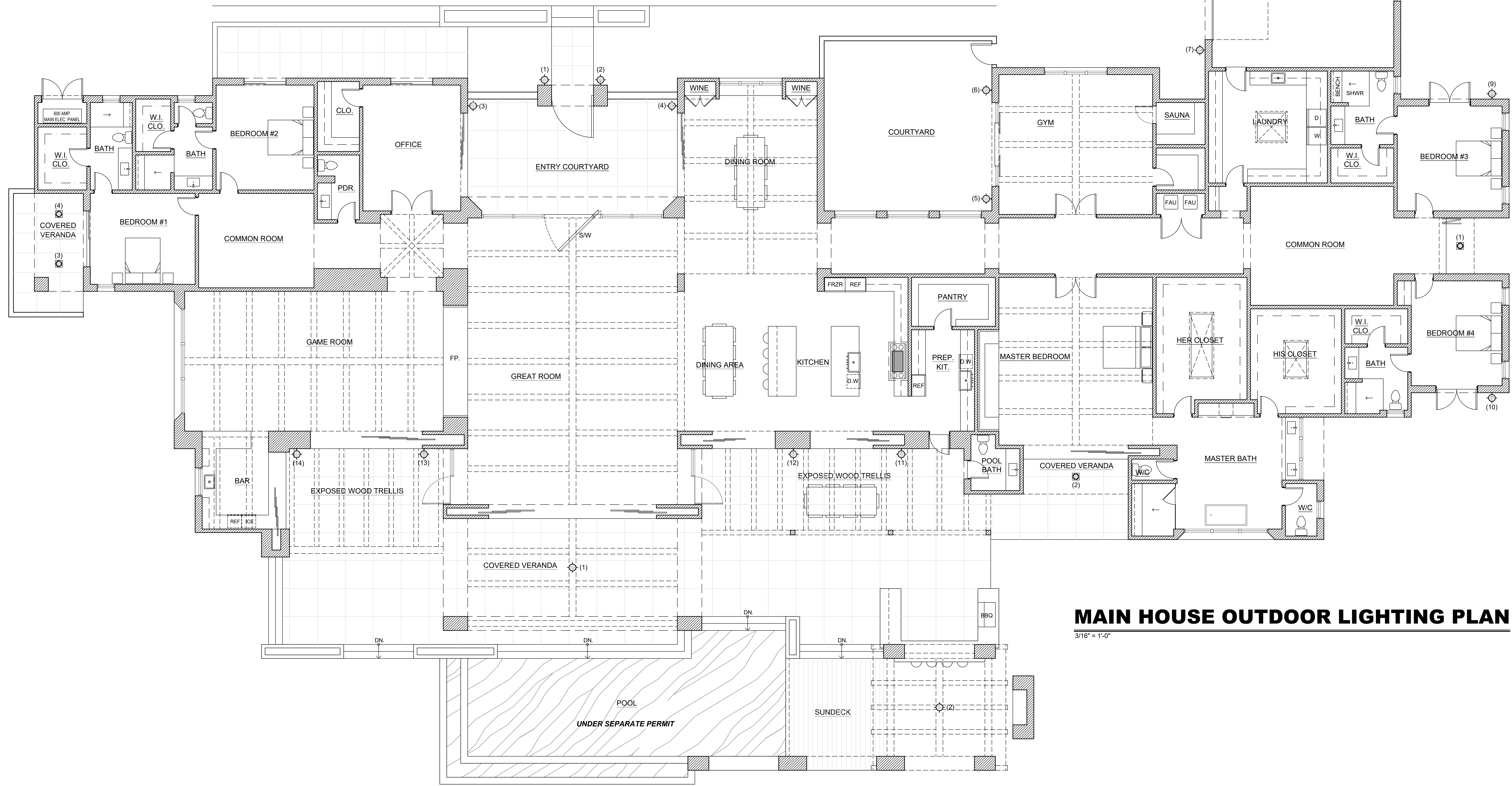
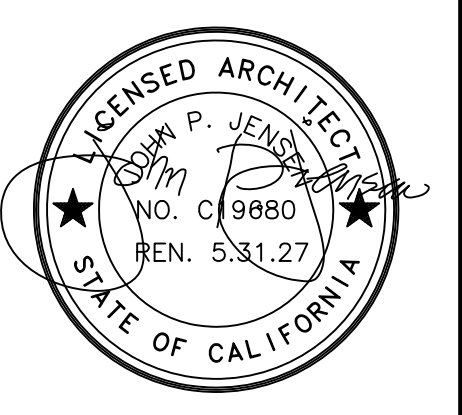
TRIM COLOR: N/A
BODY FINISH: MATTE WHITE
WATTAGE: 8W
DIMMER: LOW VOLTAGE ELECTRONIC
DIMENSIONS: 4.88"W X 1.13"H
LED MODULE INCLUDED: 1 X LED/8W/120V LED
LAMP: 1 X LED/8W/120V LED

TECHNICAL INFORMATION:
 LUMINOUS FLUX: 500 LUMENS
 LUMENS/WATT: 62.50
 LAMP COLOR: 3000 K
 BEAM ANGLE: 110°
 LAMP LIFE: 50000 HOURS
 FUNCTION: DOWNLIGHT
 CEILING TYPE: DRYWALL WITH TRIM
 HOUSING TYPE: RETRO KIT



PLOT DATE
 02.19.2026

REVISIONS

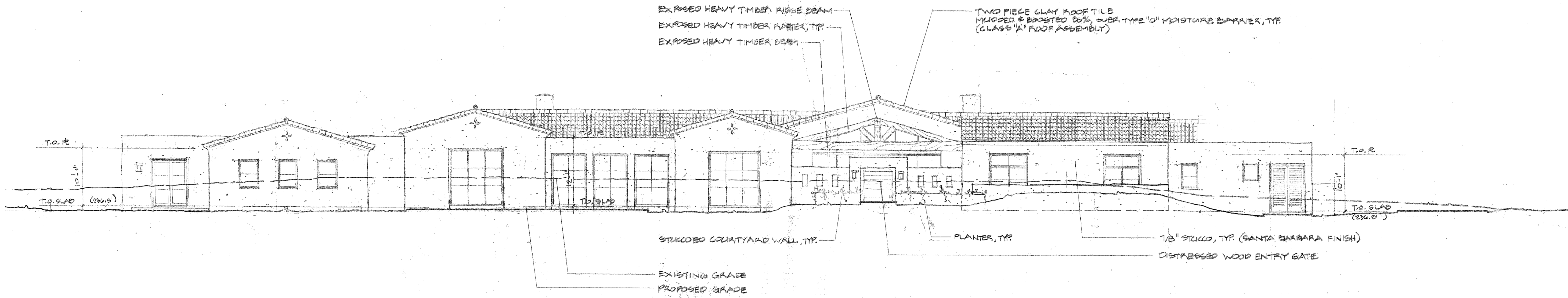


MAIN HOUSE OUTDOOR LIGHTING PLAN

3/16" = 1'-0"

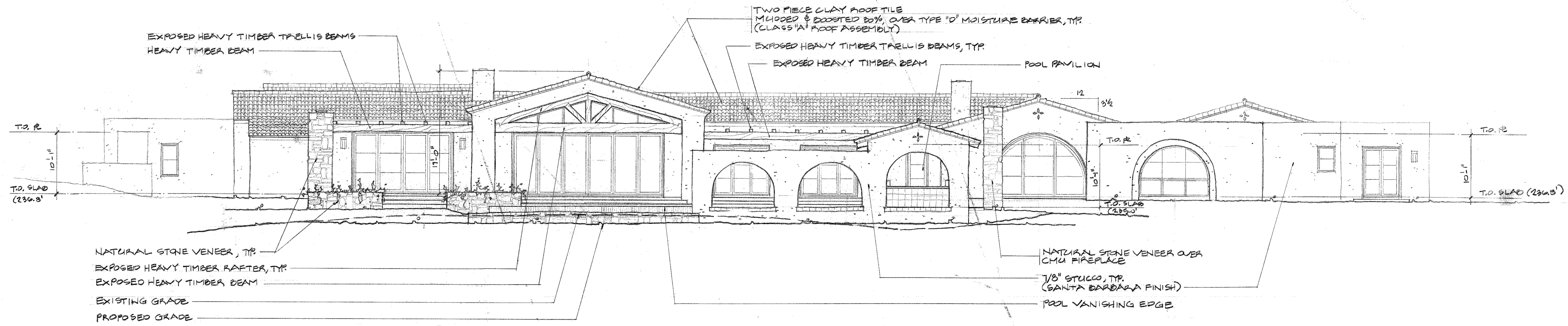
CUSTOM RESIDENCE
 8858 LAS COLINAS
 RANCHO SANTA FE, CA 92087
 APN: 267-080-15-00

A-2.2



EAST ELEVATION

SCALE: 1/8" = 1' - 0"

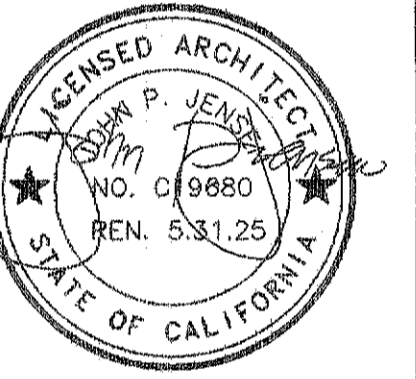


WEST ELEVATION

SCALE: 1/8" = 1' - 0"

PLOT DATE

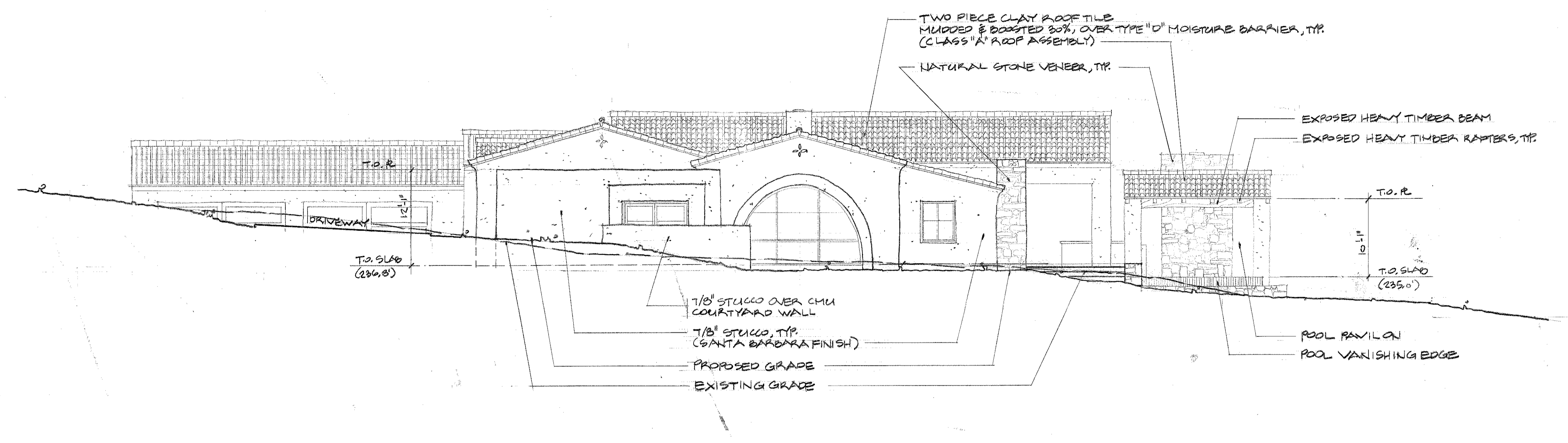
REVISIONS



CUSTOM RESIDENCE

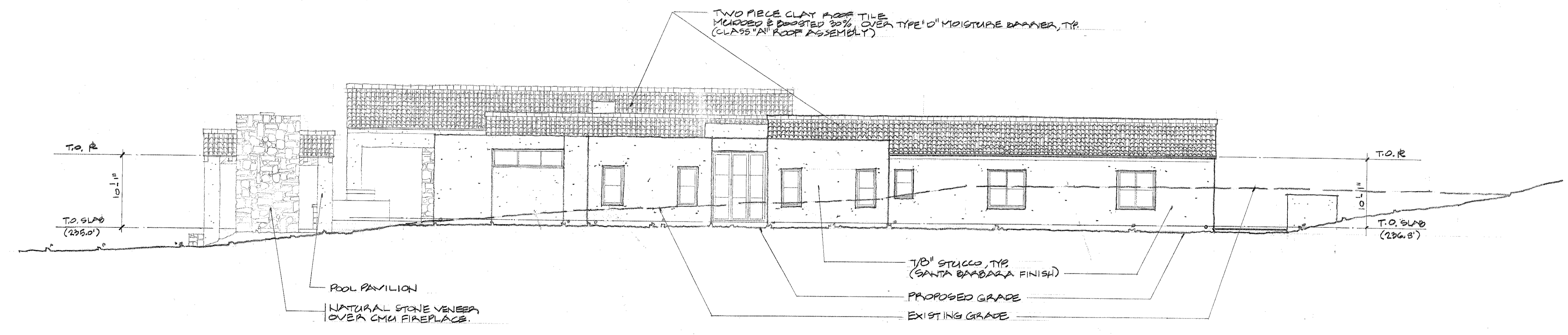
6858 LAS COLINAS
RANCHO SANTA FE, CA 92067
APN: 267-080-15-00

A-4



NORTH ELEVATION

SCALE: 1/8" = 1'-0"

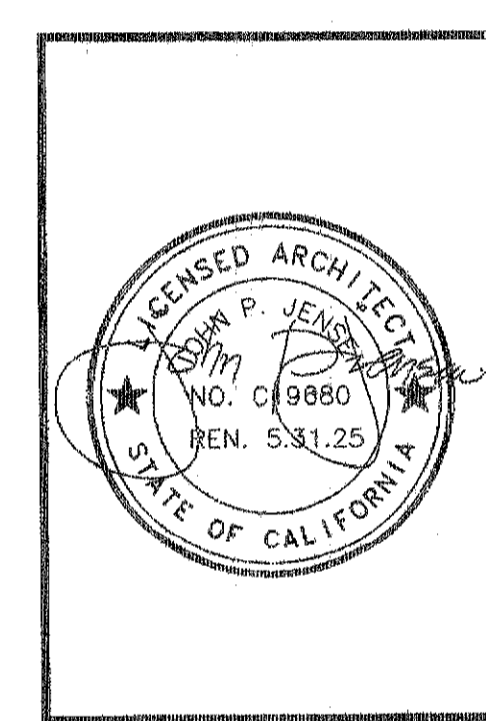


SOUTH ELEVATION

SCALE: 1/8" = 1'-0"

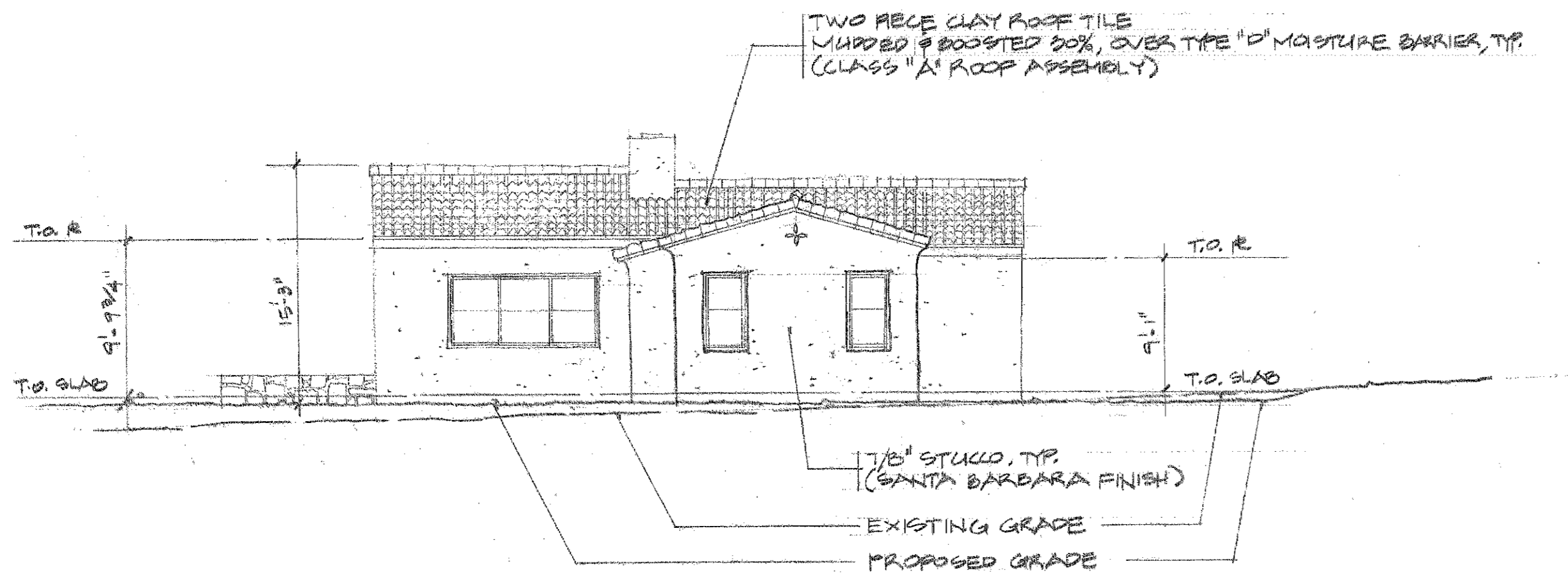
PLOT DATE

REVISIONS



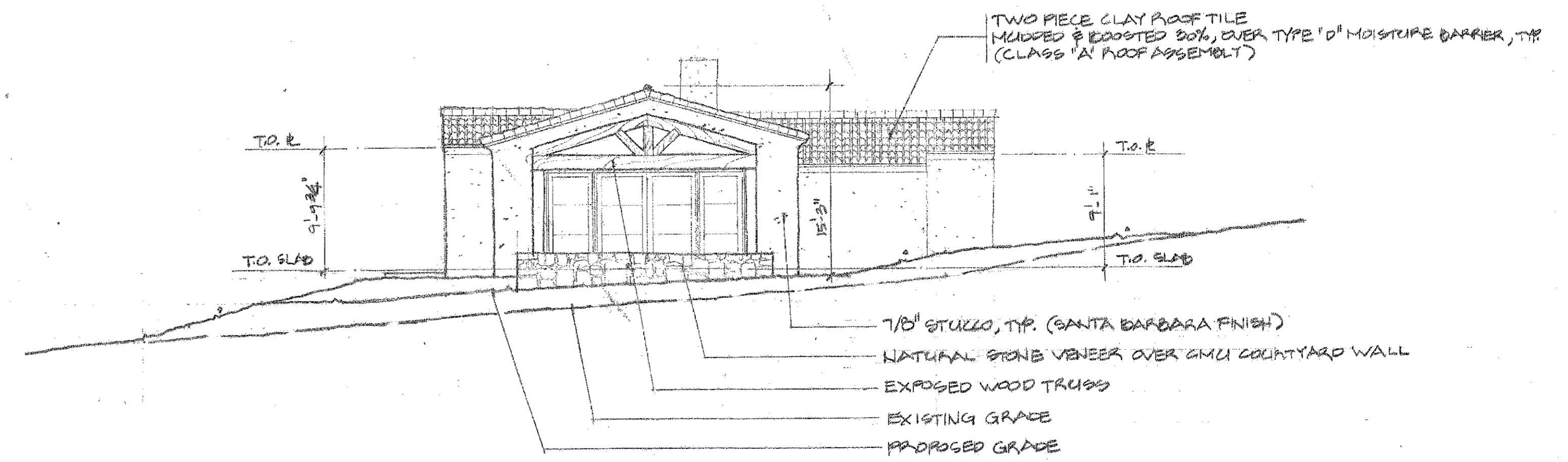
CUSTOM RESIDENCE

6858 LAS COLINAS
 RANCHO SANTA FE, CA 92067
 APN: 267-080-15-00



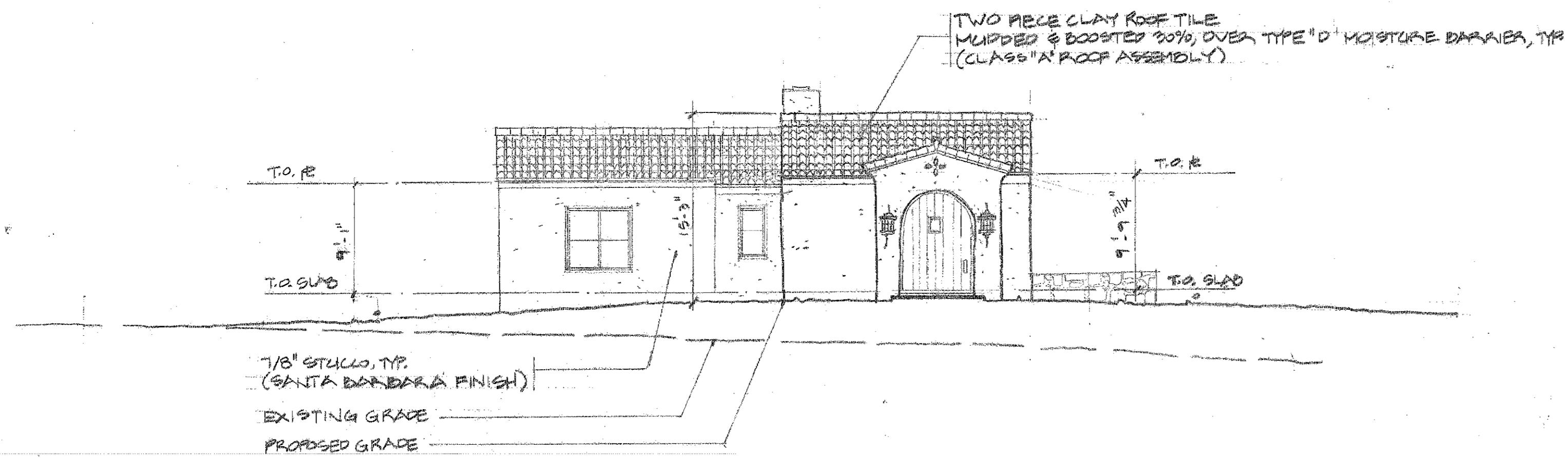
EAST ELEVATION

SCALE: 1/8" = 1' - 0"



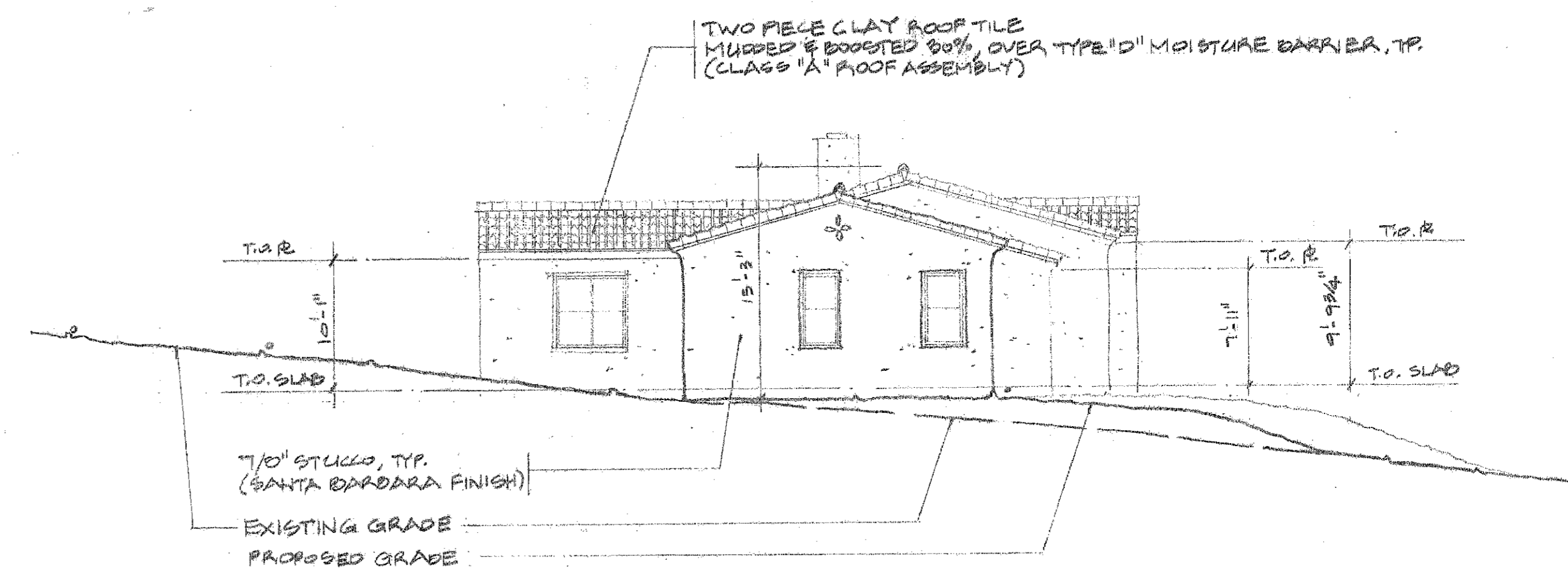
SOUTH ELEVATION

SCALE: 1/8" = 1' - 0"



WEST ELEVATION

SCALE: 1/8" = 1' - 0"



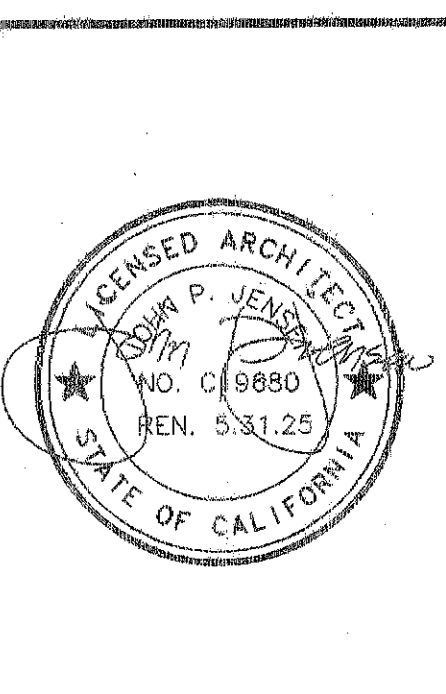
NORTH ELEVATION

SCALE: 1/8" = 1' - 0"



PLOT DATE
10.04.2024

REVISIONS



CUSTOM RESIDENCE
6858 LAS COLINAS
RANCHO SANTA FE, CA 92067
APN: 267-080-15-00

ADU ELEVATIONS

SCALE: 3/16" = 1' - 0"

A-4.2