

Welcome...

...to the luxury and comfort of Sawyer's Mill

Looking for something special in a family home? For new levels of comfort and luxury?

You've come to the right place. Sawyer's Mill in Temecula.

In this exceptional location, in the middle of a well-established neighborhood, Sawyer's Mill sets new standards for gracious living and value.



Surrounded by estate homes and adjacent to the Rancho California Sports Park, Sawyer's Mill offers a convenient location...close to schools and shopping, minutes from recreational and dining, freeway close and country quiet.

The homes at Sawyer's Mill are spacious and spectacular. Two single-level ranch-style designs and an inspired two-story plan each provide everything your family expects...and more.

From inviting island kitchens to oversized family rooms...pampering master bedroom suites to handy touches like offices, dens and guest suites...Sawyer's Mill is full of large and small design touches that will delight you today, and in the years to come.

As you explore the homes at Sawyer's Mill, imagine you and your family enjoying this enviable lifestyle. Then make the dreams come true.

Rilmington Communities - Dedicated to Quality

As a family-owned and operated building company, Rilmington Communities takes pride in the high levels of personal involvement that go into every community, and every home. Each detail is carefully considered, from designer touches and amenities to pricing and financing.

Rilmington Communities also offers decades of experience in all facets of the building industry, providing a high degree of knowledge and resources.

Company president Mickie Riley has been involved in the development of over half a billion dollars of residential property over the past 30 years and has an outstanding reputation for integrity and quality.

Every Rilmington neighborhood is built with pride to offer years of comfort, pleasure and value.



Residence Three

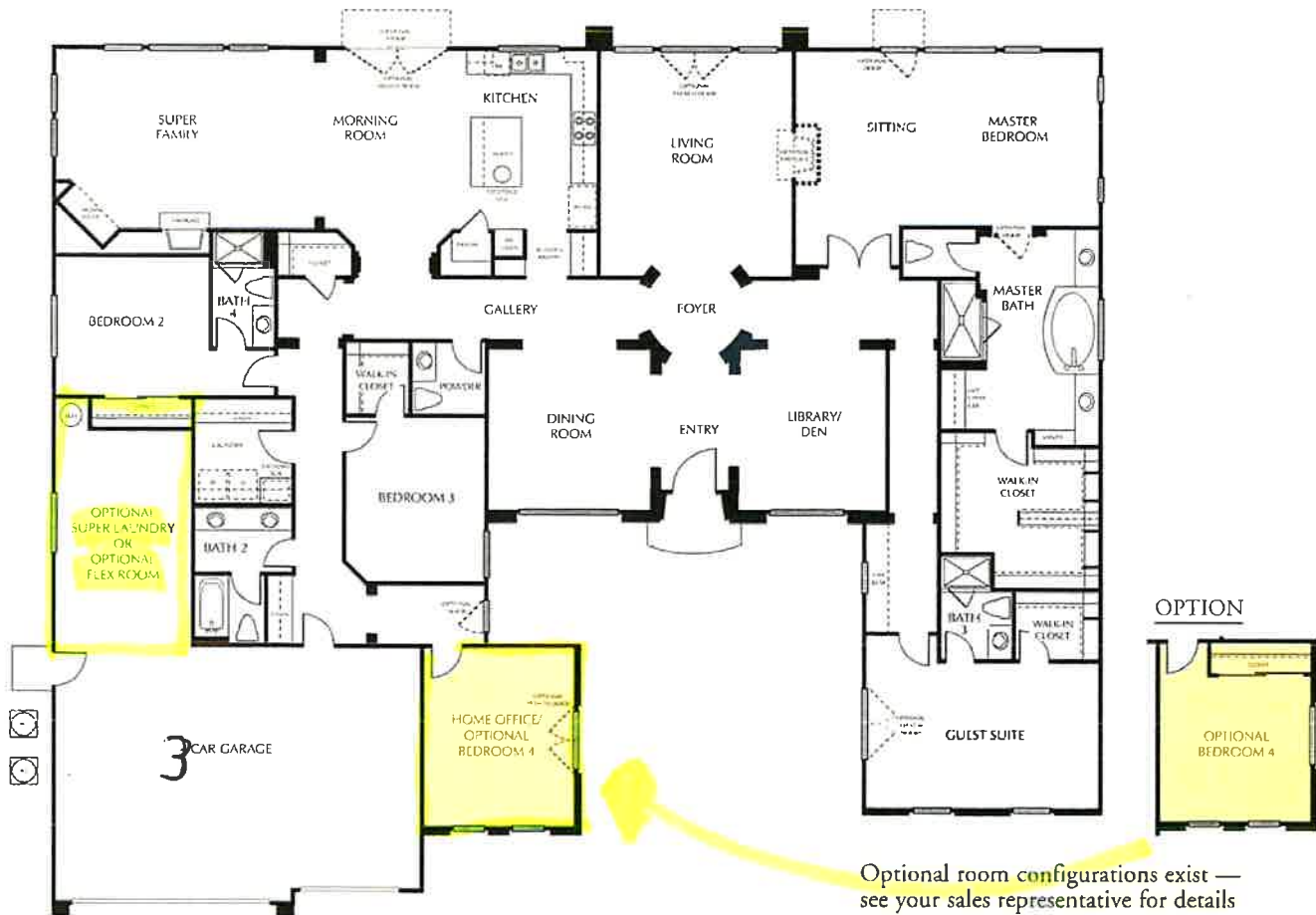
Three bedrooms
 Four-and-a-half baths
 Guest suite
 Library/den
 Office
 Four-car tandem garage
 Single level
 4,001 square feet
*Optional fourth bedroom;
 optional flex room;
 optional super laundry*



Elevation 3A



Elevation 3B



Features

First Impressions

- Northern European and Western Ranch design themes
- Distinctive cultured stone/brick veneer accents
- Siding and stucco exterior
- Fire retardant dimensional shingle and concrete tile roofs
- High pitched roofs with interior lofts (on selected plans)
- Appealing exterior accent and detail
- Charming courtyards and porches
- Welcoming covered front entries
- Stylish raised panel entry door with distinctive hardware
- Concrete driveway
- Easy-care vinyl windows with dual low e glazing
- Side and rear yard 3-rail vinyl fencing
- Electrical outlets at front and rear patios
- Service for gas barbecues
- Uniquely designed community



A Great Place to Call Home

- No Mello-Roos
- Private, secluded area
- Spacious lots
- Large back yards
- Back country and open space views
- Easy freeway access
- Close to many recreational facilities
- Close to all major shopping
- Convenient to schools and new library
- Close to major sports park

Beauty Within

- Decorative ceramic tile entryway
- Elegant formal dining area (per plan)
- Handsome oversized wood-burning fireplaces with ceramic tile surrounds
- Large entertainment niche to accommodate 60" television
- Nine-foot ceilings, with coffered and vaulted ceilings
- Rounded drywall corners
- Colonist raised-panel interior doors
- Unique pot shelves and decorator niches
- Interior laundry room with cabinets
- Linen closets and extra storage
- Designer selected light fixtures
- Distinctive hardware
- Prewired for telephone in bedrooms and kitchen
- Prewired for cable television in all bedrooms, family room and den
- Category-5 wiring
- Smoke detectors
- Copper electrical wiring
- Bulbs installed in all light fixtures for move-in convenience

Bathed In Luxury

- Ceramic tile countertops
- Kohler™ mini-widespread chrome finish fixtures in powder room and secondary bathrooms

Pleasant Dreams in Your Master Suite

- Elegant Roman style tub with temperature-balancing valve
- Separate glass enclosed shower
- Ceramic tile Pullmans and dressing table tops
- Custom oak cabinets
- Kohler™ widespread lever-handled faucets with chrome finish
- Walk-in closets
- Master retreats in selected plans
- Coffered ceilings

Cooking Up a Storm

- Impressive kitchen countertops
- Beautifully-designed custom oak cabinetry
- A full complement of GE™ white-on-white appliances:
 - Five-burner gas cook top
 - Self-clean double oven
 - Microwave
 - Dishwasher
- Large and handy pantry
- Oversized eating and serving island
- Coffered ceilings in dining room (per plan)
- Recessed ceiling lighting
- Convenient waste disposal
- Plumbed for icemaker

Save the Earth

- Energy-saving large capacity water heater with R-13 insulation
- Easy-care vinyl windows with dual low e glazing
- Weather-stripping around exterior doors and windows
- Energy-efficient glass fireplace doors
- R-13 insulation in all exterior walls; R-30 insulation in ceilings and attics
- Automatic set-back thermostat
- Pilotless electrical ignition on furnace and gas range
- Economical gas forced air heating
- Water-saving bath fixtures

