

# EXCLUSIVE LEASING MEMORANDUM



**RYAN TRAVIS**

760.983.2594 [RTravis@KurschGroup.com](mailto:RTravis@KurschGroup.com)

BRE # 01358790 Corporate BRE #01896143

12180 Ridgecrest Rd., Suite 232 Victorville, CA 92395

## Address

17525 Alder St.  
Hesperia, CA 92345

## APN

0415-271-03

## NOTES

Versatile Industrial / Warehouse lease space situated in the heart of Hesperia. Minutes from both Main St & Bear Valley Rd while also centrally located within the entire High Desert Region. Well-kept suites offer a small office area and open warehouse floor space with a roll-up door. Committed ownership maintaining in meticulous fashion this pristine commercial development. Join other successful businesses located here today

## ZONING

I2 - This zone is intended to provide for a full range of manufacturing, fabrication, assembly, warehousing and distribution use types associated with heavy industrial land uses, including outside manufacturing, warehousing and storage.

# Asking Price

\$1.25/psf for suites under 1,500 sqft.

\$1.00/psf for suites over 1,500 sqft.

\$0.95/psf for suites over 5,000 sqft.

\* \$.05 for trash/water

ALDER ST.

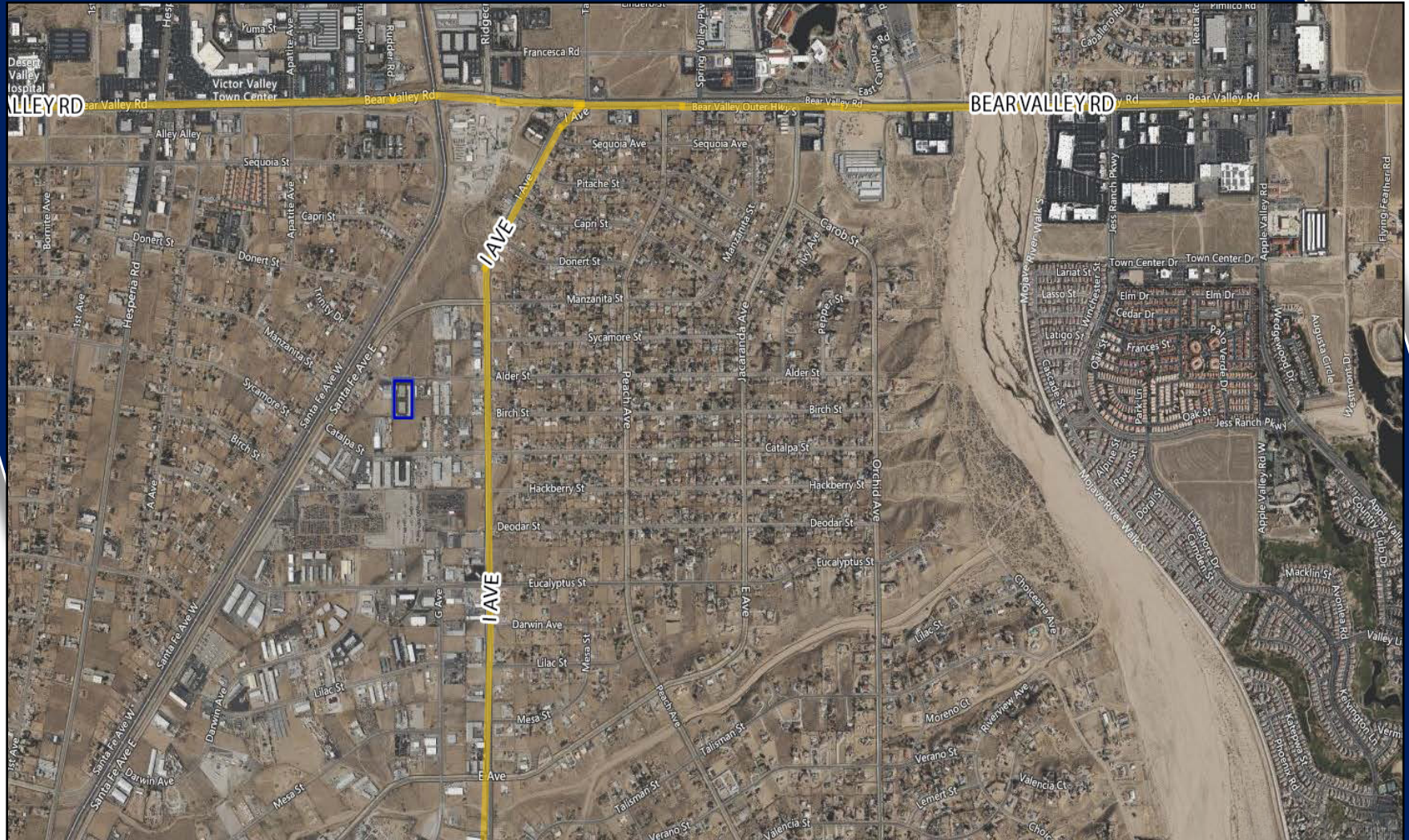


Available

Suite 6	960 sf
Suite 8	960 sf
Suite 16	2,640 sf
Suite 24 & 36	5,280 sf
Suite 28	2,640 sf
Suite 47	960 sf



# Aerial



The information contained herein has been secured from sources we believe to be reliable. Kursch Group, Inc. and/or agents involved, make no representations or warranties, expressed or implied, as to the accuracy of the information. All information should be verified with another outside agency, government entity or property owner as applicable.