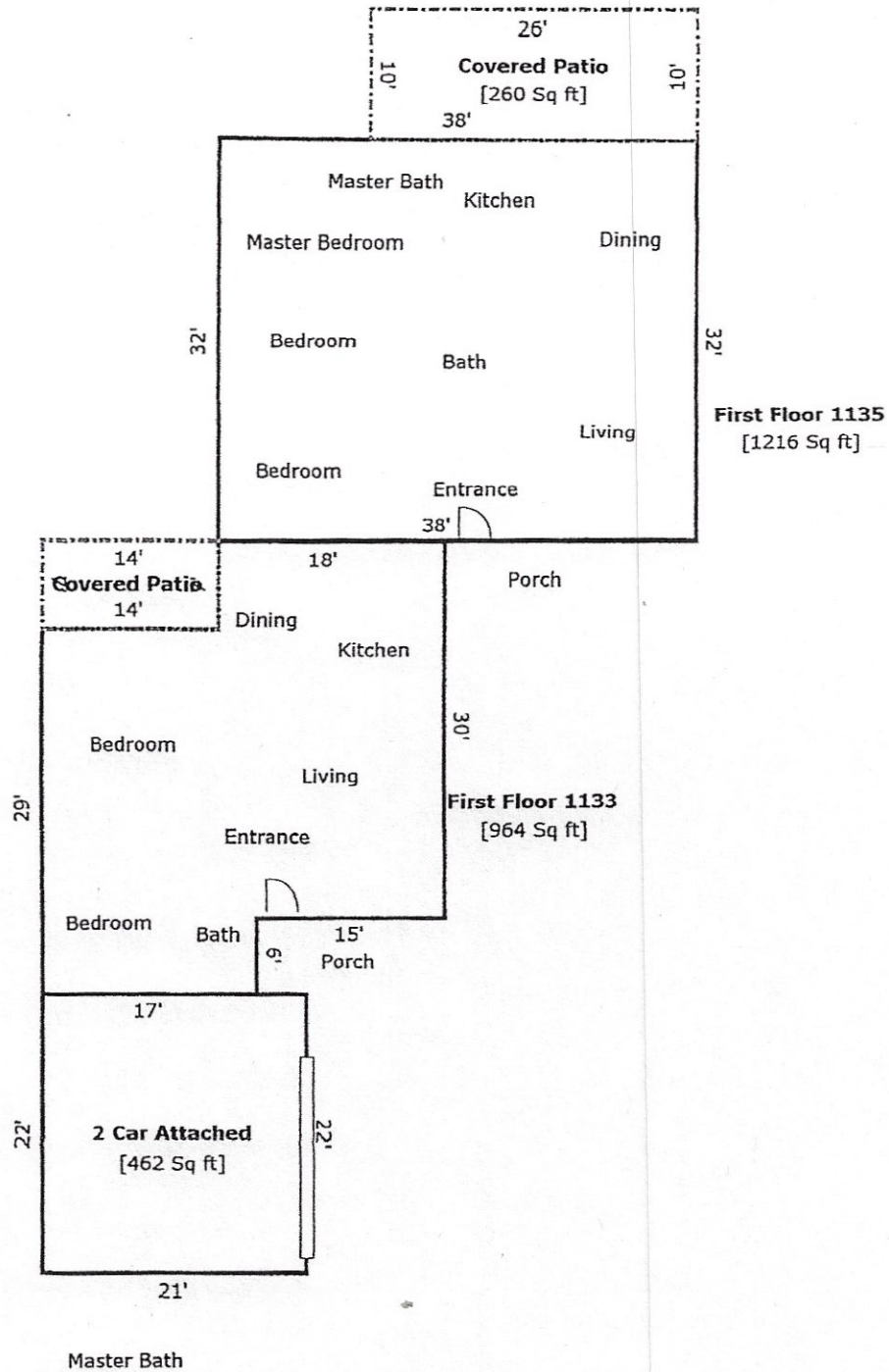


# 1133 & 1135 GARDENA RD.



TOTAL Sketch by a la mode

### Area Calculations Summary

		Calculation Details
<b>Living Area</b>		
First Floor 1135	1216 Sq ft	$32 \times 38 = 1216$
First Floor 1133	964 Sq ft	$30 \times 15 = 450$ $17 \times 29 = 493$ $7 \times 3 = 21$
<b>Total Living Area (Rounded):</b>	<b>2180 Sq ft</b>	
<b>Non-living Area</b>		
Covered Patio	260 Sq ft	$26 \times 10 = 260$
2 Car Attached	462 Sq ft	$22 \times 21 = 462$
Covered Patio	98 Sq ft	$7 \times 14 = 98$