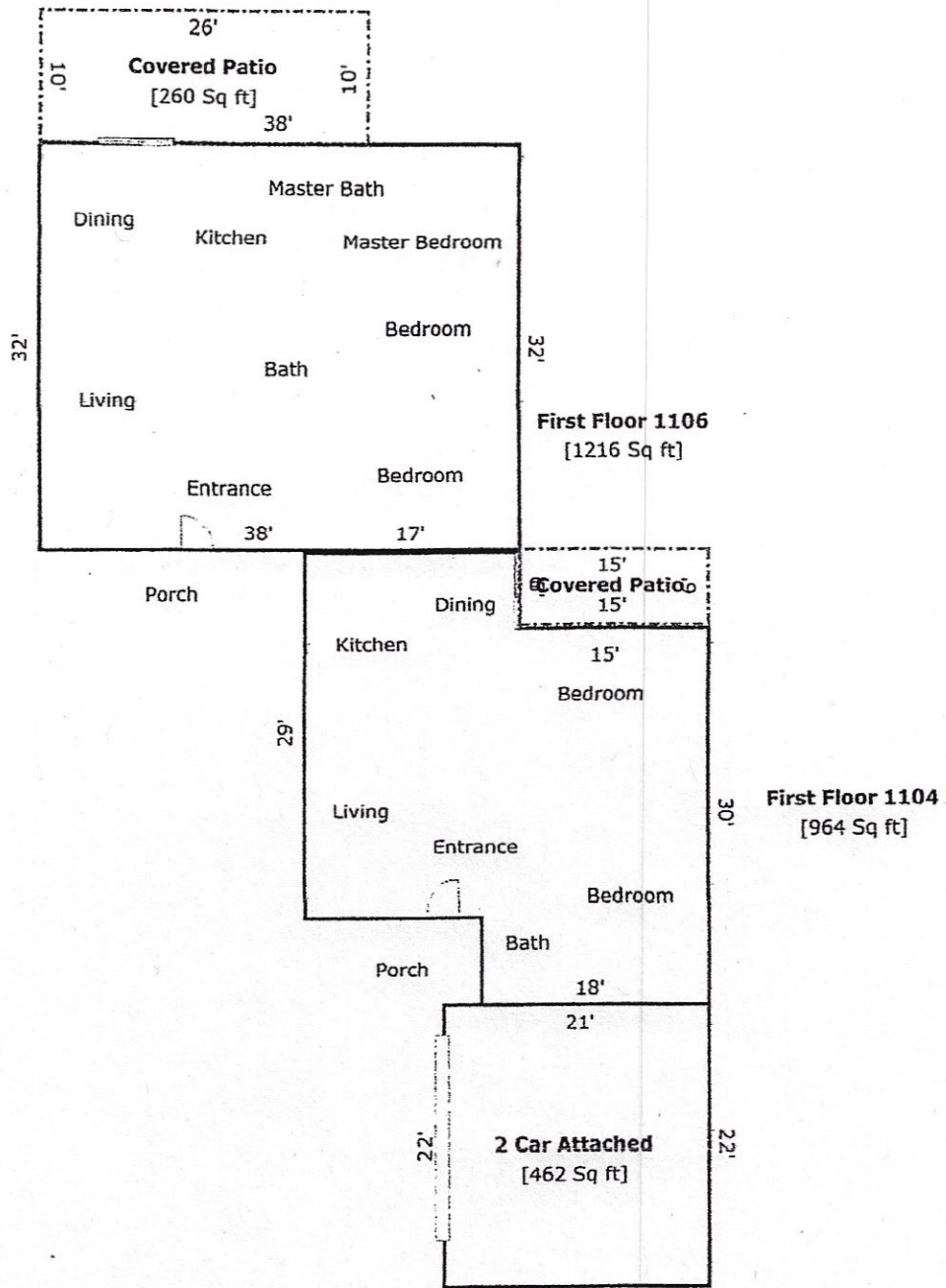


1104 & 1106 GARDENA RD.



TOTAL Sketch by a la mode

Area Calculations Summary

Area	Area (Sq ft)	Calculation Details
Living Area		
First Floor 1104	964 Sq ft	30 × 15 = 450 17 × 29 = 493 7 × 3 = 21
First Floor 1106	1216 Sq ft	32 × 38 = 1216
Total Living Area (Rounded):	2180 Sq ft	
Non-living Area		
Covered Patio	90 Sq ft	6 × 15 = 90
2 Car Attached	462 Sq ft	22 × 21 = 462
Covered Patio	260 Sq ft	26 × 10 = 260