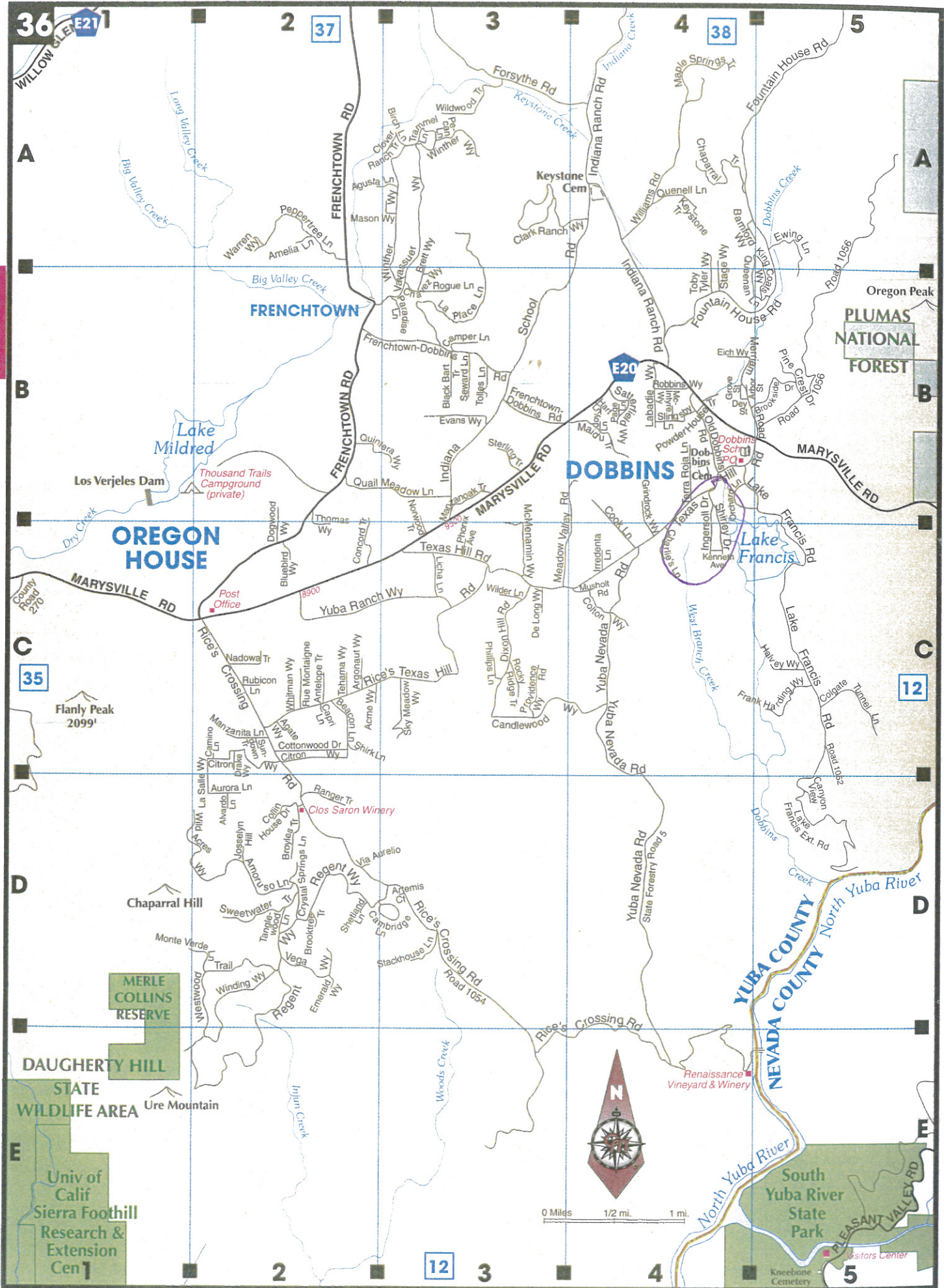


DETAIL  
MAPS

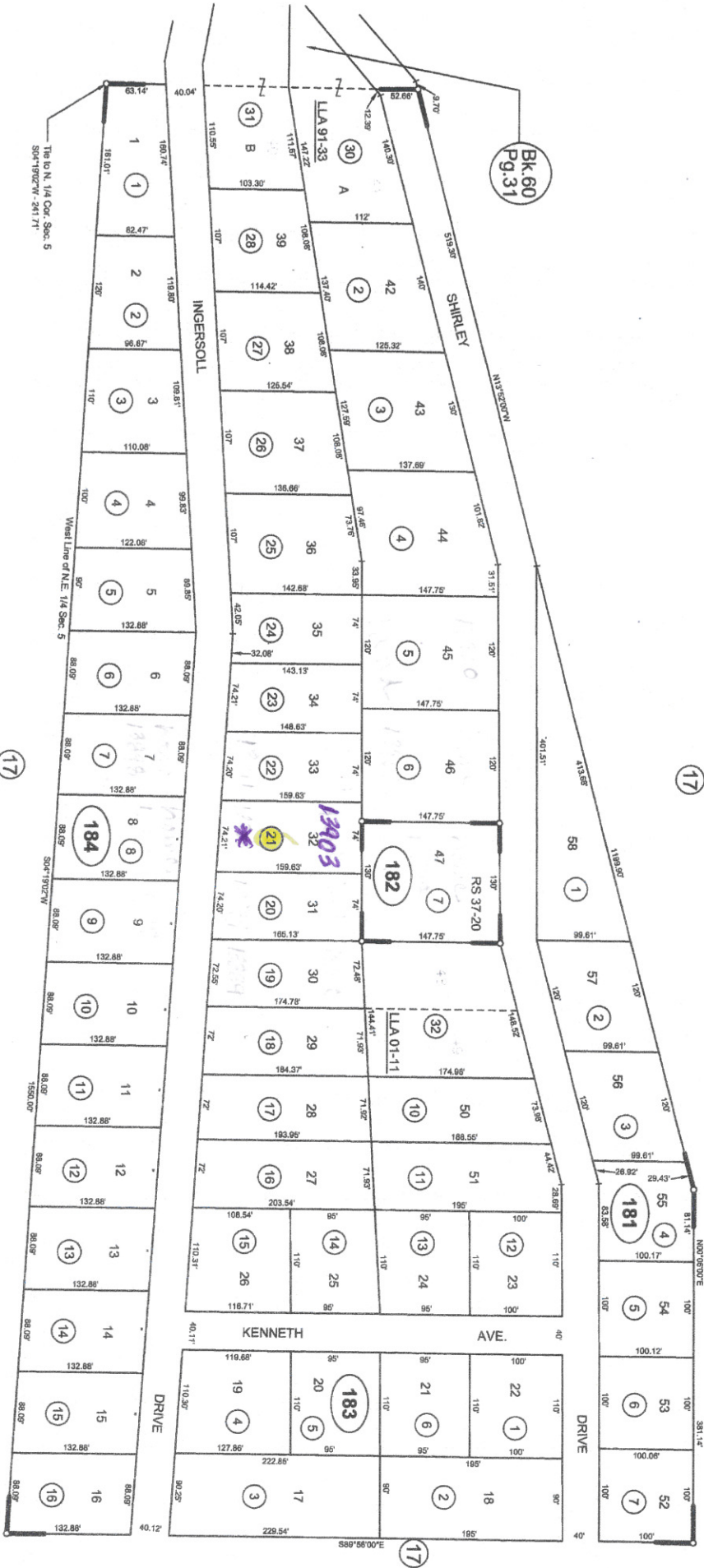
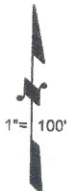


NOTE: This map was prepared for assessment purposes only, and is not intended to illustrate legal building sites or establish precedence over local ordinances. Official information concerning size or use of any parcel should be obtained from recorded documents and local governing agencies.

**TRACT NO. 100**  
**POR. OF SEC. 5, T.17N., R.7E., M. D. B. & M.**

Tax Area Code  
 64-056

**48-18**



R.S. - Bk. 37, Pg. 20 (lot 47)  
 R.S. - Bk. 6, Pg. 29 (Tr. 100) (L.L.A. 91-33) (L.L.A. 01-11)

NOTE - Assessor's Block Numbers Shown in Ellipses  
 Assessor's Parcel Numbers Shown in Circles

Formerly 4-28  
 Assessor's Map Bk. 48, Pg. 18  
 County of Yuba, Calif.  
 Year-3/81

03/07  
 APR 09 2007