

Included Features

Energy Efficiency

- LED surface-mount lighting throughout
- Central heating and air conditioning with programmable, night setback, digital thermostat
- Dual glazed vinyl windows
- Water efficient toilets
- Water efficient plumbing
- Low VOC interior paint
- Prewired for electrical vehicle charging station

Exceptional Interiors

- Kwikset® Breton brushed nickel handle door hardware throughout
- Moen® polished chrome plumbing fixtures
- Dal Quartz® counters with 4" backsplash at secondary baths
- Elongated toilets in all bathrooms
- Rectangular undermount sinks at all baths
- Wall mounted handrails with satin nickel brackets
- Most homes come with a 3-car garage*

Spacious Gourmet Kitchens

- Dal Quartz® countertops with 6" backsplash and full backsplash at range
- Spacious kitchen island with pendant prewires and trash recycle bin (per plan)
- Front control, LG® stainless steel, slide-in gas range with convection and 5 burners
- Stainless steel LG® Microwave and hood stainless steel combination with LED display
- Stainless steel LG® top control dishwasher with quadwash
- White thermofoil shaker style cabinets with satin nickel pulls
- Stainless steel undermount single bowl sink with Moen® pull down, stainless steel spray faucet
- InSinkErator ½ horsepower garbage disposal

Inspired Primary Suites

- Dal Quartz® counters with 4" backsplash
- 3-wall composite, subway tile shower with seat
- Chrome trim with ¼" clear tempered glass at shower
- Dual rectangular undermount sinks
- Polished chrome hardware
- Primary baths with separate elongated toilets
- Walk-in closets

Refined Exteriors

- Contemporary style architecture
- Illuminated crystal address plaque with matching porch light

Smart Home Features

Throughout each residence, you'll discover hand-selected features and finishes to make life better than ever.

- LG® smart Wi-Fi enabled range
- Honeywell Lyric® smart thermostat
- Ring® Video Doorbell Pro
- Security alarm system installed standard
- Leviton switches
- Wi-Fi enabled garage door opener

Personalized Enhancements

Persimmon offers many opportunities to personalize your home with a variety of options and upgrades. Please consult a New Homes Sales Counselor for details.

*On select homes.



About Brandywine Homes

A family-owned and operated homebuilder and community developer, Brandywine Homes is proud to celebrate over 30 years of developing land and providing quality homes for Southern Californians. We pride ourselves on attracting and retaining the industry's most talented and dedicated employees whose expertise reflects that of our principals.

Our broad capabilities can be seen in the wide variety of housing we have successfully developed — from inspired townhome collections to luxurious, single family homes to semi-custom, estate-sized homes. We offer the diversity necessary to build homes in communities throughout Southern California, from new suburban developments to urban infill locations.

At the foundation of every Brandywine Home is our utmost dedication to excellence. A recognized leader in challenging infill projects, Brandywine continues to revitalize a number of Southern California's oldest and most established towns, rich in history. We build homes that respect and complement the heritage, values and architectural integrity of existing neighborhoods and the people who live there — while also making a positive contribution to the community.

design by P11.com



Persimmon



WELCOME HOME TO PERSIMMON

Welcome to a new place to thrive in friendly Pomona. Persimmon is an exciting, new townhome community for those seeking a fresh approach to life. Created with an eye for design and a focus on functionality, you'll find yourself at home.



909-552-6088
NewHomesPomona.com

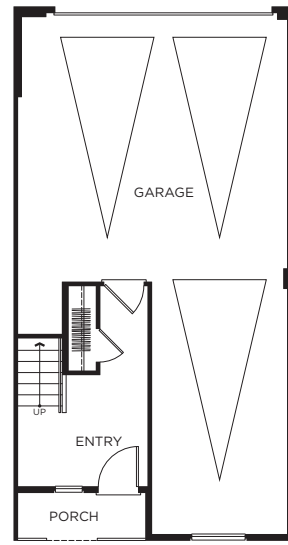
675 E. Mission Blvd.
Pomona, CA 91766

©2025 Brandywine Homes. All Rights Reserved. Brandywine Homes reserves the right to change sales prices, delete or modify floor plans, elevations and specifications without notice or obligation. Models do not reflect racial preference. All renderings are artist's concept. DRE#01381133

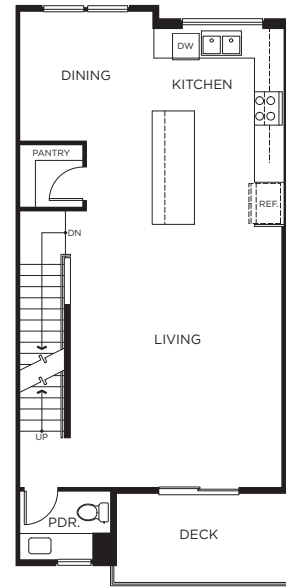


PLAN A

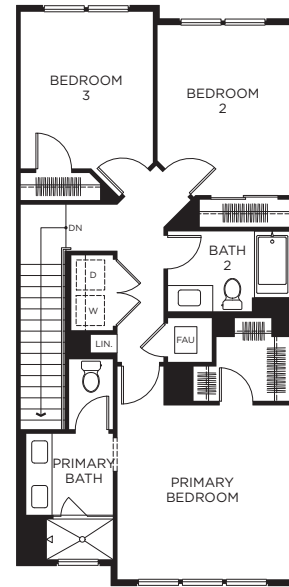
3 Bedrooms • 2.5 Baths
Approx. 1,634 Sq. Ft.



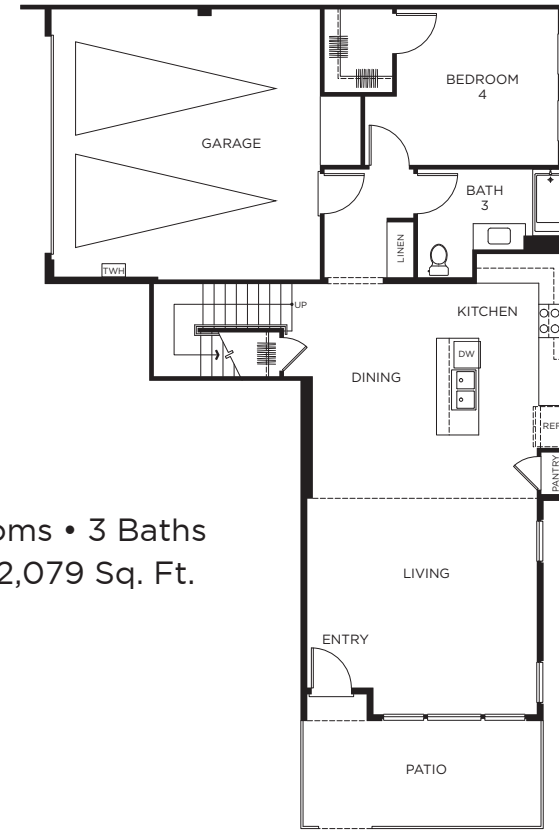
FIRST FLOOR



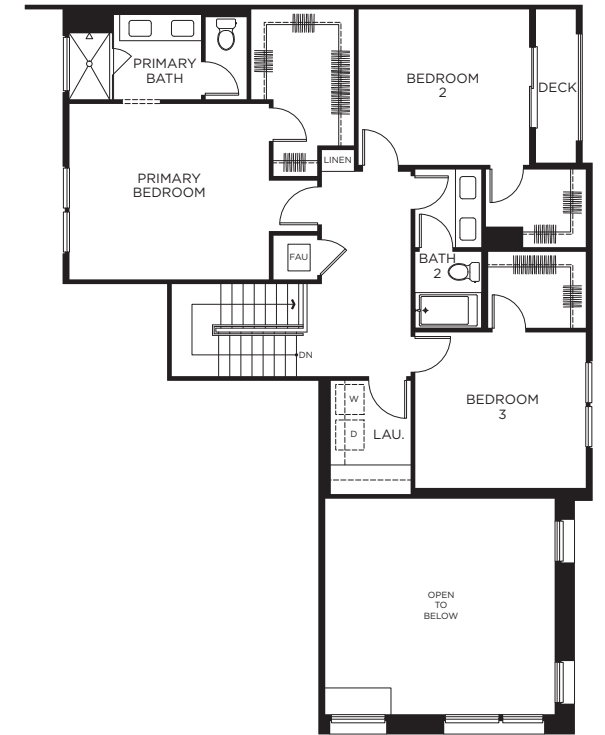
SECOND FLOOR



THIRD FLOOR



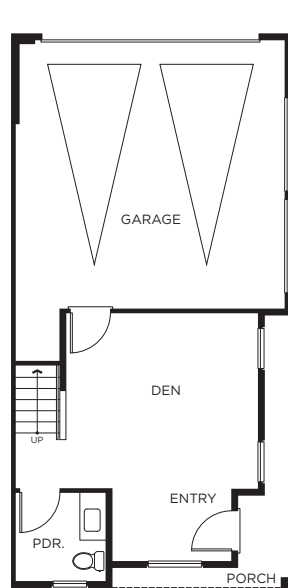
FIRST FLOOR



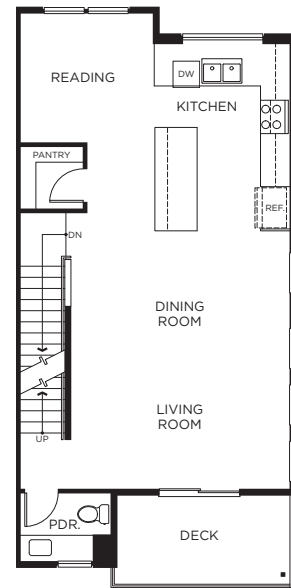
SECOND FLOOR

PLAN B

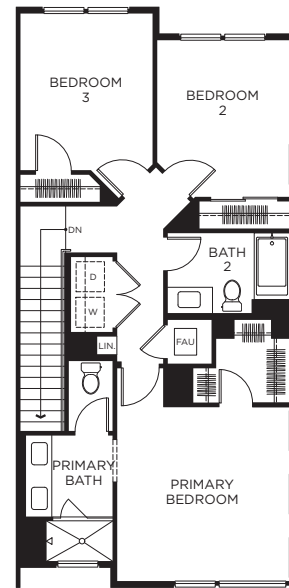
4 Bedrooms • 3 Baths
Approx. 2,079 Sq. Ft.



FIRST FLOOR



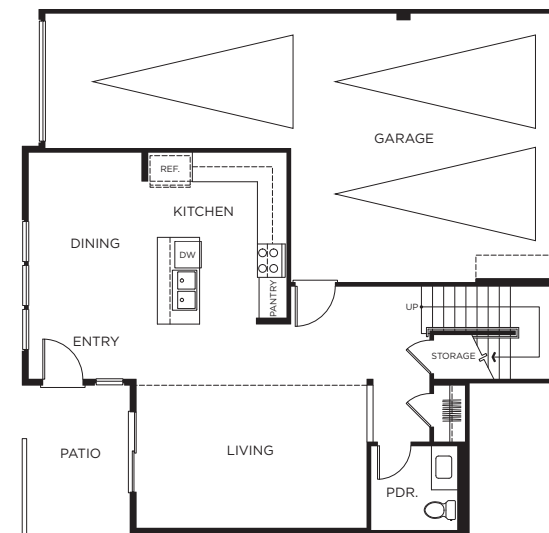
SECOND FLOOR



THIRD FLOOR

PLAN A2

3 Bedrooms + Den
2 Baths + 2 Powders
Approx. 1,821 Sq. Ft.



FIRST FLOOR



SECOND FLOOR

PLAN C

3 Bedrooms + Loft • 2.5 Baths
Approx. 1,810 Sq. Ft.



Create the life you want

Design makes a difference, and you'll fall in love with it all here! We've included everything on your must-have list. You'll feel instantly right at home — exactly how life should be.