



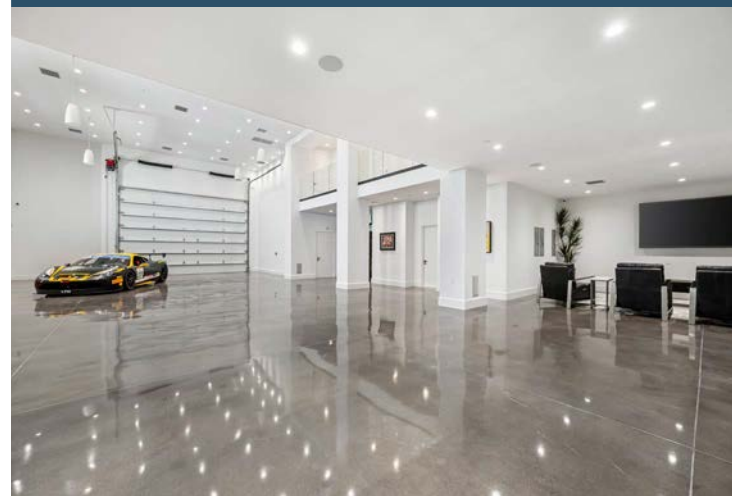
## 86804 ROGERS WAY (VILLA #19), THERMAL, CA

### FEATURES

- Sophisticated and luxurious fully furnished approx. 9,203 SF\* Villa with 4 bedrooms and 5.5 bathrooms
- Fully automated three-story smart home with elevator, heated bathroom floors, high-end appliances and fixtures, and two laundry rooms
- Highly desired location on the South Palm Track with multiple balconies and large viewing deck/covered patio with misters, built-in BBQ, firepit, and panoramic views
- Oversized garage with polished concrete floors, space for several cars, and attached locker room with full bathroom
- The Thermal Club Motorsports facility has 5 miles of private pavement and luxury amenities including two clubhouses, three restaurants, meeting and banquet building, full service spa, fitness center, a highly appointed 48-villa hotel, tennis, pickleball, kids club, karting, racing, driver training, storage and repair facilities
- Purchasing a Villa at The Thermal Club requires purchasing a membership

**PRICE: \$6,495,000**

### VIEW OF THE GARAGE



5/30/25 JC



**SUSAN HARVEY**

DRE #00957590  
susan@dppllc.com  
Cell: 760.250.8992



**EMILY HARVEY**

DRE #02229612  
emily@dppllc.com  
Cell: 760.636.3500

**DesertPacificProperties.com 760.360.8200**



- **Comments:** Step into luxury at 86804 Rogers Way, inside the prestigious and exclusive Thermal Club, Southern California’s premier, private motorsports club. This stunning, turnkey villa is the pinnacle of luxury living meets the thrill of the track. From the exterior, the architecture is bold and contemporary with clean lines, sweeping glass walls, and expansive terraces. Oversized retractable glass doors provide uninterrupted panoramic views that can be enjoyed from inside or out.

The villa features porcelain tile floors, a chef’s kitchen, elevator, and meticulous attention to detail throughout. The kitchen is a true masterpiece with cristallo quartzite countertops, Wolf appliances, a subzero refrigerator, and built-in bar. The expansive garage is designed as a private automotive gallery, meant to celebrate performance and craftsmanship, with plenty of space for up to 12 cars if a lift is added, and a landing on the second floor for viewing the cars below from inside the villa.

86804 Rogers Way isn’t just a home—it’s a front-row seat to adrenaline, wrapped in refined elegance and architectural mastery.

## BUILDING DETAILS

- **Building Size (Total):** 9,203\* SF (Includes Garage)
- **Living Area:** 4,964\* SF
- **Year Built:** 2023
- **Stories:** Three (3)
- **Garage Area:** 2,893\* SF
- **Garage Spaces:** Approximately 8 -12 cars\*
- **Rooms:** 4 bedrooms / 5.5 full baths
- **Elevator:** Yes
- **Solar:** Yes

## SITE DETAILS

- **Location:** 86804 Rogers Way, Thermal, CA 92274
- **APN:** 759-210-001
- **Parcel Size (According to County Assessor Information):** 0.17 AC (7,405 SF)
- **Showing:** Call To Make An Appointment
- **Comments:** Villa is offered fully furnished with the exception of certain pieces of art and owner’s personal items. Inquire with listing broker for a full list of excluded items. Vehicle in garage not included in sale.

SCAN OR CLICK THE QR CODE

### PROPERTY PHOTOS

Take a look at the property’s complete photo gallery.



**\*Disclaimer:** We cannot guarantee the accuracy or square footage, lot size or other information concerning the condition or features of property provided by the Seller or obtained from public records or other sources. The Buyer is advised to independently verify the accuracy of all information through personal and professional inspections.

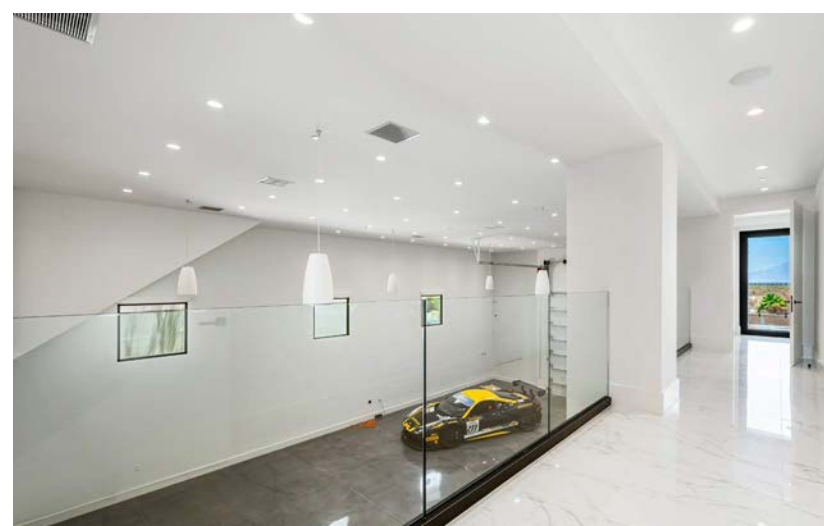
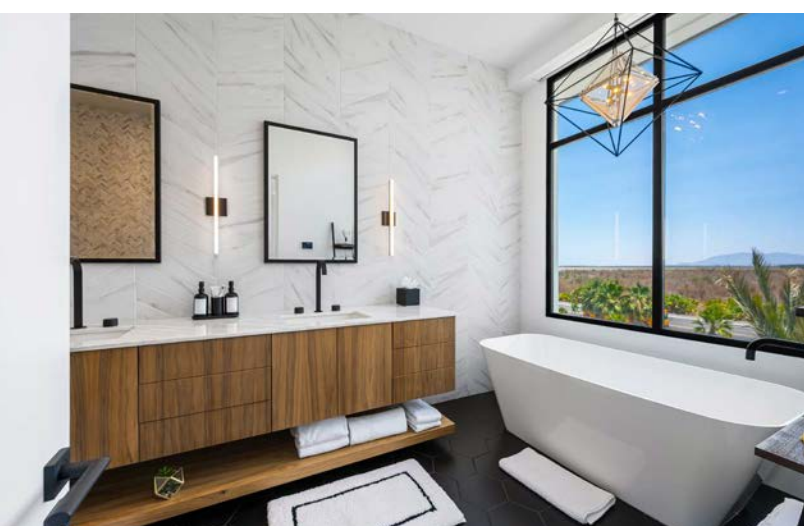
760.360.8200 | DesertPacificProperties.com | 44267 Monterey Ave, Ste. A, Palm Desert, CA 92260

Disclaimer: The information provided has been obtained from sources believed reliable. While we do not doubt its accuracy, we have not verified it and make no guarantee, warrant or representation about it. Buyer is strongly encouraged to independently confirm its accuracy and completeness. Any projections, opinions assumptions or estimates used are for example only, and may not accurately represent the current or future performance of the property.



760.360.8200 | [DesertPacificProperties.com](http://DesertPacificProperties.com) | 44267 Monterey Ave, Ste. A, Palm Desert, CA 92260

Disclaimer: The information provided has been obtained from sources believed reliable. While we do not doubt its accuracy, we have not verified it and make no guarantee, warrant or representation about it. Buyer is strongly encouraged to independently confirm its accuracy and completeness. Any projections, opinions, assumptions or estimates used are for example only, and may not accurately represent the current or future performance of the property.



760.360.8200 | [DesertPacificProperties.com](http://DesertPacificProperties.com) | 44267 Monterey Ave, Ste. A, Palm Desert, CA 92260

Disclaimer: The information provided has been obtained from sources believed reliable. While we do not doubt its accuracy, we have not verified it and make no guarantee, warrant or representation about it. Buyer is strongly encouraged to independently confirm its accuracy and completeness. Any projections, opinions assumptions or estimates used are for example only, and may not accurately represent the current or future performance of the property.



**86804 ROGERS WAY (VILLA #19), THERMAL, CA**



**Welcome to the Thermal Club, the World Class Motorsports heaven**

- **Thermal Club Amenities:** The Thermal Club Motorsports facility has 5 miles of private pavement and luxury amenities including two clubhouses, three restaurants, meeting and banquet building, full service spa, fitness center, a highly appointed 48-villa hotel, tennis, pickleball, kids club, karting, racing, driver training, storage and repair facilities.
- **Thermal Club Membership:** Purchasing a Villa/Lot requires a membership at the club. Standard family membership has a one-time initiation fee of \$400,000 plus membership dues of \$3,200/month and a small \$450/month ground maintenance fee per lot per month.

**760.360.8200 | DesertPacificProperties.com | 44267 Monterey Ave, Ste. A, Palm Desert, CA 92260**

Disclaimer: The information provided has been obtained from sources believed reliable. While we do not doubt its accuracy, we have not verified it and make no guarantee, warrant or representation about it. Buyer is strongly encouraged to independently confirm its accuracy and completeness. Any projections, opinions assumptions or estimates used are for example only, and may not accurately represent the current or future performance of the property.