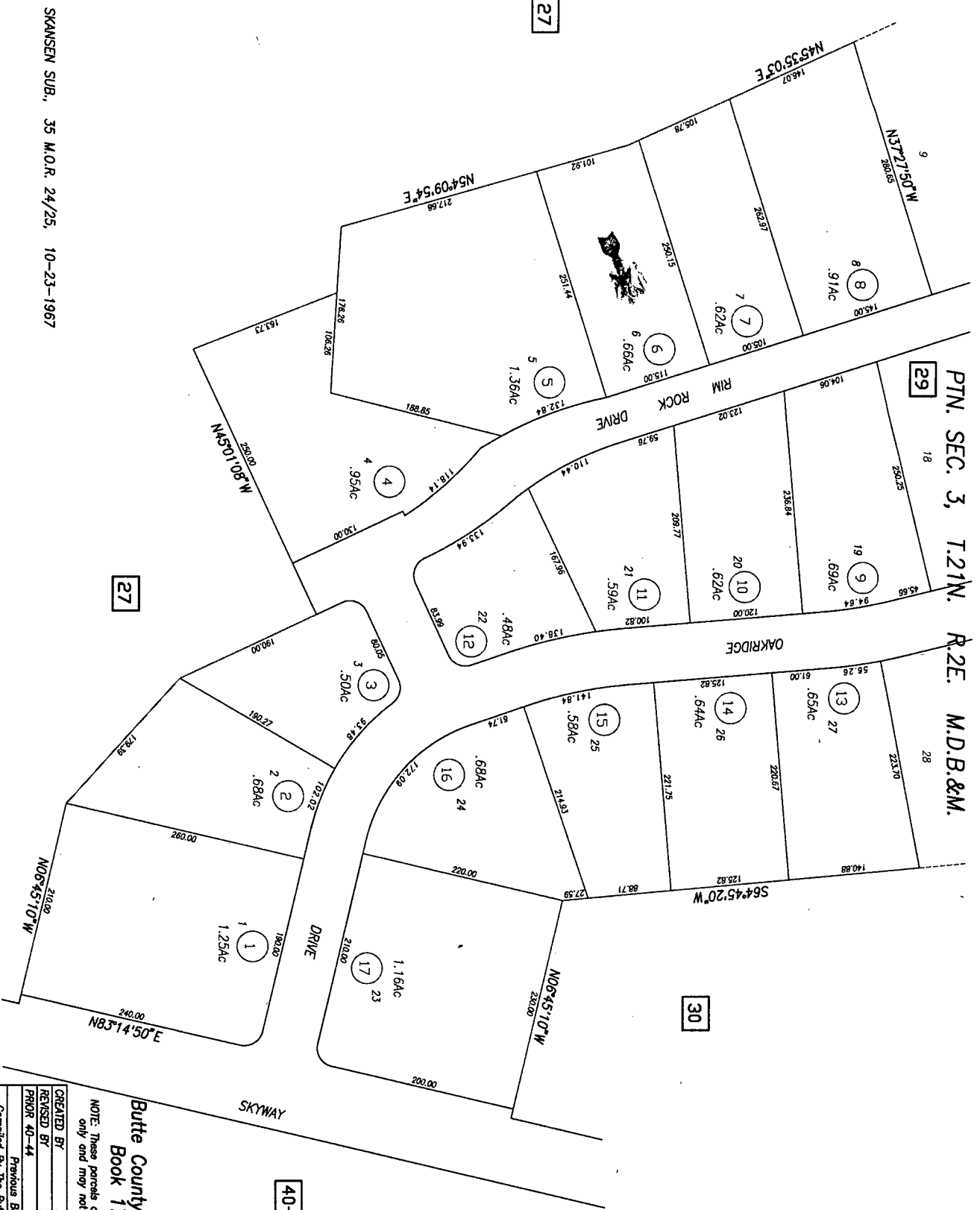




PTN. SEC. 3, T.21N. R.2E. M.D.B.&M.



SKANSEN SUB., 35 M.O.R. 24/25, 10-23-1967

CREATED BY	DBI	CREATED ON	11-1-2000
REVISED BY	DBI	REVISED ON	9-16-2003
PROJ	40-44	EFFECTIVE	2004-05 ROLL
Previous Book 11, Page 44			
Compiled by The Butte County Assessor's Office			

Butte County Assessor's Map  
Book 17, Page 28

NOTE: These parcels are for assessment purposes only and may not constitute legal parcels.

40-60

27

27

29

30

We, GILBERT ALM and ERIKA ALM, husband and wife, as owners of the land included within SKANSEN SUBDIVISION UNIT NO. ONE, as shown on the annexed map, do hereby certify that we are the only persons whose consent is necessary to pass clear title to said land, and we consent to the preparation and recording of said map as shown within the colored boundaries: RIM ROCK DRIVE, OAKRIDGE DRIVE and PARCEL A, as shown within the colored boundaries. We also offer for dedication for public use and do hereby dedicate for specific purposes, the following:

- (a) Rights of way and easements for water, gas, sewer, and drainage pipes, and for overhead and underground wires for electric and telephone service, together with any and all appurtenances appertaining thereto, on, over, and under those strips of land lying between the rear and/or side lines of lots and the lines designated "PUBLIC UTILITY EASEMENT LINE."
- (b) Easement for light and air over those strips of land lying between the front and/or side lines of lots and the lines shown hereon and designated "SETBACK LINE," said strips to be kept open and free of buildings.
- (c) Easement for guy wires and enclosures extending 20 feet from the center - lines of easements referred to in (a) above, and five feet in width, of the location shown hereon by symbols.

*Gilbert Alm*  
GILBERT ALM

*Erika Alm*  
ERIKA ALM

STATE OF CALIFORNIA )  
COUNTY OF BUTTE )

On this 21st day of December, 1966, before me Edward P. Woodell, a Notary Public in and for the County of Butte, personally appeared GILBERT ALM and ERIKA ALM, known to me to be the persons whose names are subscribed to the foregoing certificate and acknowledged to me that they executed the same.



*Edward P. Woodell*  
Notary Public  
My commission expires 12/31/68

I, F. H. SEELY, JR., Auditor of the County of Butte, State of California, do hereby certify that there are no tax liens against SKANSEN SUBDIVISION UNIT NO. ONE, as herein set forth, or unpaid State, County, Municipal, or Local taxes, or special assessments collected as taxes, except taxes of special assessment not yet payable. Taxes or assessments which are a lien but not yet payable, I estimate to be the amount of \$ 1,922.95.

*F. H. Seely, Jr.*  
F. H. SEELY, JR., County Auditor

I, WALTER B. GRIMES, do hereby certify that I am a Registered Civil Engineer of the State of California, that the annexed map of SKANSEN SUBDIVISION UNIT NO. ONE, correctly represents a survey made under my supervision in April, 1966, that it is true and complete as shown, that monuments shown thereon exist and are of the character and occupy the positions shown and are sufficient to enable the survey to be retraced.

*Walter B. Grimes*  
WALTER B. GRIMES  
Registered Civil Engineer No. 7294

I, W. F. CHAN, Director of Planning of the Planning Commission of the County of Butte, State of California, do hereby certify that the annexed final map of SKANSEN SUBDIVISION UNIT NO. ONE, conforms substantially with the subdivision design shown on the tentative map which was approved by this commission on June 22, 1967.

*W. F. Chan*  
W. F. CHAN  
Director of Planning

I, CLAYTON D. CASTLEBERRY, Director of Public Works of the County of Butte, State of California, do hereby certify that I have examined the final map of SKANSEN SUBDIVISION UNIT NO. ONE, that it is substantially the same as that shown on the Tentative Map on file and on my inspection, hereby offer all the provisions of the Subdivision Map Act of the State of California, and any local ordinances and rules of the County of Butte, and that the map have been complied with and I am satisfied that the map is technically correct.

*Clayton D. Castleberry*  
CLAYTON D. CASTLEBERRY, Director of Public Works, County of Butte  
Registered Civil Engineer No. 14224

I, do hereby certify that on the 15<sup>th</sup> day of Sept., 1967, the BUTTE COUNTY BOARD OF SUPERVISORS officially approved the subdivision map of SKANSEN SUBDIVISION UNIT NO. ONE. The receipt of satisfactory security in the Auditor's estimated amount of \$ 1,847.95, to insure payment of taxes which are a lien, but not yet payable, was acknowledged. RIM ROCK DRIVE, OAKRIDGE DRIVE and PARCEL A, as shown within the colored boundaries and offered for dedication for public use, were accepted on behalf of the Public for road purposes.

*Lessie Rogers*  
Lessie Rogers, by *Frances E. IT*  
County Clerk

Recorded in the office of the Recorder of Butte County, State of California, at the request of MID VALLEY TITLE CO. this 23<sup>rd</sup> day of Dec 1967, at 13 minutes past 10 o'clock P. M., in Map Book 45 of pages 27 and 25.

*Frank A. Nelson*  
FRANK A. NELSON  
COUNTY RECORDER

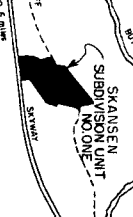
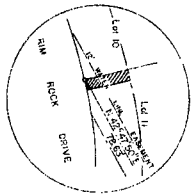
**SKANSEN  
SUBDIVISION  
UNIT NO. ONE**

BEING A PORTION OF SECTION 3, T. 21 N., R. 22 E., M.D.B.M.  
OWNER & SUBDIVIDER  
GILBERT ALM

WALTER B. GRIMES & ASSOC.  
CIVIL ENGINEERS & LAND SURVEYORS  
1338 MANGROVE AVE., CHICO, CALIFORNIA

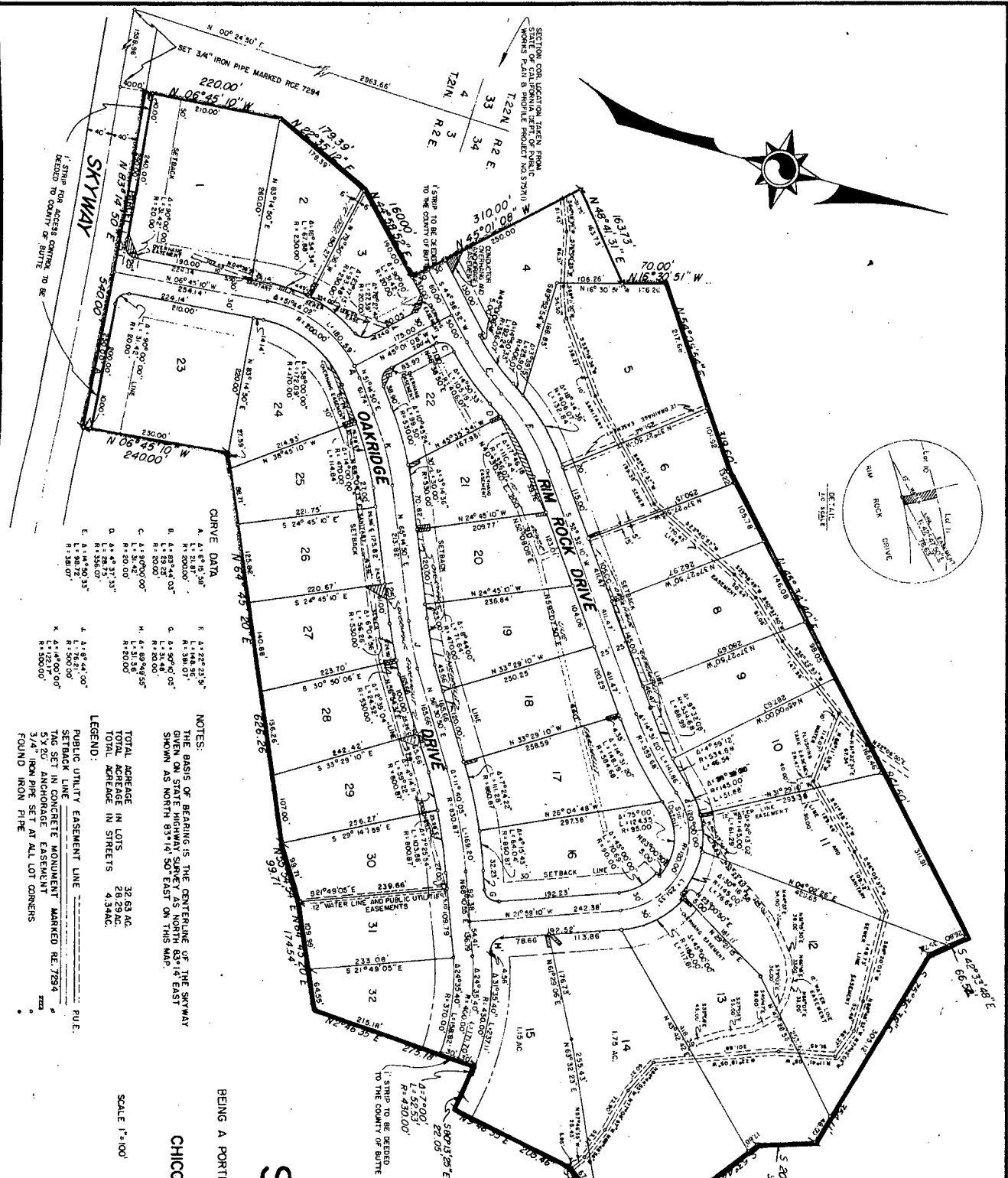
MAR 1967

35 214



LOCATION MAP

SECTION 3 T21N, R2E, M4889M.  
SCALE IN FEET  
0 1000 2000



# SKANSSEN SUBDIVISION

UNIT NO. ONE

BEING A PORTION OF SECTION 3, T21N, R2E, M.D.S. & M.

CHICO, BUTTE COUNTY, CALIFORNIA

OWNER: GILBERT ALM

WALTER B. GRIMES & ASSOC.  
CIVIL ENGINEERS & LAND SURVEYORS  
1338 MANHOVE AVE., CHICO CALIFORNIA

MAY 1967

CURVE DATA

A.	4.1° 58' 36"	F.	1.1° 22' 23"
B.	4.1° 58' 36"	G.	1.1° 22' 23"
C.	4.1° 58' 36"	H.	1.1° 22' 23"
D.	4.1° 58' 36"	I.	1.1° 22' 23"
E.	4.1° 58' 36"	J.	1.1° 22' 23"
F.	4.1° 58' 36"	K.	1.1° 22' 23"
G.	4.1° 58' 36"	L.	1.1° 22' 23"
H.	4.1° 58' 36"	M.	1.1° 22' 23"
I.	4.1° 58' 36"	N.	1.1° 22' 23"
J.	4.1° 58' 36"	O.	1.1° 22' 23"
K.	4.1° 58' 36"	P.	1.1° 22' 23"
L.	4.1° 58' 36"	Q.	1.1° 22' 23"
M.	4.1° 58' 36"	R.	1.1° 22' 23"
N.	4.1° 58' 36"	S.	1.1° 22' 23"
O.	4.1° 58' 36"	T.	1.1° 22' 23"
P.	4.1° 58' 36"	U.	1.1° 22' 23"
Q.	4.1° 58' 36"	V.	1.1° 22' 23"
R.	4.1° 58' 36"	W.	1.1° 22' 23"
S.	4.1° 58' 36"	X.	1.1° 22' 23"
T.	4.1° 58' 36"	Y.	1.1° 22' 23"
U.	4.1° 58' 36"	Z.	1.1° 22' 23"
V.	4.1° 58' 36"		
W.	4.1° 58' 36"		
X.	4.1° 58' 36"		
Y.	4.1° 58' 36"		
Z.	4.1° 58' 36"		

NOTES:  
THE BASIS OF BEARING IS THE CENTRALINE OF THE SKYWAY  
GIVEN ON STATE HIGHWAY SURVEY AS NORTH 83°14' EAST  
SHOWN AS NORTH 83°14' 50" EAST ON THIS MAP.

LEGEND:  
PUBLIC UTILITY EASEMENT LINE  
SETBACK LINE  
TAG SET IN CONCRETE MONUMENT MARKED RE 7294  
5' X 20' ANCHORAGE EASEMENT  
3/4" IRON PIPE SET AT ALL LOT CORNERS  
FOUND IRON PIPE

TOTAL ACRES IN LOTS 32.63 AC.  
TOTAL ACRES IN STREETS 4.33 AC.

SCALE 1" = 100'