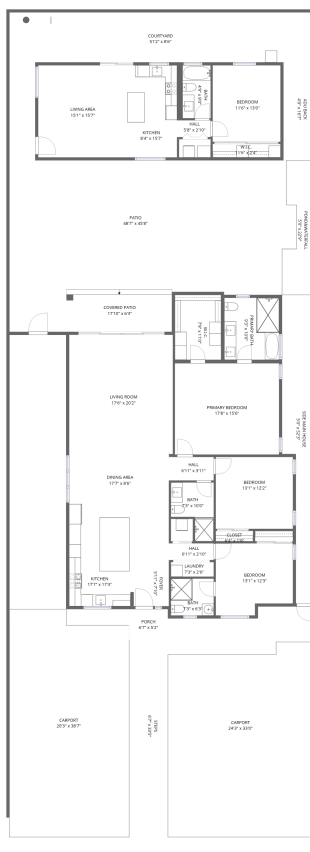


Home data report

14242 Hortense Street, Sherman Oaks, California 91423, United States



Total Area: 2468 sq. ft

1st Floor: 2468 sq. ft

Excluded: Patio 1202 sq. ft, Covered patio 113 sq. ft, Porch 34 sq. ft, Courtyard 433 sq. ft, Carport 1518 sq. ft, Steps 219 sq. ft, ADU back 79 sq. ft, Side main house 202 sq. ft, Walls: 282 sq. ft

Property summary

 **1** Floors

 **4** Bedrooms

 **4** Bathrooms

Scan captured on Sat, 28 Feb 2026 22:50:21 GMT

FLOOR PLAN CREATED BY CUBICASA APP. MEASUREMENTS DEEMED HIGHLY RELIABLE BUT NOT GUARANTEED.

Home data report

14242 Hortense Street, Sherman Oaks, California 91423, United States



Room dimensions

Floor 1

Total:2468sqft

Excluded: 3800sqft

#		Dimensions	sqft	Counted as living area
1	Side Main House	5'0" x 52'3"	262 sq. ft	No
2	Bath	7'3" x 6'3"	45 sq. ft	Yes
3	Bath	4'9" x 9'0"	43 sq. ft	Yes
4	ADU Back	4'9" x 16'7"	79 sq. ft	No
5	Bath	7'3" x 10'0"	72 sq. ft	Yes
6	Porch	6'7" x 5'2"	34 sq. ft	No
7	Kitchen	8'4" x 15'7"	130 sq. ft	Yes
8	Hall	6'11" x 2'10"	20 sq. ft	Yes
9	Courtyard	51'2" x 8'6"	433 sq. ft	No
10	Patio	48'7" x 45'8"	2218 sq. ft	No
11	Carport	20'3" x 38'7"	782 sq. ft	No

Scan captured on Sat, 28 Feb 2026 22:50:21 GMT

FLOOR PLAN CREATED BY CUBICASA APP. MEASUREMENTS DEEMED HIGHLY RELIABLE BUT NOT GUARANTEED.

Home data report

14242 Hortense Street, Sherman Oaks, California 91423, United States

#		Dimensions	sqft	Counted as living area
12	Kitchen	17'7" x 17'3"	303 sq. ft	Yes
13	Carport	24'3" x 33'0"	802 sq. ft	No
14	Living Area	15'1" x 15'7"	235 sq. ft	Yes
15	Hall	6'11" x 3'11"	27 sq. ft	Yes
16	W.I.C.	7'9" x 11'0"	85 sq. ft	Yes
17	Primary Bath	9'3" x 10'6"	97 sq. ft	Yes
18	Living Room	17'6" x 20'2"	354 sq. ft	Yes
19	Gate	9'7" x 46'6"	445 sq. ft	No
20	Laundry	7'3" x 2'6"	18 sq. ft	Yes
21	Pond&waterfall	5'0" x 22'9"	114 sq. ft	No
22	Steps	6'7" x 33'5"	219 sq. ft	No
23	W.I.C.	11'6" x 2'4"	26 sq. ft	Yes
24	Primary Bedroom	17'8" x 15'6"	273 sq. ft	Yes
25	Bedroom	13'1" x 12'3"	160 sq. ft	Yes
26	Covered Patio	17'10" x 6'3"	112 sq. ft	No
27	Hall	5'8" x 2'10"	16 sq. ft	Yes
28	Bedroom	11'6" x 13'0"	149 sq. ft	Yes
29	Dining Area	17'7" x 8'6"	149 sq. ft	Yes
30	Foyer	5'11" x 7'10"	47 sq. ft	Yes
31	Closet	6'4" x 1'9"	11 sq. ft	Yes
32	Bedroom	13'1" x 12'2"	159 sq. ft	Yes

1 Floor 1 - Side Main House



Dimensions: 5'0" x 52'3"
Area: 262 sq. ft
Counted as living area: No

Heated: No
Finished: No
Enclosed: No
Contiguous: Yes
Permitted: No
Wet space: No
Addition: No
Conversion: No

2 Floor 1 - Bath



Dimensions: 7'3" x 6'3"
Area: 45 sq. ft
Counted as living area: Yes

Heated: Yes
Finished: Yes
Enclosed: Yes
Contiguous: Yes
Permitted: Yes
Wet space: Yes
Addition: No
Conversion: No

3 Floor 1 - Bath



Dimensions: 4'9" x 9'0"
Area: 43 sq. ft
Counted as living area: Yes

Heated: Yes
Finished: Yes
Enclosed: Yes
Contiguous: Yes
Permitted: Yes
Wet space: Yes
Addition: No
Conversion: No

4 Floor 1 - ADU Back



Dimensions: 4'9" x 16'7"
Area: 79 sq. ft
Counted as living area: No

Heated: No
Finished: No
Enclosed: No
Contiguous: Yes
Permitted: No
Wet space: No
Addition: No
Conversion: No

5 Floor 1 - Bath



Dimensions: 7'3" x 10'0"
Area: 72 sq. ft
Counted as living area: Yes

Heated: Yes
Finished: Yes
Enclosed: Yes
Contiguous: Yes
Permitted: Yes
Wet space: Yes
Addition: No
Conversion: No

6 Floor 1 - Porch



Dimensions: 6'7" x 5'2"
Area: 34 sq. ft
Counted as living area: No

Heated: No
Finished: No
Enclosed: No
Contiguous: Yes
Permitted: Yes
Wet space: No
Addition: No
Conversion: No

7 Floor 1 - Kitchen



Dimensions: 8'4" x 15'7"
Area: 130 sq. ft
Counted as living area: Yes

Heated: Yes
Finished: Yes
Enclosed: Yes
Contiguous: Yes
Permitted: Yes
Wet space: No
Addition: No
Conversion: No

8 Floor 1 - Hall



Dimensions: 6'11" x 2'10"
Area: 20 sq. ft
Counted as living area: Yes

Heated: Yes
Finished: Yes
Enclosed: Yes
Contiguous: Yes
Permitted: Yes
Wet space: No
Addition: No
Conversion: No

9 Floor 1 - Courtyard



Dimensions: 51'2" x 8'6"
Area: 433 sq. ft
Counted as living area: No

Heated: No
Finished: No
Enclosed: No
Contiguous: Yes
Permitted: No
Wet space: No
Addition: No
Conversion: No

10 Floor 1 - Patio



Dimensions: 48'7" x 45'8"
Area: 2218 sq. ft
Counted as living area: No

Heated: No
Finished: No
Enclosed: No
Contiguous: Yes
Permitted: Yes
Wet space: No
Addition: No
Conversion: No

11 Floor 1 - Carport



Dimensions: 20'3" x 38'7"
Area: 782 sq. ft
Counted as living area: No

Heated: No
Finished: Yes
Enclosed: No
Contiguous: Yes
Permitted: Yes
Wet space: No
Addition: No
Conversion: No

12 Floor 1 - Kitchen



Dimensions: 17'7" x 17'3"
Area: 303 sq. ft
Counted as living area: Yes

Heated: Yes
Finished: Yes
Enclosed: Yes
Contiguous: Yes
Permitted: Yes
Wet space: No
Addition: No
Conversion: No

13 Floor 1 - Carport



Dimensions: 24'3" x 33'0"
Area: 802 sq. ft
Counted as living area: No

Heated: No
Finished: Yes
Enclosed: No
Contiguous: Yes
Permitted: Yes
Wet space: No
Addition: No
Conversion: No

14 Floor 1 - Living Area



Dimensions: 15'1" x 15'7"
Area: 235 sq. ft
Counted as living area: Yes

Heated: Yes
Finished: Yes
Enclosed: Yes
Contiguous: Yes
Permitted: Yes
Wet space: No
Addition: No
Conversion: No

15 Floor 1 - Hall



Dimensions: 6'11" x 3'11"
Area: 27 sq. ft
Counted as living area: Yes

Heated: Yes
Finished: Yes
Enclosed: Yes
Contiguous: Yes
Permitted: Yes
Wet space: No
Addition: No
Conversion: No

16 Floor 1 - W.I.C.



Dimensions: 7'9" x 11'0"
Area: 85 sq. ft
Counted as living area: Yes

Heated: Yes
Finished: Yes
Enclosed: Yes
Contiguous: Yes
Permitted: Yes
Wet space: No
Addition: No
Conversion: No

17 Floor 1 - Primary Bath



Dimensions: 9'3" x 10'6"
Area: 97 sq. ft
Counted as living area: Yes

Heated: Yes
Finished: Yes
Enclosed: Yes
Contiguous: Yes
Permitted: Yes
Wet space: Yes
Addition: No
Conversion: No

18 Floor 1 - Living Room



Dimensions: 17'6" x 20'2"
Area: 354 sq. ft
Counted as living area: Yes

Heated: Yes
Finished: Yes
Enclosed: Yes
Contiguous: Yes
Permitted: Yes
Wet space: No
Addition: No
Conversion: No

19 Floor 1 - Gate



Dimensions: 9'7" x 46'6"
Area: 445 sq. ft
Counted as living area: No

Heated: No
Finished: No
Enclosed: No
Contiguous: Yes
Permitted: Yes
Wet space: No
Addition: No
Conversion: No

20 Floor 1 - Laundry



Dimensions: 7'3" x 2'6"
Area: 18 sq. ft
Counted as living area: Yes

Heated: Yes
Finished: Yes
Enclosed: Yes
Contiguous: Yes
Permitted: Yes
Wet space: No
Addition: No
Conversion: No

21 Floor 1 - Pond&waterfall



Dimensions: 5'0" x 22'9"
Area: 114 sq. ft
Counted as living area: No

Heated: No
Finished: No
Enclosed: No
Contiguous: Yes
Permitted: No
Wet space: No
Addition: No
Conversion: No

22 Floor 1 - Steps



Dimensions: 6'7" x 33'5"
Area: 219 sq. ft
Counted as living area: No

Heated: No
Finished: No
Enclosed: No
Contiguous: Yes
Permitted: Yes
Wet space: No
Addition: No
Conversion: No

23 Floor 1 - W.I.C.



Dimensions: 11'6" x 2'4"
Area: 26 sq. ft
Counted as living area: Yes

Heated: Yes
Finished: Yes
Enclosed: Yes
Contiguous: Yes
Permitted: Yes
Wet space: No
Addition: No
Conversion: No

24 Floor 1 - Primary Bedroom



Dimensions: 17'8" x 15'6"
Area: 273 sq. ft
Counted as living area: Yes

Heated: Yes
Finished: Yes
Enclosed: Yes
Contiguous: Yes
Permitted: Yes
Wet space: No
Addition: No
Conversion: No

25 Floor 1 - Bedroom



Dimensions: 13'1" x 12'3"
Area: 160 sq. ft
Counted as living area: Yes

Heated: Yes
Finished: Yes
Enclosed: Yes
Contiguous: Yes
Permitted: Yes
Wet space: No
Addition: No
Conversion: No

26 Floor 1 - Covered Patio



Dimensions: 17'10" x 6'3"
Area: 112 sq. ft
Counted as living area: No

Heated: No
Finished: No
Enclosed: No
Contiguous: Yes
Permitted: Yes
Wet space: No
Addition: No
Conversion: No

27 Floor 1 - Hall



Dimensions: 5'8" x 2'10"
Area: 16 sq. ft
Counted as living area: Yes

Heated: Yes
Finished: Yes
Enclosed: Yes
Contiguous: Yes
Permitted: Yes
Wet space: No
Addition: No
Conversion: No

28 Floor 1 - Bedroom



Dimensions: 11'6" x 13'0"
Area: 149 sq. ft
Counted as living area: Yes

Heated: Yes
Finished: Yes
Enclosed: Yes
Contiguous: Yes
Permitted: Yes
Wet space: No
Addition: No
Conversion: No

29 Floor 1 - Dining Area



Dimensions: 17'7" x 8'6"
Area: 149 sq. ft
Counted as living area: Yes

Heated: Yes
Finished: Yes
Enclosed: Yes
Contiguous: Yes
Permitted: Yes
Wet space: No
Addition: No
Conversion: No

30 Floor 1 - Foyer



Dimensions: 5'11" x 7'10"
Area: 47 sq. ft
Counted as living area: Yes

Heated: Yes
Finished: Yes
Enclosed: Yes
Contiguous: Yes
Permitted: Yes
Wet space: No
Addition: No
Conversion: No

31 Floor 1 - Closet



Dimensions: 6'4" x 1'9"
Area: 11 sq. ft
Counted as living area: Yes

Heated: Yes
Finished: Yes
Enclosed: Yes
Contiguous: Yes
Permitted: Yes
Wet space: No
Addition: No
Conversion: No

32 Floor 1 - Bedroom



Dimensions: 13'1" x 12'2"
Area: 159 sq. ft
Counted as living area: Yes

Heated: Yes
Finished: Yes
Enclosed: Yes
Contiguous: Yes
Permitted: Yes
Wet space: No
Addition: No
Conversion: No