

TRUST SALE

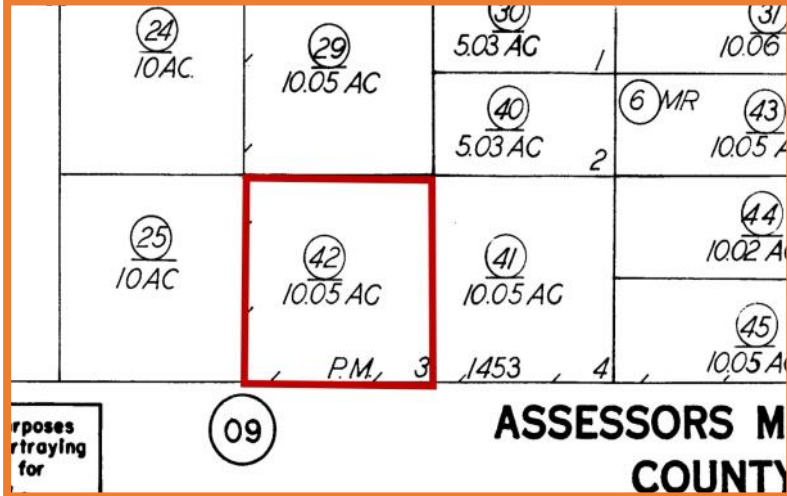
No Court Confirmation Required

MLS#: 26-655361 | APN: 302-392-42-00-1

10 AC Vacant Land in California City, Kern County



- For sale AFTER 50 years!
- Prime investment opportunity to own approx. 10.05 Acres/ 437,778 sq. ft. of residential/agricultural land in California City, Kern County, zoned O/RA.
- County has not assigned an official situs address. Parcel is identified by APN and GPS coordinates.
- Seller is a Court-Appointed Fiduciary and cannot make any representations as to the condition and history of the subject property.
- Sold AS IS WHERE IS, with all its faults, without warranty express or implied. Buyer to conduct their own investigations.



Please send your offer to sales@iagpm.com



Vineendra
 "Vinny" Jain
 President, Broker/Officer
 SALES@IAGPM.COM
 (310) 207-2288
 Cal DRE# 01413466

ASSETS SERVED
 SINGLE FAMILY HOMES * CONDOS
 APARTMENTS * RETAIL * OFFICE
 INDUSTRIAL

WWW.IAGPM.COM

If your property is currently listed with another broker, this is not intended as a solicitation. Broker/Agent does not guarantee accuracy of the square footage, lot size or other info concerning the condition or features of the property provided by the seller or obtained from public records or other sources. Buyer is advised to independently verify accuracy of all info through personal inspection and with the appropriate professionals. All prices advertised are the last asking price.