

A

B

C

D

E

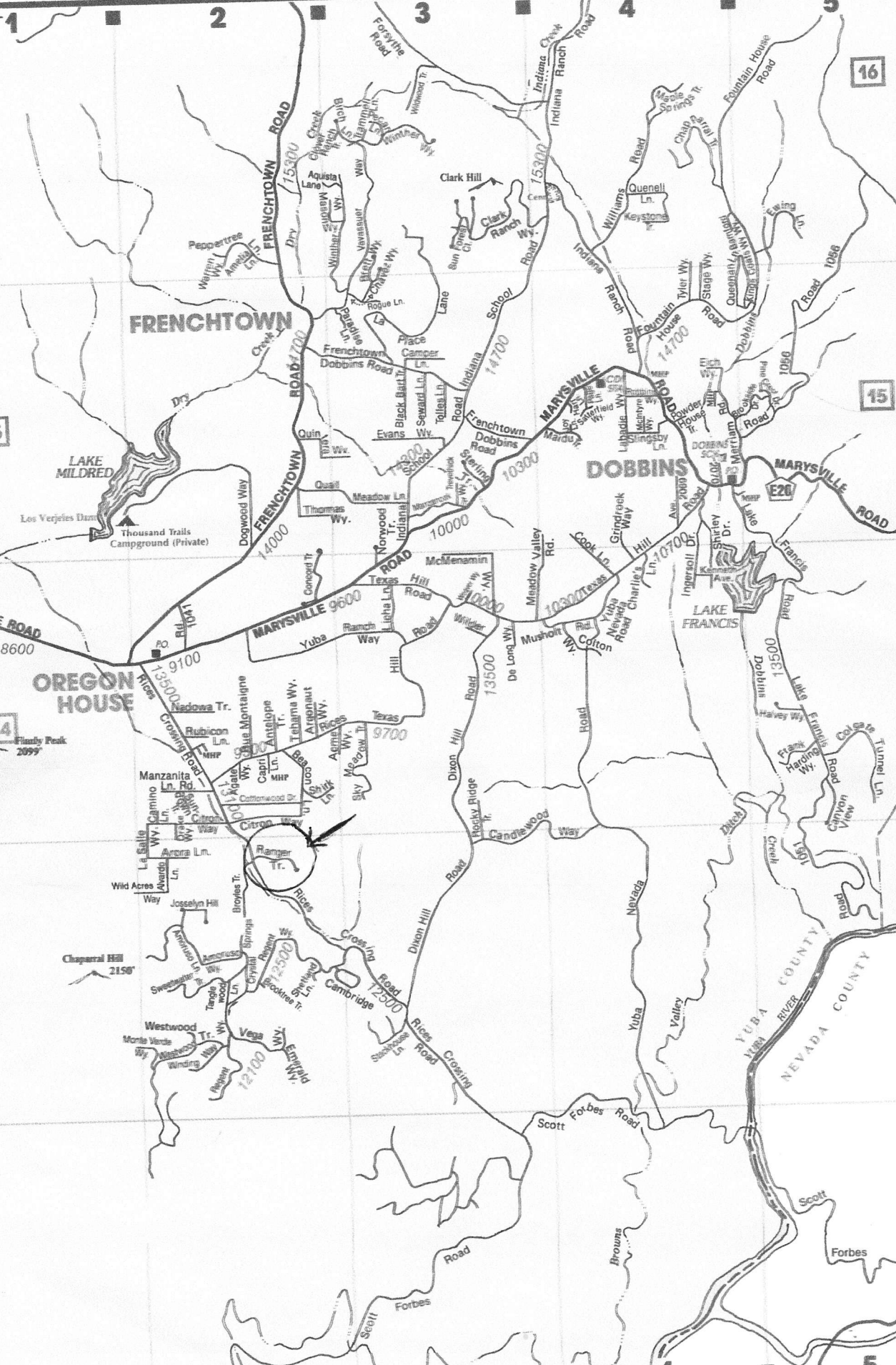
A

B

C

D

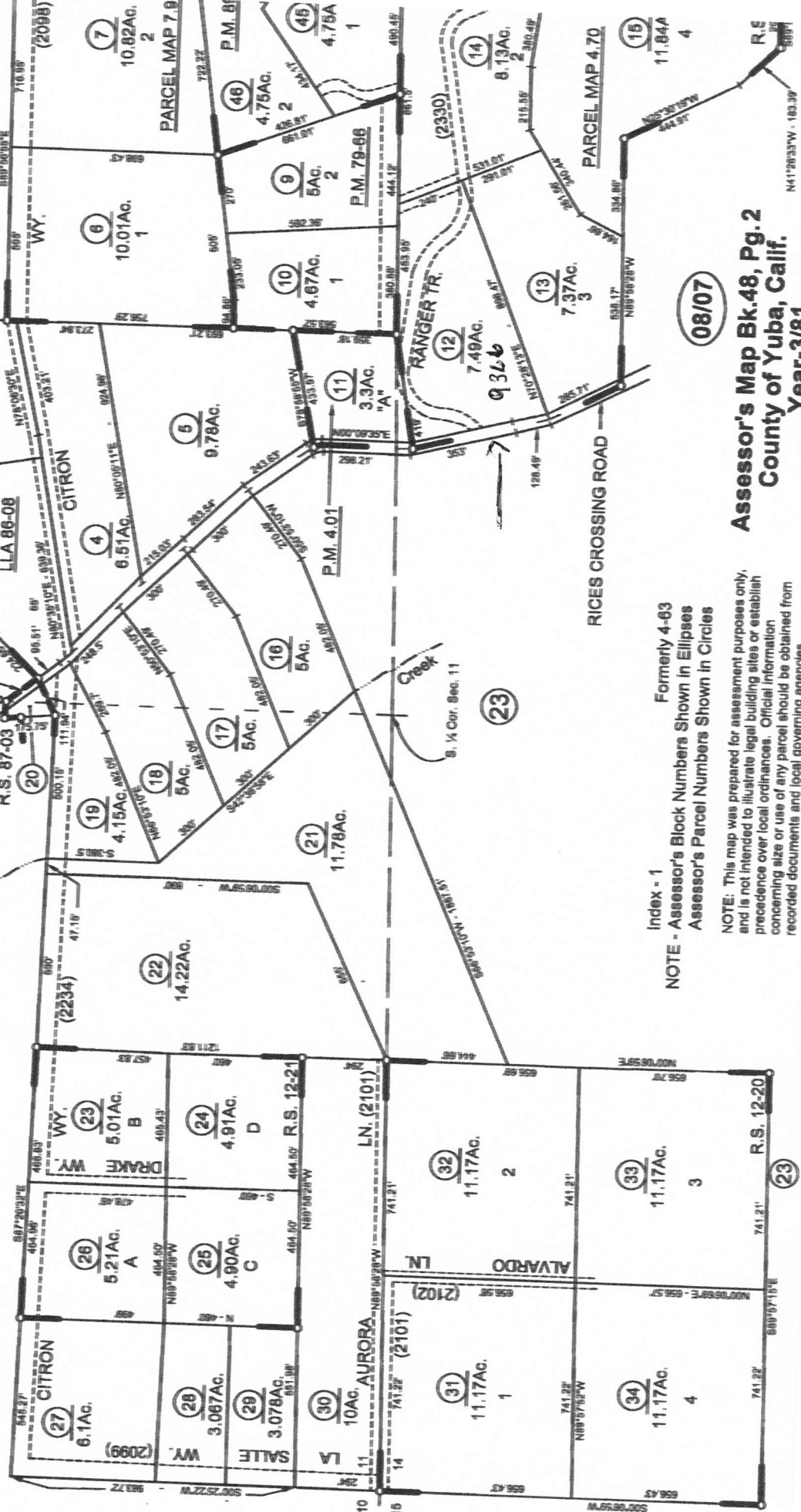
E



POR. SEC. 11 & 14, T.17N., R.6E., M. D. B. & M.

Tax Area Code
64-080

- R.S. - Bk. 87, Pg. 3 (R.O.S. 06-12)
- R.S. - Bk. 53, Pg. 22 (Parcel Map 89-65)
- R.S. - Bk. 45, Pgs. 28, 29 (Parcel Map 86-30)
- R.S. - Bk. 39, Pg. 20 (Parcel Map 79-114)
- R.S. - Bk. 31, Pg. 37 (Parcel Map 79-66, P-3, P.M. 7.93)
- R.S. - Bk. 25, Pg. 42 (Parcel Map 7.93) (L.L.A. 87-27)
- R.S. - Bk. 18, Pg. 33 (Parcel Map 4.70)
- R.S. - Bk. 17, Pg. 24 (Parcel Map 4.01)
- R.S. - Bk. 16, Pg. 17
- R.S. - Bk. 12, Pg. 20
- R.S. - Bk. 12, Pg. 21



Index - 1
 NOTE - Assessor's Block Numbers Shown in Ellipses
 Assessor's Parcel Numbers Shown in Circles

NOTE: This map was prepared for assessment purposes only, and is not intended to illustrate legal building sites or establish precedence over local ordinances. Official information concerning size or use of any parcel should be obtained from recorded documents and local governing agencies.

08/07