

INDUSTRIAL FLEX SPACE FOR LEASE WASHINGTON BUSINESS PARK

JUST LISTED!

77980 WILDCAT DRIVE, PALM DESERT CA 92211
WASHINGTON STREET EXIT, N. OF I-10

AVAILABLE FOR LEASE:

STE 1/2 - 2,173 SF - \$1.45 PSF MOD. GROSS

STE 4/5 - 2,614 SF - \$1.35 PSF MOD. GROSS

Rob Wenthold
(760) 641-7602
CalDRE #01153834

Marta Ward Blodgett
(310) 493-0580
CalDRE #01309501

©2023 Coldwell Banker. All Rights Reserved. Coldwell Banker Commercial® and the Coldwell Banker Commercial logos are trademarks of Coldwell Banker Real Estate LLC. The Coldwell Banker® System is comprised of company owned offices which are owned by a subsidiary of Anywhere Advisors LLC and franchised offices which are independently owned and operated. The Coldwell Banker System fully supports the principles of the Equal Opportunity Act.



**COLDWELL BANKER
COMMERCIAL**
LYLE & ASSOCIATES,
LP

SUMMARY

WASHINGTON BUSINESS PARK

77980 Wildcat Drive Palm Desert, CA 92211



OFFERING SUMMARY

Lease Rate:	\$1.35-1.45 SF/MO (MG)
Building Size:	5,460 SF
Available SF:	2,173 - 2,614 SF
Year Built:	2006
Zoning:	I-P Industrial Park
Market:	Inland Empire
Submarket:	Coachella Valley

PROPERTY OVERVIEW

Versatile Industrial Flex Spaces in Washington Business Park with excellent signage. Can be used for Office, Retail or Industrial. Close to 10 Fwy and Major Shopping/Retail centers, and Restaurants. North of 1-10 off Washington.

PROPERTY HIGHLIGHTS

- Ste 1/2 - 2,173 SF - \$1.45 PSF Modified Gross. Office with Reception Area, Staff Work Area with Built-Ins, Bullpen, Conference Room, Multiple Offices, Kitchen, and Warehouse with 2 Roll-up Doors.
- Ste 4/5 - 2,614 SF - \$1.35 PSF Modified Gross. Large Open Area/Showroom, and Lobby, Offices, and Storage. French doors to Warehouse with 2 Roll-up Doors, 2 Rear exit doors, and Ample Parking Front and Rear.
- Excellent Location off I-10 (Washington) and Close to Major Retail/Shopping Center & Restaurants.
- Zoned I-P (Industrial Park)
- Low-cost IID Power

Rob Wenthold
(760) 641-7602
CalDRE #01153834

Marta Ward Blodgett
(310) 493-0580
CalDRE #01309501



**COLDWELL BANKER
COMMERCIAL**
LYLE & ASSOCIATES,
LP

PHOTOS

WASHINGTON BUSINESS PARK

77980 Wildcat Drive Palm Desert, CA 92211



Ste 1/2 - Reception



Ste 1/2 - Conference Room



Ste 1/2 - Staff Work Area w/Built-ins



Ste 1/2 - 1st Executive Office

Rob Wenthold
(760) 641-7602
CalDRE #01153834

Marta Ward Blodgett
(310) 493-0580
CalDRE #01309501



**COLDWELL BANKER
COMMERCIAL**
LYLE & ASSOCIATES,
LP

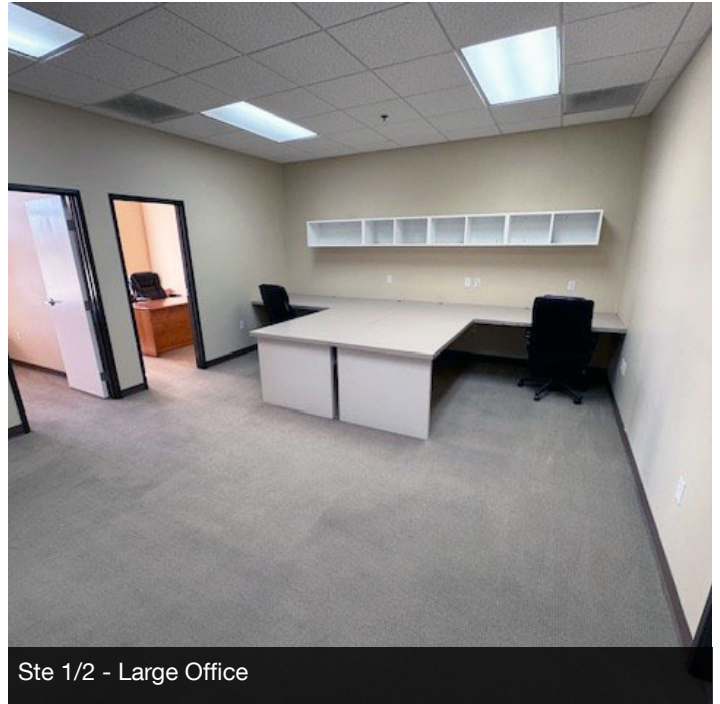
PHOTOS

WASHINGTON BUSINESS PARK

77980 Wildcat Drive Palm Desert, CA 92211



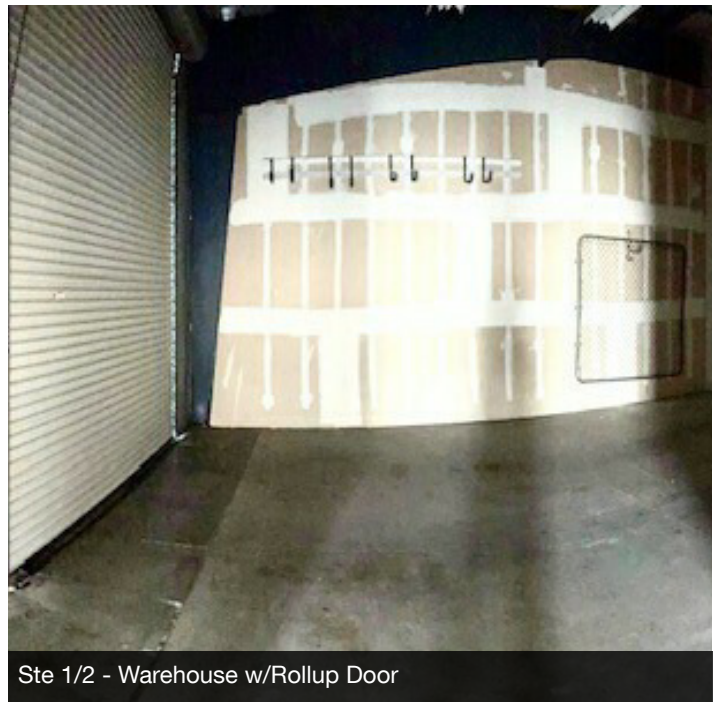
Ste 1/2 - 2nd Executive Office



Ste 1/2 - Large Office



Ste 1/2 - Kitchen



Ste 1/2 - Warehouse w/Rollup Door

Rob Wenthold
(760) 641-7602
CalDRE #01153834

Marta Ward Blodgett
(310) 493-0580
CalDRE #01309501



**COLDWELL BANKER
COMMERCIAL**
LYLE & ASSOCIATES,
LP

PHOTOS

WASHINGTON BUSINESS PARK

77980 Wildcat Drive Palm Desert, CA 92211



Ste 1/2 - Warehouse with Roll Up and Door



Ste 1/2 - Wall in 2nd Warehouse Section



Ste 1/2 - 2nd Warehouse section and 2nd Rollup Door



Ste 1/2 - Storage Area showing Gate

Rob Wenthold
(760) 641-7602
CalDRE #01153834

Marta Ward Blodgett
(310) 493-0580
CalDRE #01309501



**COLDWELL BANKER
COMMERCIAL**
LYLE & ASSOCIATES,
LP

PHOTOS

WASHINGTON BUSINESS PARK

77980 Wildcat Drive Palm Desert, CA 92211



Ste 4/5 - Front of Suite



Ste 4/5 - Area inside Entrance



Ste 4/5 - Entry with double doors to center section



Ste 4/5 - Middle Area with Restroom Access

Rob Wenthold
(760) 641-7602
CalDRE #01153834

Marta Ward Blodgett
(310) 493-0580
CalDRE #01309501

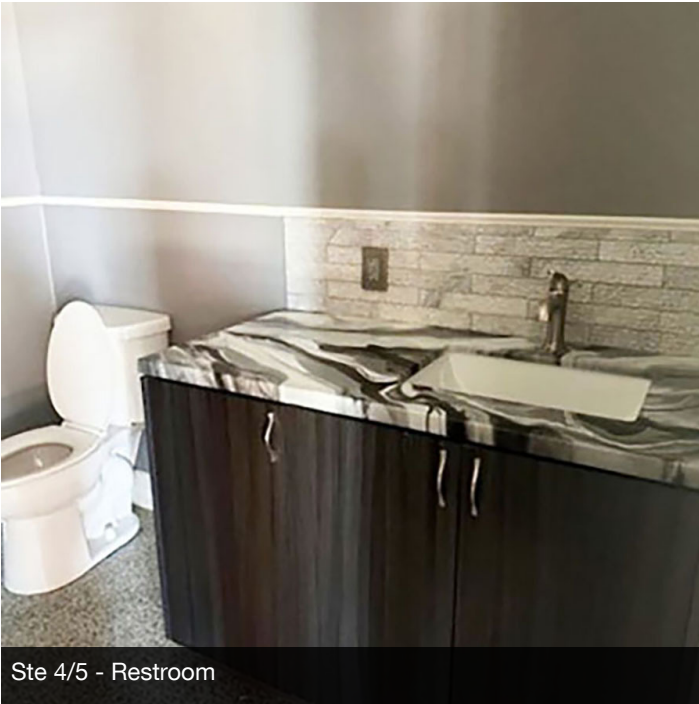


**COLDWELL BANKER
COMMERCIAL**
LYLE & ASSOCIATES,
LP

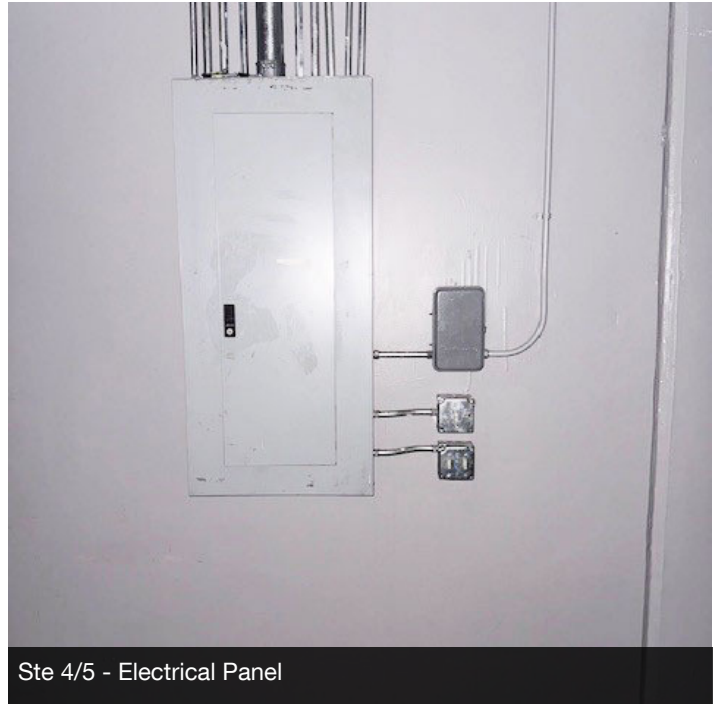
PHOTOS

WASHINGTON BUSINESS PARK

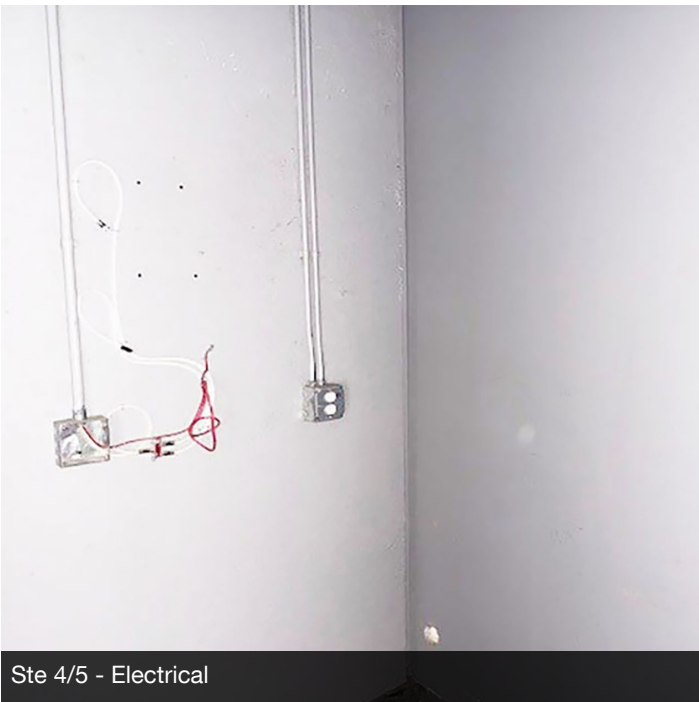
77980 Wildcat Drive Palm Desert, CA 92211



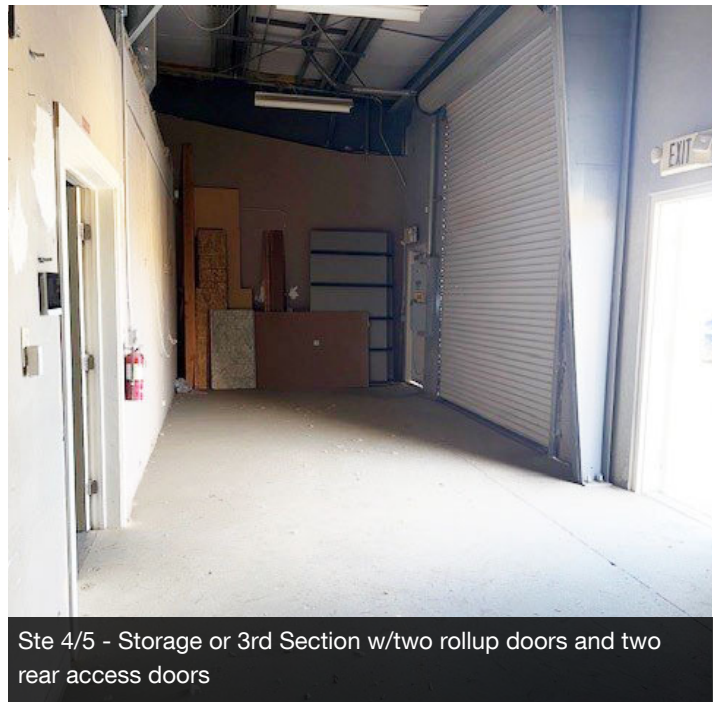
Ste 4/5 - Restroom



Ste 4/5 - Electrical Panel



Ste 4/5 - Electrical



Ste 4/5 - Storage or 3rd Section w/two rollup doors and two rear access doors

Rob Wenthold
(760) 641-7602
CalDRE #01153834

Marta Ward Blodgett
(310) 493-0580
CalDRE #01309501



**COLDWELL BANKER
COMMERCIAL**
LYLE & ASSOCIATES,
LP

PHOTOS

WASHINGTON BUSINESS PARK

77980 Wildcat Drive Palm Desert, CA 92211



Ste 4/5 - Storage or 3rd Section w/two rollup doors and two rear access doors



Ste 4/5 - Rear parking lot

Rob Wenthold
(760) 641-7602
CalDRE #01153834

Marta Ward Blodgett
(310) 493-0580
CalDRE #01309501



**COLDWELL BANKER
COMMERCIAL**
LYLE & ASSOCIATES,
LP

FLOORPLAN

WASHINGTON BUSINESS PARK

77980 Wildcat Drive Palm Desert, CA 92211



NOT TO SCALE, FOR DEMONSTRATION PURPOSES ONLY.

Rob Wenthold
(760) 641-7602
CalDRE #01153834

Marta Ward Blodgett
(310) 493-0580
CalDRE #01309501



COLDWELL BANKER
COMMERCIAL
LYLE & ASSOCIATES,
LP

RETAILER MAP

WASHINGTON BUSINESS PARK

77980 Wildcat Drive Palm Desert, CA 92211



Rob Wenthold
(760) 641-7602
CalDRE #01153834

Marta Ward Blodgett
(310) 493-0580
CalDRE #01309501

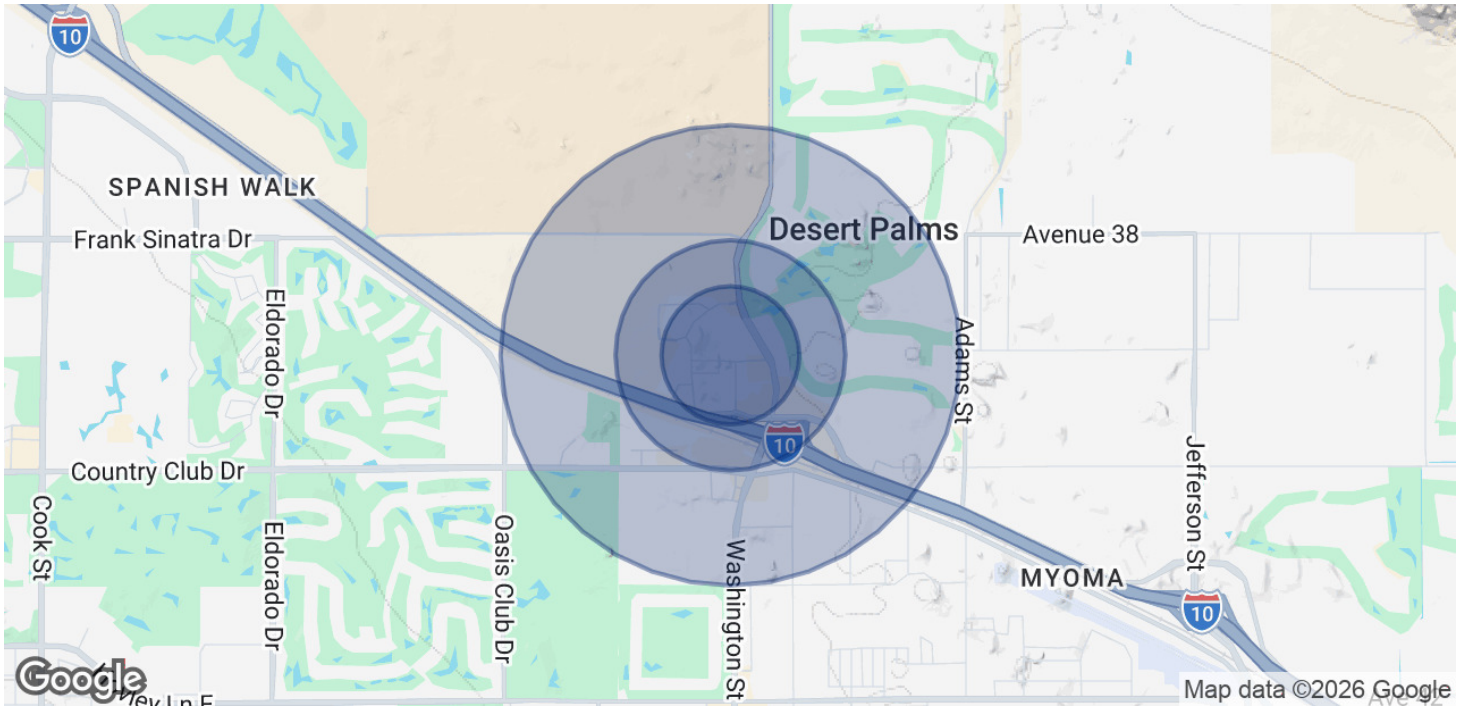


**COLDWELL BANKER
COMMERCIAL**
LYLE & ASSOCIATES,
LP

DEMOGRAPHICS

WASHINGTON BUSINESS PARK

77980 Wildcat Drive Palm Desert, CA 92211



POPULATION	0.3 MILES	0.5 MILES	1 MILE
Total Population	43	684	6,186
Average Age	71	75	56
Average Age (Male)	71	75	55
Average Age (Female)	71	75	57
HOUSEHOLDS & INCOME	0.3 MILES	0.5 MILES	1 MILE
Total Households	26	422	3,157
# of Persons per HH	1.7	1.6	2
Average HH Income	\$93,939	\$94,414	\$103,137
Average House Value	\$476,509	\$596,422	\$663,837

Demographics data derived from AlphaMap

Rob Wenthold
 (760) 641-7602
 CalDRE #01153834

Marta Ward Blodgett
 (310) 493-0580
 CalDRE #01309501



**COLDWELL BANKER
 COMMERCIAL**
 LYLE & ASSOCIATES,
 LP

CONTACT

WASHINGTON BUSINESS PARK

77980 Wildcat Drive Palm Desert, CA 92211



ROB WENTHOLD

Senior Vice President

Direct: (760) 641-7602

Cell: (760) 641-7602

rwenthold@dc.rr.com

CalDRE #01153834



MARTA WARD BLODGETT

Executive Vice President

Direct: (310) 493-0580

Cell: (310) 493-0580

mward@cbclyle.net

CalDRE #01309501

Rob Wenthold
(760) 641-7602
CalDRE #01153834

Marta Ward Blodgett
(310) 493-0580
CalDRE #01309501



**COLDWELL BANKER
COMMERCIAL**
LYLE & ASSOCIATES,
LP