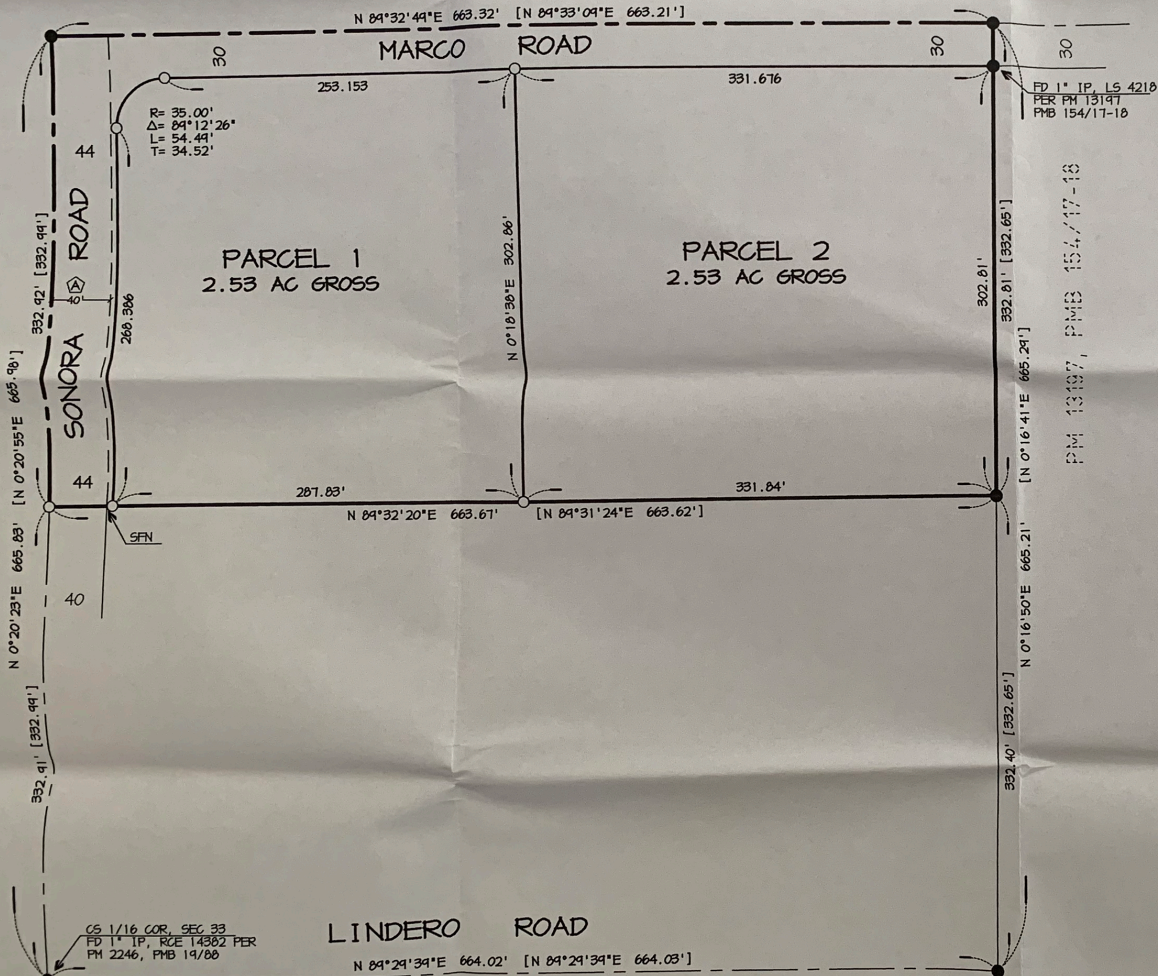


# PARCEL MAP NO. 17400

BEING A SUBDIVISION OF PARCEL 1 OF PARCEL MAP  
 NO. 2246, PARCEL MAP BOOK 19, PAGE 88,  
 RECORDS OF SAN BERNARDINO COUNTY, CALIFORNIA  
 (IN THE NW 1/4 OF THE SE 1/4 OF SEC 33, T5N, R6W, SBM)  
 CUBIT ENGINEERING, INC  
 JANUARY, 2007



## MAP NOTES

BASIS OF BEARINGS: BEING THE CENTER LINE OF LINDERO ROAD OF THE NW 1/4 OF SECTION 25, T5N, R3W, SBM, PER PER PM 2246, PMB 19/88, BEING N 89°29'39"E.

- INDICATES SET 1" IP, 18" LONG, TAGGED RCE 23227. UNLESS OTHERWISE NOTED.
- INDICATES FOUND 1" IP, RCE 14382 PER PM 2246, PMB 19/88 UNLESS OTHERWISE NOTED.
- [xxx] INDICATES RECORD PER PM 2246, PMB 19/88
- SFN INDICATES SEARCHED, FOUND NOTHING



SCALE  
 1" = 60'

## EASEMENTS

- Ⓐ AN OFFER OF DEDICATION IN FAVOR OF THE COUNTY OF SAN BERNARDINO FOR HIGHWAY AND ROAD PURPOSES PER DOCUMENT RECORDED SEPTEMBER 18, 1974, IN BOOK 8518, PAGE 842, O.R.

## COMPOSITE DEVELOPMENT PLAN NOTE

A COMPOSITE DEVELOPMENT PLAN (C.D.P.) AFFECTING THIS MAP IS ON FILE IN THE COUNTY OF SAN BERNARDINO OFFICE OF BUILDING AND SAFETY.