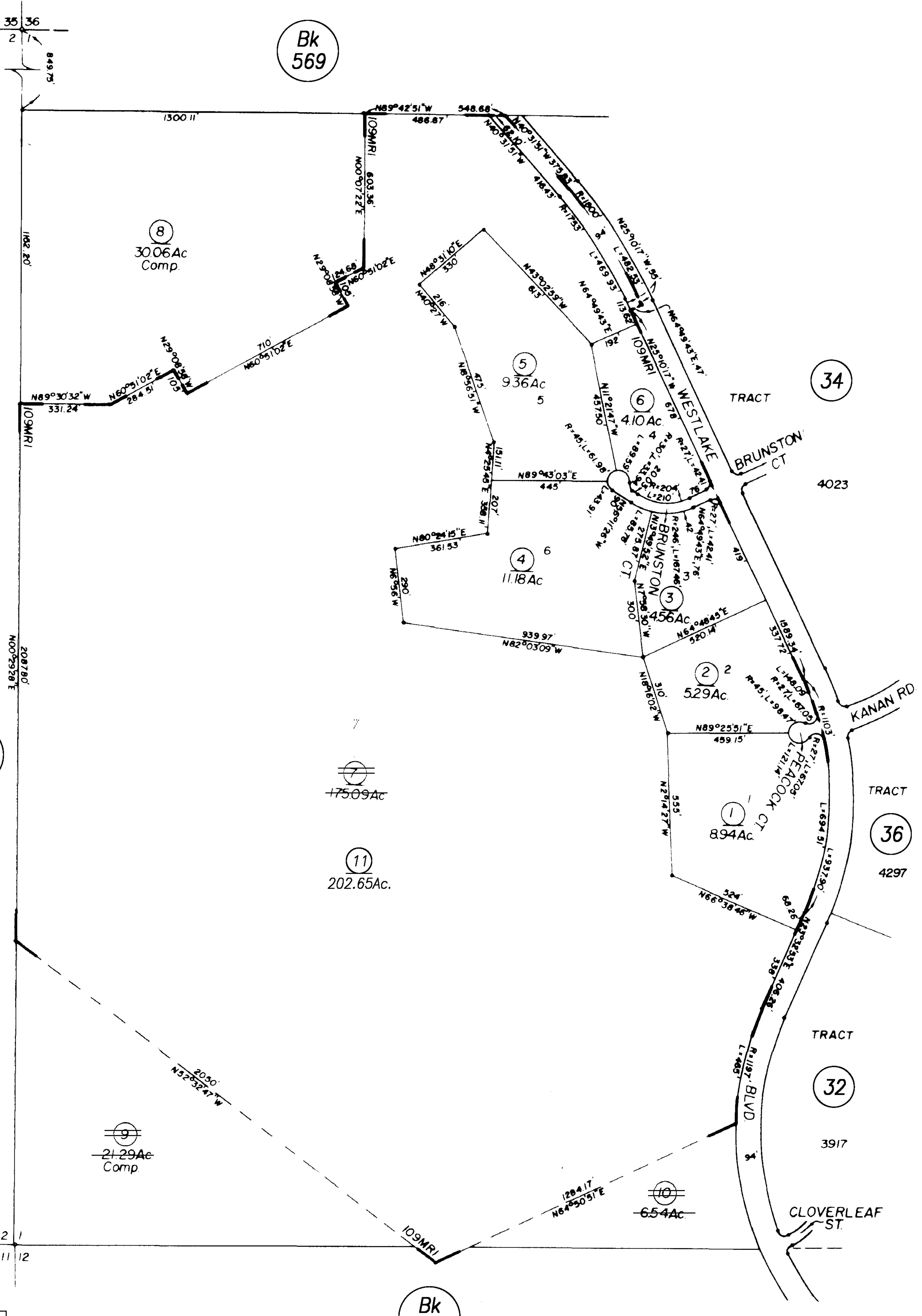
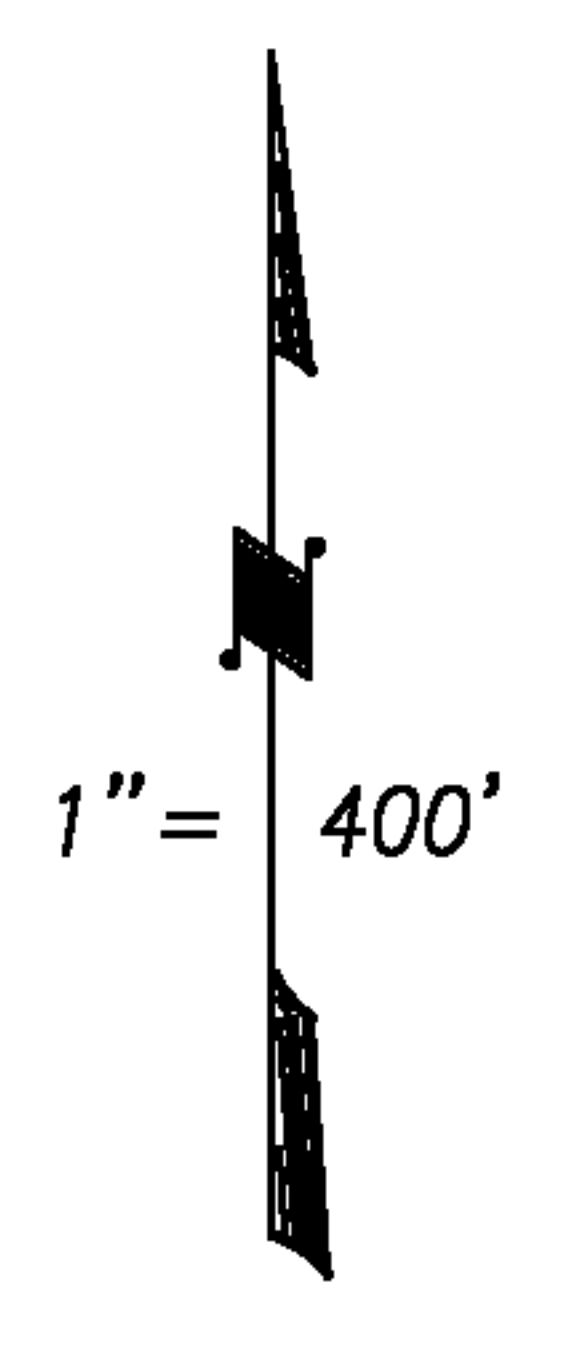


RANCHO EL CONEJO  
PORTION SECTIONS 1 & 12, T.1N., R.19W.

Tax Rate Area  
08107

690-35



Tract 4022, M.R Bk.109, Pg.1  
Rancho El Conejo Partition, Dds. Bk.1, Page 746

NOTE: ASSESSOR PARCELS SHOWN ON THIS PAGE  
DO NOT NECESSARILY CONSTITUTE LEGAL LOTS.  
CHECK WITH COUNTY SURVEYOR'S OFFICE OR  
PLANNING DIVISION TO VERIFY.

DRAWN	B.W.   REVISED	4-9-2003
REDRAWN	CREATED	2-24-1987
INKED	PLOTTED   EFFECTIVE	8788 ROLL
PREVIOUS Bk.680, Portion Pg.03		
Compiled By Ventura County Assessor's Office		

CITY OF THOUSAND OAKS  
Ventura County Assessor's Map.

Assessor's Block Numbers Shown in Ellipses.  
Assessor's Parcel Numbers Shown in Circles.  
Assessor's Mineral Numbers Shown in Squares.

Roll-Year 03-04		BK. 690 , PG. 35 REVISION LOG			
DATE	REFERENCE DOC.	EXPLANATION		VOID A.P.N.(s)	RESIDUAL A.P.N.(s)
		Code	Description		
04/09/03		COMBINATION	PER ASSESSEE REQUEST	690-0-350-075,095,105	690-0-350-115