

Toll Brothers
AMERICA'S LUXURY HOME BUILDER®



VINOVA - OVERLOOK COLLECTION

Elysian Modern Farmhouse

HOME SITE 54 | 5512 BARRIER ISLAND PL | RANCHO CUCAMONGA, 91739

Designer Appointed Features | EXTERIOR SELECTIONS

Designer Appointed Features are home details and finishes curated by the talented design professionals responsible for the distinctive looks found in our model homes.



- | | | | | | | | | |
|---|---|---------------------------|---|---|------------------------|---|--|--|
| 1 |  | BOARD & BATTEN | 3 |  | FRONT DOOR | 5 |  | STONE |
| | | Anonymous
SW 7046 | | | Black Fox
SW 7020 | | | Oak - 3" Split
Coronado Stone |
| 2 |  | STUCCO & TRIM | 4 |  | GARAGE DOOR | 6 |  | ROOF |
| | | Shoji White
SW 7042 | | | Shoji White
SW 7042 | | | Seattle Blend - Bel Air
Eagle Roofing |

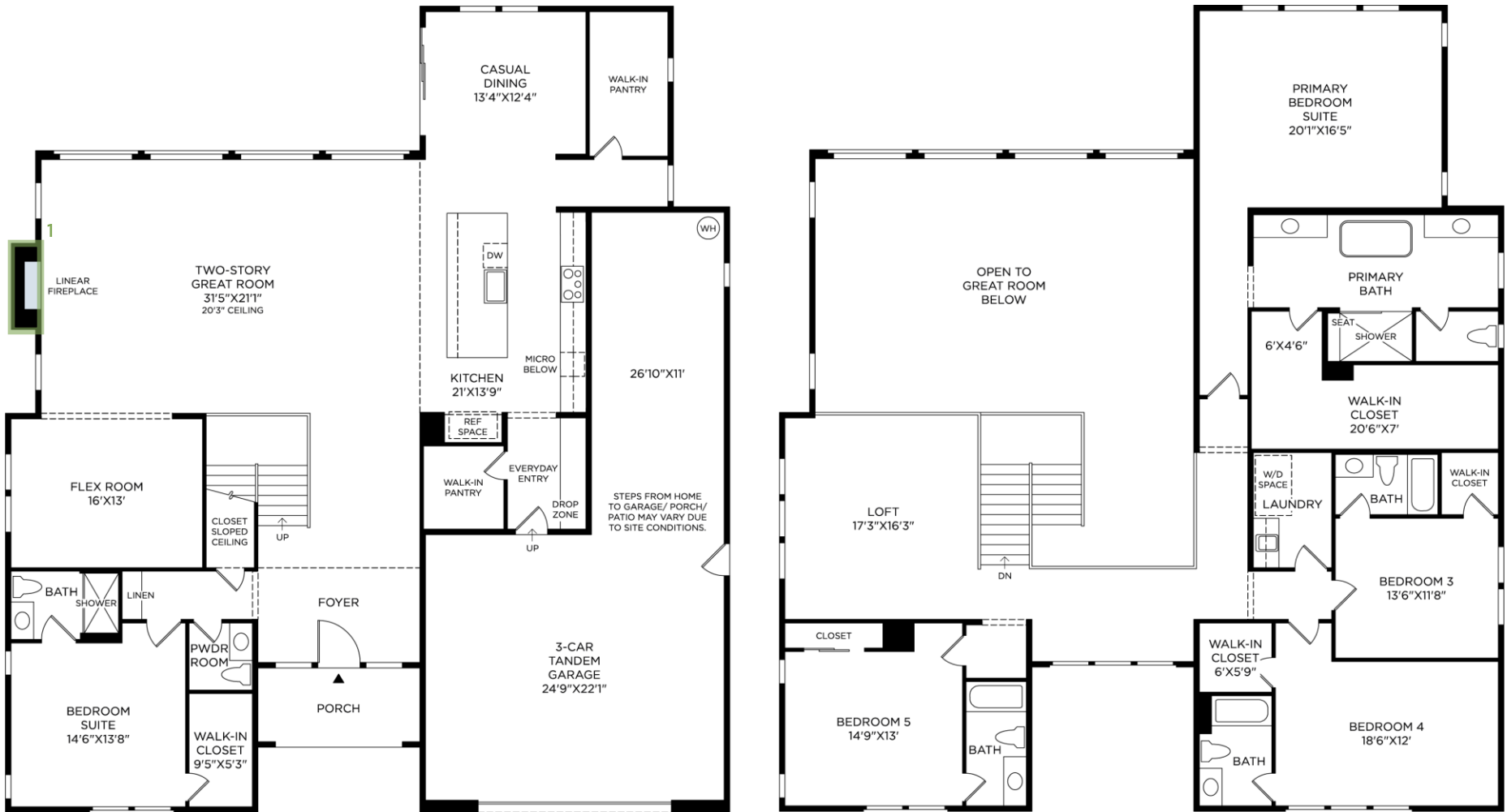
VINOVA | OVERLOOK COLLECTION | ELYSIAN MODERN FARMHOUSE
HOME SITE 54 | 5512 BARRIER ISLAND PL | RANCHO CUCAMONGA, 91739

Prices and offers subject to change without notice. Products are subject to change without notice based on field conditions or other unforeseen circumstances. To the extent any features or options on this Designer Appointed Features (DAF) presentation conflict with the features or options on the Initial Home Change Order, the Initial Home Change Order shall control. This is not an offering where prohibited by law. Images are for representational purposes only and actual product may differ. Not all images may be shown. See online or onsite sales consultants for details.



Designer Appointed Features | STRUCTURAL OPTIONS

Designer Appointed Features are home details and finishes curated by the talented design professionals responsible for the distinctive looks found in our model homes.



1 LINEAR FIREPLACE 48" PRIMO II